

Disability and Health profile for Somerset

Introduction

The majority of Somerset residents are disability-free and are in good health. However, there are significant numbers of residents whose day-to-day activities are limited because of a long-term health problem or disability.

This document provides an overview of self-reported disability and health in Somerset, based on the results of two questions asked within the 2011 Census:

- *Are your day-to-day activities limited because of a health problem or disability which has lasted, or is expected to last, at least 12 months?*
(Options were: 'Yes, limited a little', 'Yes, limited a lot', 'No')
- *How is your health in general?*
(Options were: 'Very good', 'Good', 'Fair', 'Bad', 'Very Bad')

The profiles give a snapshot of Somerset's population as of Census Day, 28 March 2011.

For further information, please contact Toby Atkins, Information Analyst, TXAtkins@somerset.gov.uk.

More detailed analysis of health and disability in Somerset is available at: www.somersetintelligence.org.uk/census-health.html

Disability and Health Profile

Residents with a long-term health problem or disability

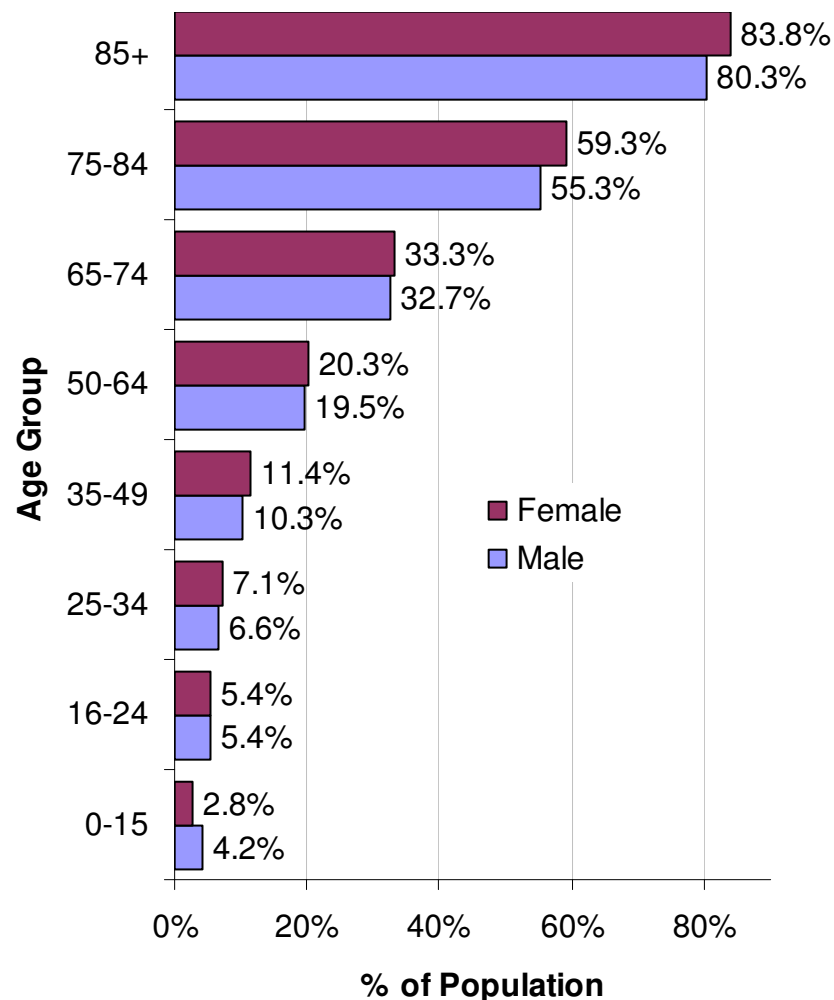
Summary

- At the time of the 2011 Census, 99,664 people in Somerset identified themselves as having a long-term health problem or disability which limited their day-to-day activity. This equates to around 1 in 5 of the population.
- 43,988 people's lives were limited 'a lot' and 55,676 people limited 'a little'.
- A higher proportion of women than men report having a long term health problem or disability.
- Overall, over half of people aged 65 or over in Somerset have a long-term health problem or disability, rising to 83% of those aged 85 or over.
- Prevalence is most common in areas with older populations: in parts of Minehead and Burnham-on-Sea around 1 in 3 residents have a limiting condition.

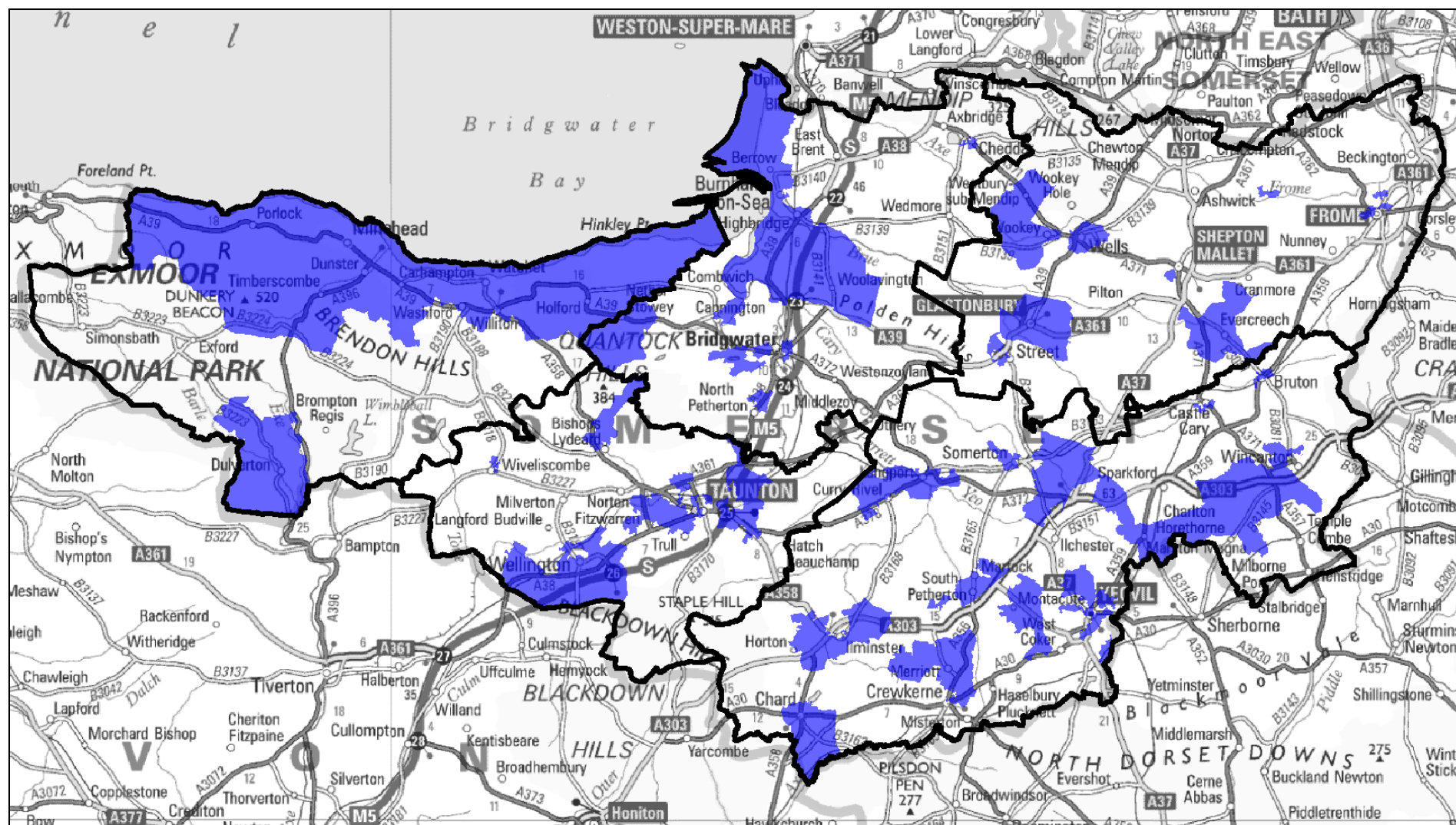
Areas with highest concentrations of people with a long term health problem or disability

LSOA description	Number of residents	% of local population
Minehead West	471	32.3%
Burnham North Central	496	32.3%
Burnham South Central	509	32.2%
Burnham Esplanade North	489	31.0%
Taunton Lyngford East	385	30.3%
Burnham Esplanade South	478	29.8%
Highbridge North East	555	29.7%
Bridgwater Hamp West	399	29.6%
Glastonbury Central	415	29.4%
Minehead North	579	28.6%

Proportion of population with a long term health problem or disability



Map showing areas with above average concentrations of residents whose day-to-day activity is limited because of a long-term health problem or disability (relative to the Somerset average)



© Crown Copyright. All rights reserved. 100038382. Somerset County Council (2013)

- Areas coloured blue are LSOAs in which more than 18.8% of the local population have a long term health problem or disability

Disability and Health Profile

Residents in 'bad' or 'very bad' health

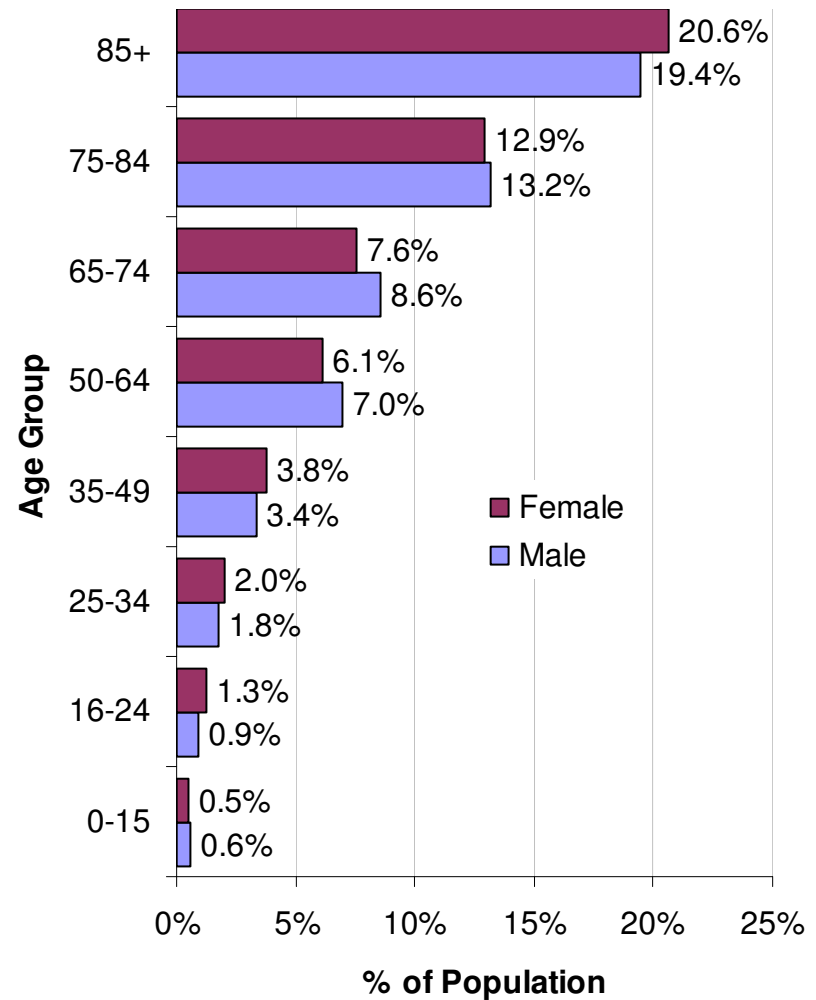
Summary

- At the time of the 2011 Census, 25,088 Somerset residents rated their health as 'bad' or 'very bad', representing around 1 in 20 of the overall population.
- Around 1 in 9 residents aged 65 or over were in bad (or very bad) health, rising to 1 in 5 of those aged 85 or over.
- A higher proportion of women than men are in bad health, although in the 50-84 age groups the situation is reversed.
- Poor health is most prevalent in areas with older populations and in areas of multiple deprivation.
- In parts of Highbridge, Taunton and Bridgwater more than 1 in 10 residents are in bad health.

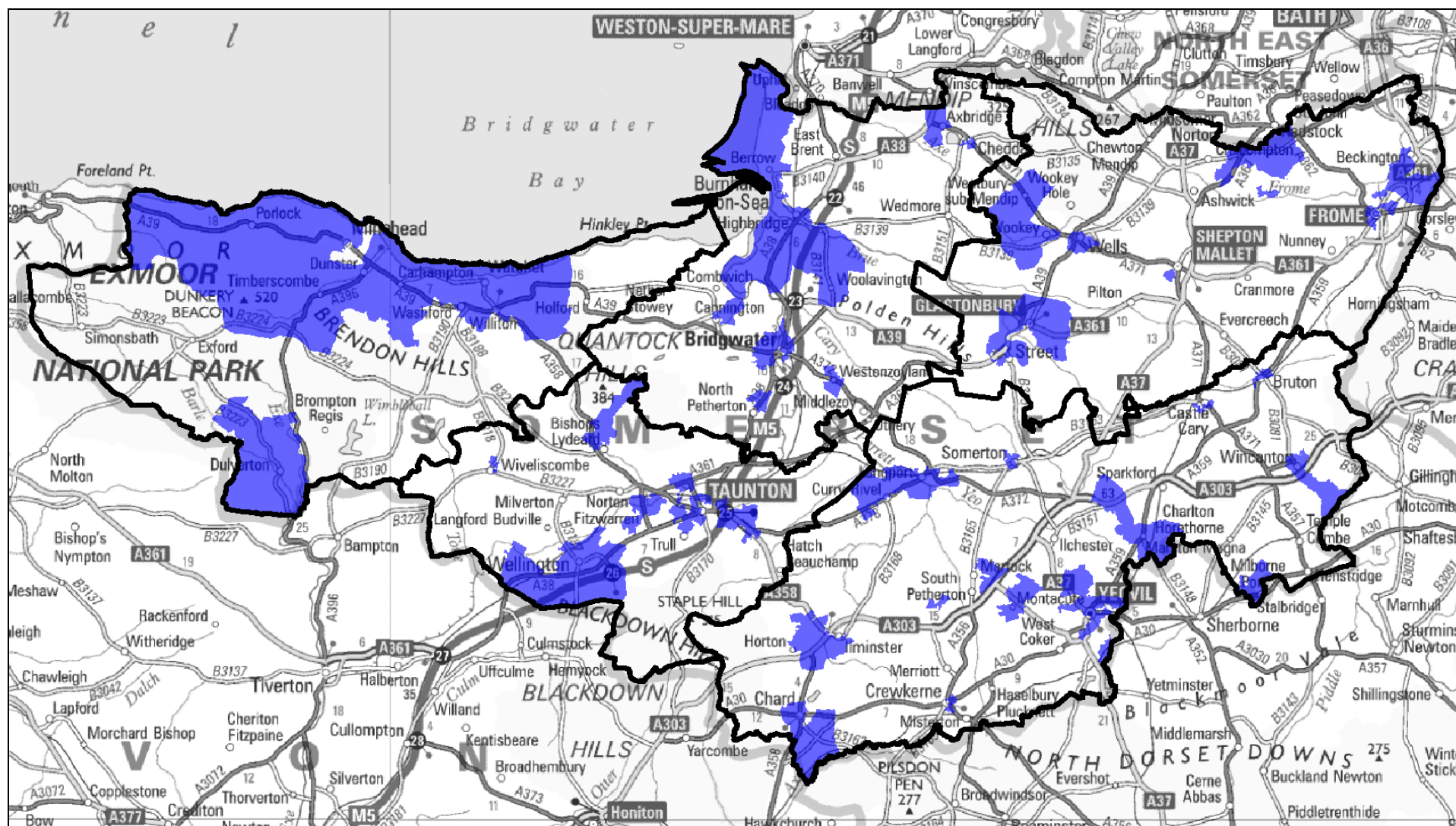
Areas with highest concentrations of residents in bad (or very bad) health

LSOA description	Number of residents	% of local population
Highbridge South West	197	13.4%
Taunton Lambrook	155	10.8%
Bridgwater Hamp West	142	10.5%
Taunton Lyngford East	132	10.4%
Bridgwater West Street	149	10.0%
Highbridge North East	180	9.6%
Frome Trinity, Cork Street and Nunney Road	144	9.3%
Glastonbury Central	128	9.1%
Watchet South	134	8.9%
Burnham South Central	141	8.9%

Proportion of population in 'bad' or 'very bad' health



Map showing areas with above average concentrations of residents in bad (or very bad) health
(relative to the Somerset average)



© Crown Copyright. All rights reserved. 100038382. Somerset County Council (2013)

- Areas coloured blue are LSOAs (Lower-layer Super Output Areas) where more than 5.1% of the local population are in bad health