

Section II: Report and Analysis by GP Federation

6. South Somerset Healthcare

Pharmacies and Dispensing Practices

The pharmacies and dispensing practices in South Somerset Healthcare are shown in the tables below:

Table II.6.1 Pharmacies in South Somerset Healthcare

Contract code	Contract Name	Trading Name	Address1	Address2	Address3	Postcode	Type	Enhanced Services		Advanced Services			Locally Commissioned Services					
								Minor Ailments	Specialist (Palliative Care) Drugs	Medicines Use Reviews	New Medicines Service	Appliance Use Reviews	Stoma Customisation	Supervised administration of medicine	Emergency Hormonal Contraception	Chlamydia Screening Bins	Stop Smoking Service	Needle exchange
FVK07	Bruton Pharmacy Ltd	Bruton Pharmacy	High Street		Bruton	BA10 0AB	40 hr	Y		Y	Y			y	y	y	y	y
FTF48	Boots UK Ltd	Boots Pharmacy (5362)	Fore Street		Castle Cary	BA7 7BG	40 hr	Y		Y	Y			y	y	y	y	
FFR15	Day Lewis plc	Day Lewis Pharmacy	31, High Street		Ilchester	BA22 8NH	40 hr			Y	L			y	y	y	y	
FNV27	Boots UK Ltd	Boots Pharmacy (5366)	Cheapside		Langport	TA10 9PH	40 hr			Y	Y			y	y	y		
FH826	National Co-operative Chemists Ltd	Co-operative Pharmacy (200293)	The Chantry	Church Street	Martock	TA12 6JL	40 hr			Y	Y			y	y	y	y	y
FML59	Milborne Port Pharmacy Ltd	Milborne Port Pharmacy	10 High Street		Milborne Port	DT9 5AG	40 hr											
FD004	Boots UK Ltd	Boots Pharmacy (5367)	Eddystone House	West Street	Somerton	TA11 7PR	40 hr	L		Y	Y			y	y	y	y	

FGT40	Boots UK Ltd	Boots Pharmacy (2353)	6 Market Square		South Petherton	TA13 5BT	40 hr	Y		Y	Y			y	y	y	y	
FME12	John Ware Ltd	South Petherton Pharmacy	Primary Healthcentre	Bernard Way	South Petherton	TA13 5EF	100 hr			Y	Y							
FLE02	Day Lewis plc	Day Lewis Pharmacy	Matts Lane		Stoke-Sub-Hamdon	TA14 6QE	40 hr	Y		Y	Y							
FJ403	Boots UK Ltd	Boots Pharmacy (5475)	29-31 High Street		Wincanton	BA9 9JU	40 hr	L		Y	Y			y	y	y	y	
FWQ87	Boots UK Ltd	Boots Pharmacy (1309)	Wincanton Health Centre	Dykes Way	Wincanton	BA9 9FQ	40 hr	Y		Y	Y			y	y	y	y	y
FAP59	Asda Stores Ltd	Asda Pharmacy	Preston Road		Yeovil	BA20 2HB	100 hr	Y	Y	Y				y	y	y	y	
FT109	Day Lewis plc	Day Lewis Pharmacy	Abbey Pharmacy	5a The Forum, Abbey Manor Park	Yeovil	BA21 3TL	40 hr	Y		Y	Y			y	y	y	y	
FJG42	Day Lewis plc	Day Lewis Pharmacy	72 Hendford		Yeovil	BA20 1UY	40 hr	Y		Y	Y			y	y	y	y	y
FH355	John Preddy Co Ltd	Preston Grove Pharmacy	Preston Grove Medical Centre	Preston Grove	Yeovil	BA20 2BQ	40 hr	Y		L	Y			y				
FV219	John Ware Ltd	Options Pharmacy	61b West Coker Road		Yeovil	BA20 2JD	40 hr			Y	L							
FXF88	L Rowland & Co (Retail) Ltd	Rowlands Pharmacy	Marsh Lane		Yeovil	BA21 3BA	40 hr			Y	Y		S	y	y	y	y	
FMQ12	Naimans UK Ltd	Penn Hill Pharmacy	9 South Street		Yeovil	BA20 1QE	40 hr	Y		Y	Y			y	y	y	y	
FAL04	National Co-operative Chemists Ltd	Co-operative Pharmacy (200295)	67 St Johns Road		Yeovil	BA21 5NJ	40 hr			Y	Y			y	y	y	y	
FP032	Superdrug Stores plc	Superdrug Pharmacy	15 The High Street		Yeovil	BA20 1RQ	40 hr			Y	L			y	y	y	y	
FLP95	Tesco Stores Ltd	Tesco In Store Pharmacy	Off Queensway	Huish	Yeovil	BA20 1DL	40 hr	Y		Y	Y			y	y	y	y	
FLY88	Boots UK Ltd	Boots Pharmacy (305)	37 Middle Street		Yeovil	BA20 1LG	40 hr	Y	Y	Y	Y			y	y	y		

Table II.6.2 Dispensing Doctors' Practices and Branches in South Somerset Healthcare

Contract Code	Contract Name	Address1	Address2	Address3	Postcode	Opening Hours	Type
L85033	Langport Surgery	North Street		Langport	TA109RH		dispensing GP practice
L85044	Queen Camel Medical Centre	West Camel Road	Queen Camel	Yeovil	BA227LT		dispensing GP practice
L85045	Westlake Surgery (Cox)	High Street		West Coker	BA229AH	Monday, Tuesday, 08.30-19.00; Wednesday-Friday 08.00-18.30	dispensing GP practice
Y01163	Westlake Surgery (Smith)	High Street		West Coker	BA229AH	Monday, Tuesday, 08.30-19.00; Wednesday-Friday 08.00-18.31	dispensing GP practice
L85031	Milborne Port Surgery	Gainsborough	Milborne Port	Sherborne	DT9 5FH		dispensing GP practice
L85031	Templecombe Surgery	Rock House	Templecombe		BA8 0JR		dispensing GP practice branch

South Somerset Healthcare federation is supported by twenty-one 40 hour pharmacies, ten of which are based in Yeovil. There are also two 100 hour pharmacies, one in Yeovil and one in South Petherton. Additionally there are five dispensing practices and one dispensing branch in the federation.

Table II.6.3 Number of Pharmacies and Dispensing Practices – South Somerset Healthcare

	Pharmacies		Dispensing GP		Total	GP registered population	Pharmacies /100,000	Providers /100,000
	100 hr	40 hr	practice	branch				
South Somerset Healthcare	2	21	5	1	29	121,900	18.9	23.8
Somerset	12	91	22	5	130	554,100	18.6	23.5
South West	1048		181		1229	5,301,000	19.8	23.2

Federation and Somerset Pharmacies, Dispensing GP and population figures as at July 2014, rounded to nearest 100

South West Pharmacies and Dispensing GP figures as at March 2013; population mid-2011 ONS estimate rounded to nearest 1000

The number of pharmacies per 100,000 and pharmaceutical providers per 100,000 in South Somerset Healthcare federation is roughly equal to that for Somerset and the South West region as a whole.

Population & context for health

The Federation has a similar population age profile to the Somerset average. The Federation has some pockets of extreme deprivation, with 8% of people living in the 10% most deprived areas of Somerset but in general is affluent with only 11% living in the 20% most deprived areas. Wider determinants of health are generally more favourable than average. The Index of Multiple Deprivation score for the Federation is 14.7.

Mortality, causes and places of death

Life expectancy is about average. Premature mortality is similar to the county average, with 12% of deaths occurring before age 65 compared to 13% Somerset average. The mortality rate due to COPD is one of the worst in the county. Standardised mortality ratios for different conditions and age groups are shown on p.19. A low proportion of people die at home in this Federation compared to others.

Disease prevalence

Disease prevalence is about average compared to modelled rates. The Federation has the lowest rates compared to expected levels for stroke and highest rates of depression. Disease levels compared to the rest of Somerset are about average. The proportions of people with diabetes, COPD and dementia who have been diagnosed is similar to other areas in the county. Overviews of respiratory and cardiovascular health issues for the Federation are shown in the immediately following summary pages.

Smoking

Smoking rates are low with only 14% of adults 16+ recorded as smokers compared to 16% Somerset average. The Federation has one of the lowest proportion of recorded smokers going through any type of smoking cessation service. Smoking in pregnancy remains a challenge for the whole county with high rates compared to the rest of England, although a Federation breakdown is not available.

Excess weight

The rates of obesity in adults is similar to Somerset average but rates of excess weight in school children are much higher than Somerset average, with 25% at 4-5 and 33% at 10-11 being overweight or obese. For many childhood weight indicators the Federation scores worst in the county.

Drugs and Alcohol

Hospital admissions for drug and alcohol related reasons are higher than the Somerset average.

Sexual health

Cervical screening rates (25-49y) are similar to the county average. Rates of teenage deliveries are higher than the county average.

Immunisations

Childhood vaccination rates are generally good. This is a similar situation to last year. DH targets are for 95% uptake for all so there is still room for improvement. Seasonal flu vaccination rates are about average although the Federation achieves the second highest rate for vaccination of carers.

Screening

Cervical and breast cancer screening rates are about average for the county. Although there are small numbers, breast cancer screening rates have particularly improved for those aged 50-52 which may be a 'mobile screening van' effect. Bowel screening rates are some of the best in the county. The Federation has one of the highest rates of inadequate smears - this has not changed much from last year but improvements in other areas have not been seen locally. The Federation has good rates of invitation but low uptake amongst those eligible for NHS Health Checks programme, so there is still room to improve against national targets.

Hospital admission rates

Emergency admission rates are in general slightly higher than average in the county. Emergency admission rates for falls in over 65s are 31 per 1000 compared to 26 per 1000 county average. Rates for respiratory disorders and injury and poisoning are the highest / worst in the county. As a proxy for mental health, emergency hospital admissions for self-harm and mental and behavioural disorders are some of the highest in the county.

QIPP Prescribing

QIPP Prescribing indicators show a mixed picture in comparison to other Federations. Prescribing rates for low cost lipid modifying drugs are the worst in the county.

Suggested public health areas to prioritise

- Reduce child excess weight levels

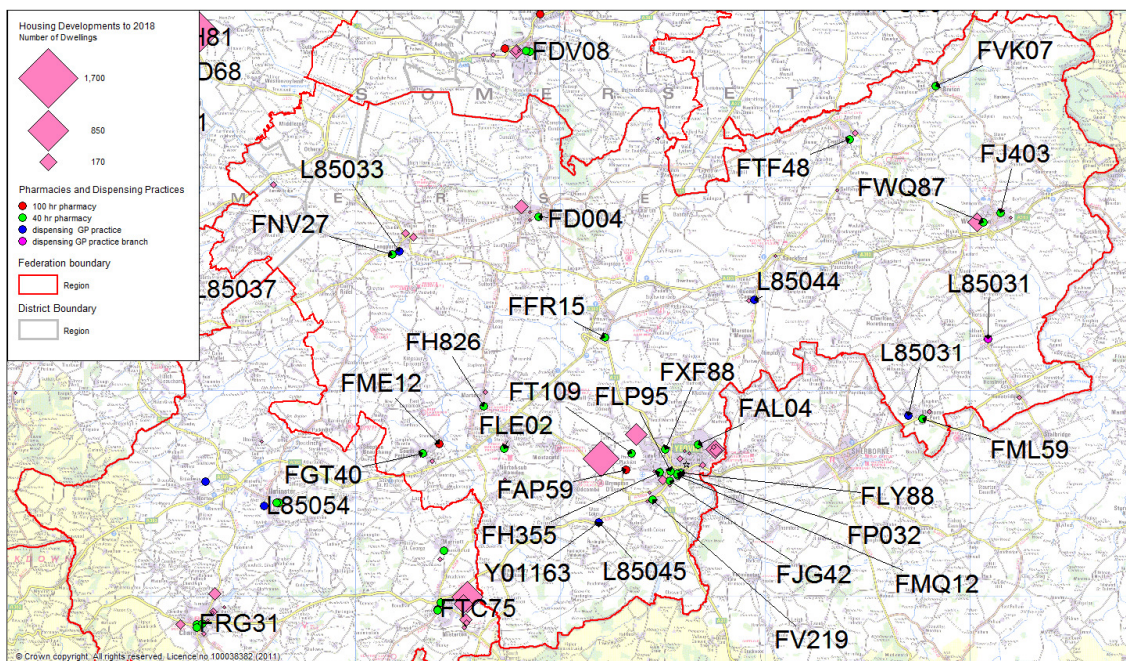
- Reduce risky alcohol consumption in adults
- Improve mental health
- Improve respiratory health

Population Growth

South Somerset Healthcare lies almost entirely within South Somerset District, which is projected by the ONS to grow by 3.7% between 2012 and 2018. The population aged 65 to 84 is expected to increase roughly in line with the county average, with 21.9% rise, however the population aged 85 and over is expected to increase by 23.1% which is a larger than the county average.

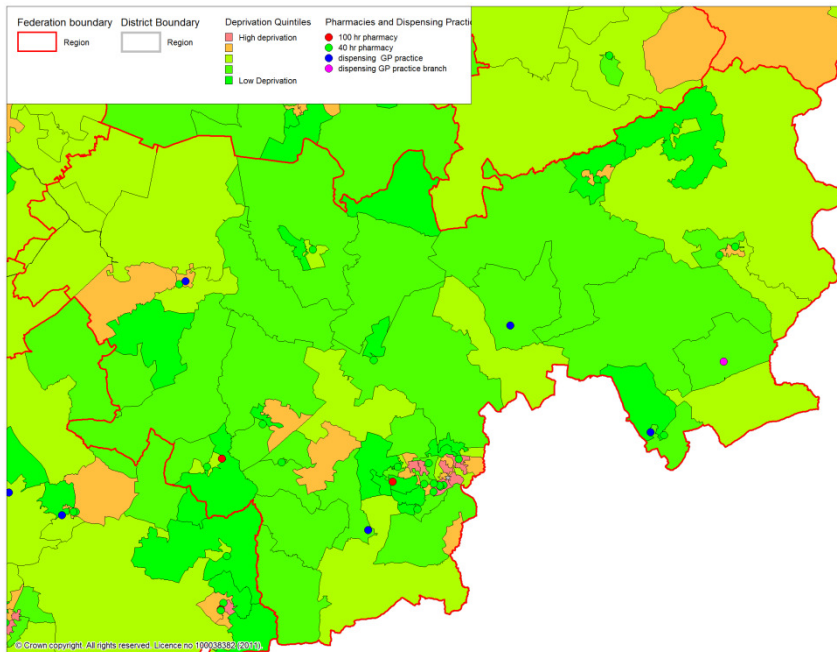
Housing allocations suggest that approximately 2,200 new dwellings are expected in South Somerset Healthcare implying a high level of growth, especially in Yeovil. Declining household size and limited house building may mean a falling population in some rural parts.

Map II.6.1 Housing Developments and Pharmacy Services in South Somerset Healthcare



The map indicates a relatively large scale of expected development in the area around Yeovil which is well served by pharmaceutical dispensaries. The other expected housing developments in the federation are also located very close to existing pharmaceutical outlets.

Map II.6.2 Deprivation and Pharmacy Services in South Somerset Healthcare



The map, showing Somerset quintiles of deprivation in the 2010 Index of Multiple Deprivation, indicates that deprivation levels are low across the Federation except for some localised pockets. Where deprivation is highest, especially the area around Yeovil, there is pharmaceutical provision.

South Somerset Healthcare Federation is the largest in the county, by some distance, and as such includes considerable diversity between the largely rural areas and the county's second town of Yeovil, which is not only the centre of population but the location of the most deprived communities and greatest expected growth. There is good existing pharmaceutical provision within the town, and it cannot be said that existing pharmacies will be unable to cope with growth in the period of this PNA. If any gaps in provision do occur in the period, it is most likely to be in large, peripheral housing estates where access to the town centre is poor. It is very unlikely that any additional provision will be needed elsewhere.