

# Somerset Pharmaceutical Needs Assessment **2018-21**

Somerset Health and Wellbeing Board

## **ANNEXE 4 EAST MENDIP COMMISSIONING LOCALITY**

## 4.1 East Mendip

### 4.1.1 Overview

The East Mendip commissioning locality is in north east of Somerset. The area is largely rural with the population, and future development, concentrated in Frome.

Health need is taken from the East Mendip Commissioning Locality Profile for 2016

<http://www.somersetintelligence.org.uk/files/East%20Mendip%20Cloc%202016.pdf>

which should be considered part of the Somerset PNA 2018.

### 4.1.2 Population & context for health

The population registered with GPs in the locality was 43,837 in 2016. The area has slightly more younger people compared to the Somerset average and fewer older people. The Index of Multiple Deprivation for the local area is 17.8 representing similar levels of deprivation compared to the Somerset average of 18.1.

#### Disease prevalence

- Significantly worse (higher number than expected compared to the county average) for:
  - Hypertension
  - Asthma
  - Mental health
- The Commissioning Locality has the worst value (highest number compared to the expected based on county average) in the county for:
  - Asthma
- Significantly better (lower number than expected compared to the county average) for:
  - Coronary Heart Disease
  - Epilepsy (18+)
  - Learning Difficulties
  - Obesity (16+)
  - Osteoporosis (50+)
  - Thyroid

- The Commissioning Locality has the best value (lowest number compared to the expected based on county average) in the county for:
  - Coronary Heart Disease
  - Epilepsy (18+)
  - Osteoporosis (50+)
  - Thyroid

## **Mortality**

The 'death blobs' for mortality and years of life lost provide a visual indication of the key causes of death in East Mendip Commissioning Locality. The proportion of deaths occurring before age 65 years is 12.5% which is similar to the Somerset rate of 12.0%.

# DEATHS

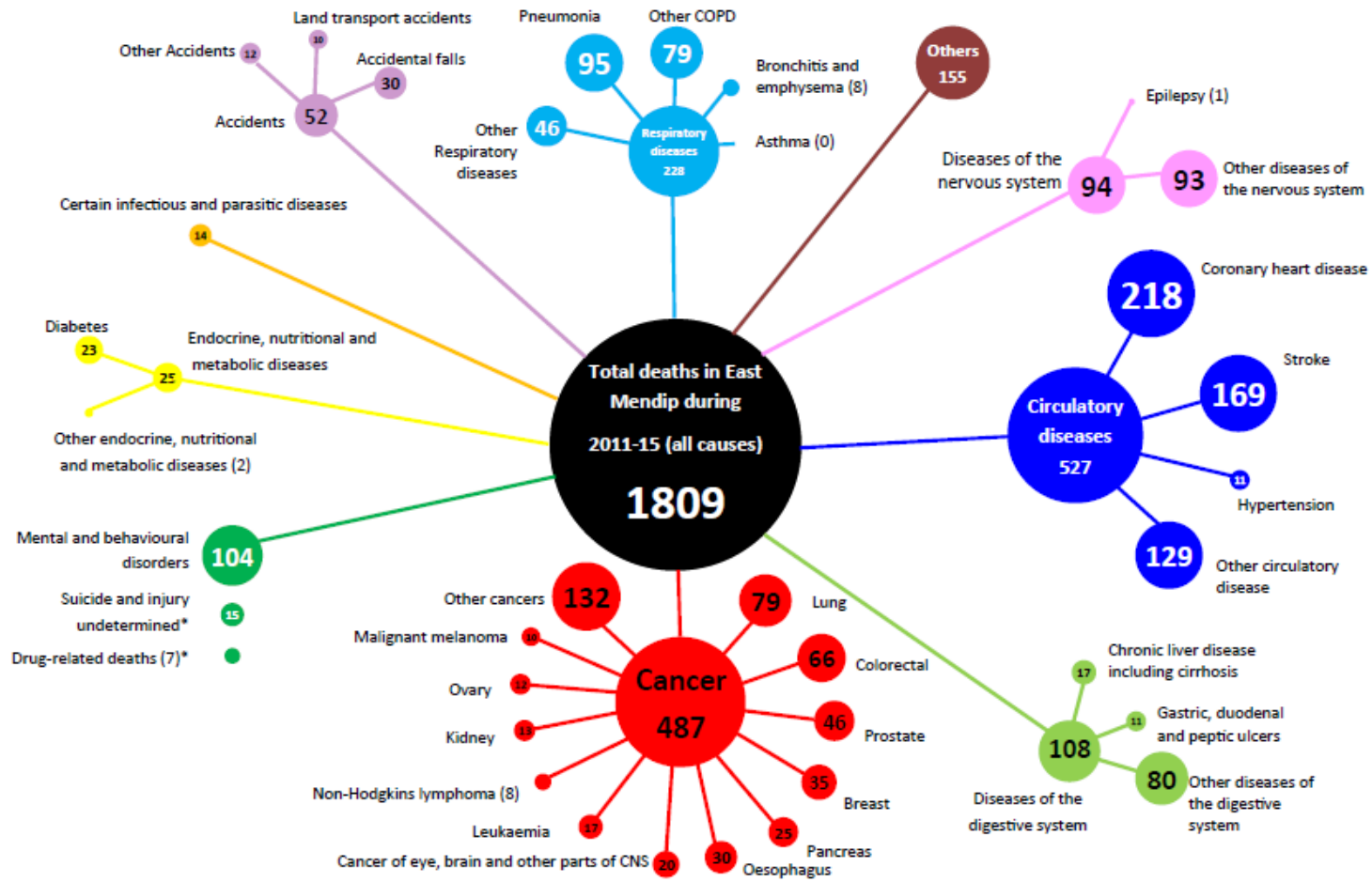


Figure 1: 'Death Blobs' for East Mendip

## YEARS OF LIFE LOST BEFORE THE AGE OF 75

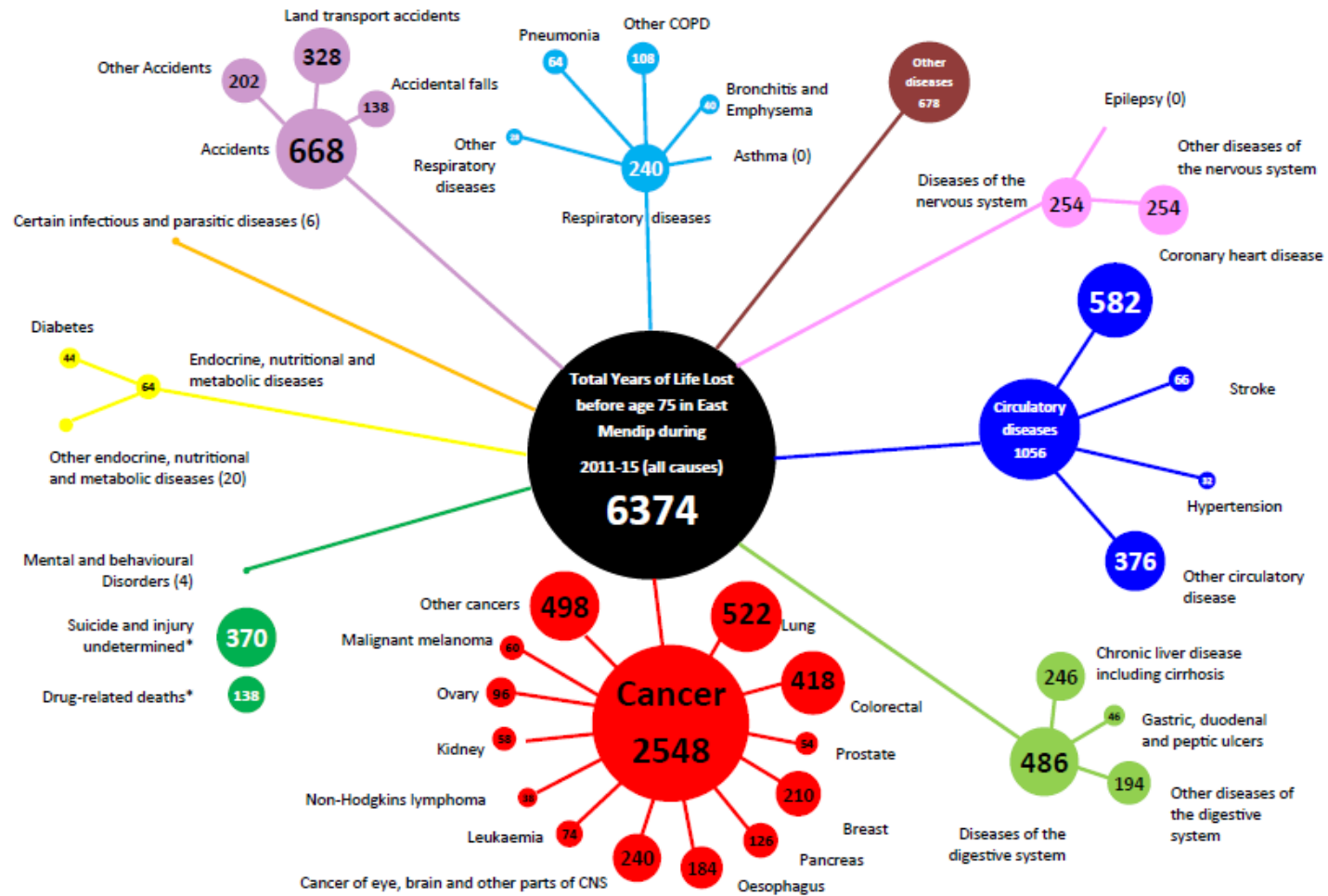


Figure 2: 'Years of life lost blobs' for East Mendip

# East Mendip Providers of Pharmaceutical Services 2017

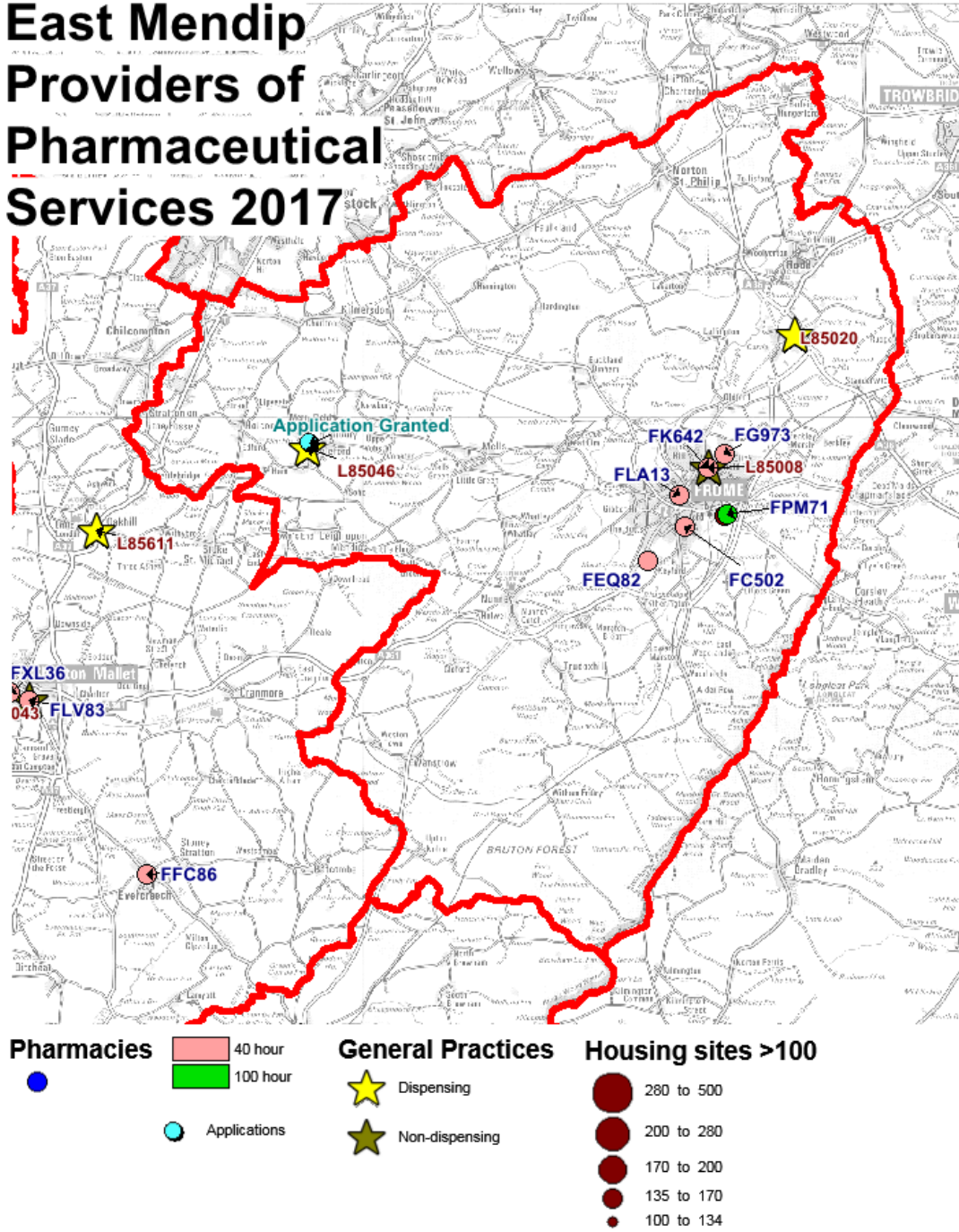


Figure 3: East Mendip Commissioning Locality

## **Screening**

The commissioning arrangements have changed for the NHS Health Checks programme. Of those eligible, 35.6% received a health check. In the most deprived quintile, 43.9% of the population received a check.

Cervical screening rates for those aged 25-49 years old, at 73.0%, are similar to the county average of 72.3%. Practice based rates of chlamydia screening of eligible 15-24 year olds was 4.6%, much higher than the Somerset average rate of 3.0%. As last year, this is the best rate in the county.

## **Immunisations**

MMR vaccination rates are far below the target for herd immunity of 95%, with 91.9% vaccinated by age 2.

## **Childhood environment**

Local breastfeeding initiation rates are 81.9% compared to 80.7% in Somerset. Continuation rates at 6-8 weeks are 53.5% compared to 49.4% in the county as a whole.

## **Excess weight**

According to the underlying model used to assess appropriate childhood weight, only 15% children should be of excess weight. Somerset rates are 22.4% at age 4-5 years and 30.4% at age 10. For this Commissioning Locality, estimated rates are 21.4% and 28.6% for each age group. The percentage of adults in the area who are obese is 7.3% which is the lowest in the county.

## **Smoking**

The Commissioning Locality has 12.1% of adults over age 16 recorded as smokers compared to a 12.8% Somerset average. This is a low rate of smokers but the smoking ascertainment rate is poor and has declined again since last year so some problems may be masked. In 2015/16, only 46 per 1000 recorded smokers in East Mendip went through cessation services compared to 66 per 1000 in 2013-15. This is a higher than average proportion compared to other Commissioning Localities but this number is dramatically down in absolute terms.

## **Drugs and Alcohol**

Hospital admissions for drug and alcohol related reasons are lower than the Somerset average. Alcohol related admissions: East Mendip 1,840 per 100,000; Somerset 1,894 per 100,000. Drug related admissions: East Mendip 119 per 100,000; Somerset 137 per 100,000.

## **Hospital admission rates**

To focus on a few indicators, the emergency admission rate for falls in the over 65s is 38 per 1000 as compared to the Somerset average of 31 per 1000. The self-harm admission rate is 263 per 100,000 which is the highest for the county.

## **Suggested public health priority areas**

- Increase numbers of smokers referred to stop smoking services
- Increase seasonal flu vaccination rates.
- Reduce rates of admissions for falls.



### 4.1.3 Details of GP surgeries

Code	Name	Address		Post code	Dispensing	Prescribing	Total
L85020	Beckington Family Practice	St Luke's Surgery,	Beckington	BA11 6SE	5,525	4,130	9,655
L85046	Mendip Country Practice	Church Street, Coleford	Radstock	BA3 5NQ	4,635	651	5,286
L85008	Frome Medical Centre	Enos Way	Frome	BA11 2FH	0	28,972	28,972

### 4.1.4 Housing developments

**Table 1: East Mendip - Significant housing developments 2018-20 - expected number of dwellings**

Location	Total	Site (over 100)	Number
Frome	680		
		<i>Edmund Park</i>	<i>140</i>
Rest of Locality	200		
Sites to be determined	80		
<b>Total</b>	<b>960</b>		

The scale of development in the East Mendip is typical of the county, with the concentration of new housebuilding in Frome. The scale and proximity to existing providers means that this does not, in itself, constitute a gap in provision during the period of the PNA.

#### 4.1.5 Necessary services: current provision

##### Pharmacy

Code	Contract Name	Trading Name	Address	Post-code	100 Hour	Electronic Prescription Service available	Access to Summary Care Record	NHSmail address as at 2-6-17	Number of prescription fees paid	Of which items on electronic prescriptions	Elastic Hosiery items
FC502	Acorn pharmacy Ltd	Acorn pharmacy	95 Locks Hill, Frome	BA11 1NG	No	Yes	Yes		65470	18245	0
FPM71	Asda Stores Ltd	Asda pharmacy	Warminster Road, Frome	BA11 5LA	Yes	Yes	Yes		63133	15484	2
FLA13	Boots UK Ltd	Boots pharmacy	10-11 Market Place, Frome	BA11 1AB	No	Yes	Yes		140411	38245	6
FG973	Lloyds Pharmacy Ltd	Lloyds Pharmacy	96 Forest Road, Frome	BA11 2TU	No	Yes	Yes	Yes (NUMSAS OK)	102590	26190	2
FEQ82	Lloyds Pharmacy Ltd	Lloyds Pharmacy	Sainsbury's, Wessex Fields, Frome	BA11 4DH	No	Yes	Yes	Yes (NUMSAS OK)	97298	26457	0
FK642	St Aldhelm's Pharmacy Ltd	St Aldhelm's Pharmacy	Enos Way, Frome	BA11 2FH	No	Yes	Yes	Yes (NUMSAS OK)	275462	41977	6

In addition, an application by Dudley Taylor Pharmacies has been granted for Coleford, with the pharmacy yet to open.

## Dispensing Appliance Contractors

None

## Dispensing doctor details

Practice Code	Practice Name	Address	Postcode	Opening Hours	Type
L85020	Beckington Family Practice	St Luke's Surgery, Beckington	BA11 6SE	Mon, Th, Fri 08.30- 12.30; Tu 14.00- 19.30; Wed closed	dispensing GP practice
L85046	Mendip Country Practice	Church Street, Coleford, Radstock	BA3 5NQ	Mon, Wed-Fri 08.00- 18.30; Tue 07.00- 18.30	dispensing GP practice

### Notable provision from outside the locality

Some provision is possible for residents of the locality from Trowbridge and other towns in Wiltshire, or from Radstock from those in the north. Those who commute to Bath or further afield may also be provided for at their place of work.

## Pharmacies and Items per head

	Number	Regd Patients	Per 10,000	Items dispensed	Items per head
Pharmacies	6	33,753	1.8	744,364	22.1
Doctors' dispensaries	2	10,160	2.0	227,784	22.4
East Mendip total	8	43,913	1.8	972,148	22.1
Somerset total	127	568159	2.2	10,862,687	19.1

The numbers of total outlets per head is slightly lower than the Somerset average, and the number of items dispensed per head is slightly higher. It should be noted that these are indicative, as dispensing practices' and pharmacies' prescribing is not identical; dispensing patients can also use community pharmacies; and there is no requirement for a particular number of pharmaceutical providers per head.

## Transport/access assessment

The population weighted score for the locality on the Barriers to Housing and Services domain of the Index of Multiple Deprivation is 27.4 compared to a Somerset average of 25.2. This makes it slightly more deprived in Somerset on this basis.

## Opening hours coverage

### East Mendip – Weekday opening

	24 hrs	1	2	3	4	5	6	7	8	9	10	11	12	13	14	15	16	17	18	19	20	21	22	23	24
<b>Frome</b>																									
Acorn pharmacy Ltd	FC502										●	●	●	●		●	●	●	●						
Asda Stores Ltd	FPM71								●	●	●	●	●	●	●	●	●	●	●	●	●	●	●	●	●
									Not Mon																
Boots UK Ltd	FLA13									◐	●	●	●	●	◐	●	●	●	●	◐					
Lloyds Pharmacy, Forest Road	FG973									◐	●	●	●	◐	◐	◐	●	●	●						
Lloyds Pharmacy Ltd, Sainsbury's, Wessex Fields	FEQ82									◐	●	●	●	●	◐	●	●	●	●	◐	◐	◐			
St Aldhelm's Pharmacy Ltd	FK642									◐	●	●	●	●	◐	●	●	●	●	◐					
																				1830 on Fri					
<b>Frome</b>	Core	<b>None</b>								<b>At least one open</b>														<b>N</b>	
	Total	<b>None</b>								<b>At least one open</b>														<b>N</b>	
<b>Villages with Dispensing Practices only</b>																									

	24 hrs	1	2	3	4	5	6	7	8	9	10	11	12	13	14	15	16	17	18	19	20	21	22	23	24
<b>Beckington</b>	L85020									●	●	●	●	●		●	●	●	●	●	●				
										Mon, Thu, Fri					Tue only										
<b>Coleford</b>	L85046								●	●	●	●	●	●	●	●	●	●	●	●	●				
									Tue only																
<b>East Mendip locality</b>	Core	None							At least one open															N	
	Total	None							At least one open															N	
	24 hrs	1	2	3	4	5	6	7	8	9	10	11	12	13	14	15	16	17	18	19	20	21	22	23	24

### East Mendip – Saturday opening

	24 hrs	1	2	3	4	5	6	7	8	9	10	11	12	13	14	15	16	17	18	19	20	21	22	23	24
<b>Frome</b>																									
Acorn pharmacy Ltd	FC502										●	●	●	●											
Asda Stores Ltd	FPM71								●	●	●	●	●	●	●	●	●	●	●	●	●	●	●		
Boots UK Ltd	FLA13								◐	●	●	●	●	◐	●	◐	◐	◐							
Lloyds Pharmacy, Forest Road	FG973									◐	●	●	◐												
Lloyds Pharmacy Ltd, Sainsbury's, Wessex Fields	FEQ82								●	●	●	●	●	●	●	●	●	●	●	●	●	●			
St Aldhelm's Pharmacy Ltd	FK642									●	●	●	●												
<b>Frome</b>	Core	<b>None</b>								<b>At least one open</b>														<b>N</b>	
	Total	<b>None</b>								<b>At least one open</b>														<b>N</b>	
<b>Villages with Dispensing Practices only</b>																									
<b>Beckington</b>	L85020																								
<b>Coleford</b>	L85046																								
<b>East Mendip locality</b>	Core	<b>None</b>								<b>At least one open</b>														<b>N</b>	
	Total	<b>None</b>								<b>At least one open</b>														<b>N</b>	



	24 hrs	1	2	3	4	5	6	7	8	9	10	11	12	13	14	15	16	17	18	19	20	21	22	23	24
--	--------	---	---	---	---	---	---	---	---	---	----	----	----	----	----	----	----	----	----	----	----	----	----	----	----

### East Mendip – Sunday opening

	24 hrs	1	2	3	4	5	6	7	8	9	10	11	12	13	14	15	16	17	18	19	20	21	22	23	24
<b>Frome</b>																									
Acorn pharmacy Ltd	FC502																								
Asda Stores Ltd	FPM71											●	●	●	●	●	●								
Boots UK Ltd	FLA13											●	●	●	●	●	●								
Lloyds Pharmacy, Forest Road	FG973																								
Lloyds Pharmacy Ltd, Sainsbury's, Wessex Fields	FEQ82											●	●	●	●	●	●								
St Aldhelm's Pharmacy Ltd	FK642																								
<b>Frome</b>	Core	None										At least one open						N							
	Total	None										At least one open						N							
<b>Villages with Dispensing Practices only</b>																									
<b>Beckington</b>	L85020																								
<b>Coleford</b>	L85046																								
<b>East Mendip</b>	Core	None										At least one open						N							

	24 hrs	1	2	3	4	5	6	7	8	9	10	11	12	13	14	15	16	17	18	19	20	21	22	23	24
locality	Total	None										At least one open						N							
	24 hrs	1	2	3	4	5	6	7	8	9	10	11	12	13	14	15	16	17	18	19	20	21	22	23	24

## Key to Opening Hours diagrams

### Community Pharmacies

- Open for whole hour - Core
- ◐ Open for first part of hour (usually 30 minutes) - Core
- ◑ Open for second part of hour (usually 30 minutes) - Core
- Open for whole hour – Supplementary
- ◐ Open for first part of hour (usually 30 minutes) – Supplementary
- ◑ Open for second part of hour (usually 30 minutes) - Supplementary

### Dispensing GP Practices

- Open for whole hour, all or most weekdays
- ◐ Open for first part of hour (usually 30 minutes), all or most weekdays, or Saturday
- ◑ Open for second part of hour (usually 30 minutes), all or most weekdays, or Saturday
- Open for whole hour, minority of days per week
- ◐ Open for first part of hour (usually 30 minutes), minority of days per week
- ◑ Open for second part of hour (usually 30 minutes), minority of days per week

These diagrams are simplifications of sometimes complex opening times, in which several days in a week may have their own schedules. The definitive list of opening times is shown in Appendix 5.

## Advanced Services and Locally Commissioned Services (Somerset CC Public Health and Somerset CCG)

Pharmacy	Contractor	Address1	Medicines Use Reviews	New Medicines Service interventions	Appliance Use Reviews	Stoma Appliance Customisations	Fees for appliances requiring home delivery	Appliances requiring measuring and fitting	Flu Vaccinations	Specialist Medicines Enhanced Service	Supervised Admin of Medication	Emergency Hormonal Contraception 16-17	Chlamydia screening	Needle exchange	NHS health checks	Smoking Cessation (Champix)	Smoking Cessation (1:1 support)	Minor Ailments Service
Acorn pharmacy Ltd	FC502	95 Locks Hill, Frome	●	●			●		●		●	●		●		●		●
Asda Stores Ltd	FPM71	Warminster Road, Frome	●	●			●	●	●	●	●	●				●		●
Boots UK Ltd	FLA13	10-11 Market Place, Frome	●	●			●	●	●		●	●						●
Lloyds Pharmacy , Forest Road	FG973	96 Forest Road, Frome	●	●		●	●	●	●		●	●						●

Lloyds Pharmacy Ltd, Sainsbury's, Wessex Fields	FEQ82	Sainsbury's, Wessex Fields, Frome	●	●			●		●					●			●		
St Aldhelm's Pharmacy Ltd	FK642	Enos Way, Frome	●	●			●		●		●	●					●		●
Locality																			

## **Hospital pharmacies, walk-in centres, private pharmacies**

There is a community hospital and minor injuries unit in Frome.

### **4.1.6 Necessary services: gaps in provision**

The health needs of East Mendip, and the availability of pharmaceutical services are broadly similar to the county average.

The 2015 Somerset PNA did not identify a gap in the provision of necessary services in the locality. Since then an unforeseen benefits application has been granted for Coleford, indicating a current need which will be met by the granted application. Although there has been development and growth since 2015 we do not conclude that has led to the creation of a gap in provision.

During the week, the population is served from 7AM to 11PM by core hour opening, although in the early and late hours this is dependent upon the 100 hour pharmacy in Asda in Frome. On Saturdays the (unsupplemented) core hour opening is from 7AM to 10PM; on Sundays core hours are from 10AM to 4PM (Asda) with two other pharmacies open for the same period on supplementary hours.

All pharmacies in the locality provide MURs and NMS, and one pharmacy provides the access to specialist medicines enhanced service.

**On the basis of the information we have, we therefore conclude that there is no current gap in the provision of necessary services in East Mendip.**

**There will be a future need for necessary services in Coleford if the application which has been granted lapses without a pharmacy opening.**

The level of housebuilding expected in the next three years broadly comparable to that in the county as a whole, with the bulk of development being on the outskirts of the main town of Frome. We assess that the expected level of development could be accommodated by existing pharmaceutical suppliers.

**On the basis of the information we have, we conclude that if the expected level of development in East Mendip takes place then there will be no gap in provision of necessary services.**

### **Improvements or better access: gaps in provision**

We note that all advanced services, apart from Appliance Use Reviews, are provided in the locality. We do not have evidence that the lack of Appliance Reviews is the result of their absence or a lack of demand. We note that AURs are available in East

Mendip from visits by Dispensing Appliance Contractors, and from Acute Hospital trusts. Of locally commissioned services, we note that 1:1 smoking support is not available, although Champix is; health checks are not available through pharmacies in East Mendip, although we note that they are available at Frome Health Centre.

**We recommend that Somerset Public Health consider whether 1:1 smoking support should be made available through East Mendip pharmacies. We have not identified any other current gaps in other relevant services.**

The growth in population will not create demand for any entirely new service.

**On the basis of the information we have, we do not assess there to be a future gap in other relevant services beyond that identified currently.**