

Somerset Pharmaceutical Needs Assessment **2018-21**

Somerset Health and Wellbeing Board

ANNEXE 9 WEST SOMERSET COMMISSIONING LOCALITY

9.1 West Somerset

9.1.1 Overview

The West Somerset commissioning locality is in west of the county. The main settlement is Minehead, and apart from the coastal strip to the east the locality is sparsely populated, especially on Exmoor. The resident population is added to by tourists, especially in the summer.

Health need is taken from the West Somerset Commissioning Locality Profile for 2016

<http://www.somersetintelligence.org.uk/files/West%20Somerset%20Cloc%202016.pdf>

which should be considered part of the Somerset PNA 2018.

9.1.2 Population & context for health

The population registered with GPs in the locality was 33,250 in 2016. The area has a much older population profile to the rest of Somerset with proportionally fewer young people and more older people. The Index of Multiple Deprivation for the local area is 23.2 representing higher levels of deprivation compared to the Somerset average of 18.1.

Disease prevalence

- Significantly worse (higher number than expected compared to the county average) for:
 - Learning Difficulties (18+)
 - Obesity (16+)
 - Palliative Care
 - Stroke

- The Commissioning Locality has the worst value (highest number compared to the expected based on county average) in the county for:
 - Atrial Fibrillation
 - Learning Difficulties (18+)
 - Obesity (16+)

- Stroke
- Significantly better (lower number than expected compared to the county average) for:
 - Dementia
 - Diabetes (17+)
 - Hypertension
- The Commissioning Locality has the best value (lowest number compared to the expected based on county average) in the county for:
 - Dementia
 - Heart Failure
 - Hypertension
 - Rheumatoid Arthritis (16+)

Mortality

The 'death blobs' for mortality and years of life lost provide a visual indication of the key causes of death in the West Somerset Commissioning Locality. The proportion of deaths occurring before age 65 years is 10.7% which is similar to the Somerset rate of 12.0%.

DEATHS

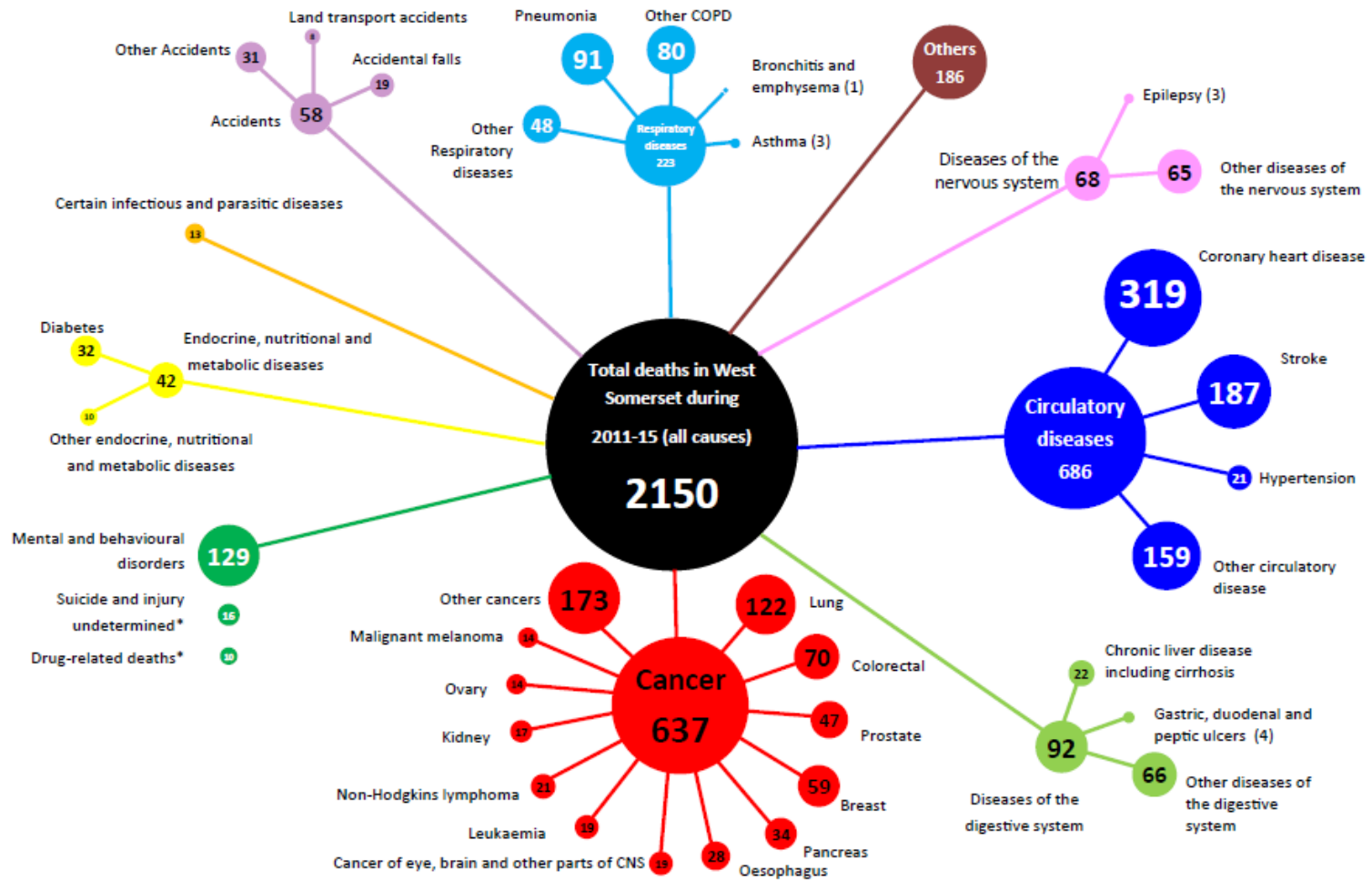


Figure 1: 'Death blobs' for West Somerset Commissioning Locality

YEARS OF LIFE LOST BEFORE THE AGE OF 75

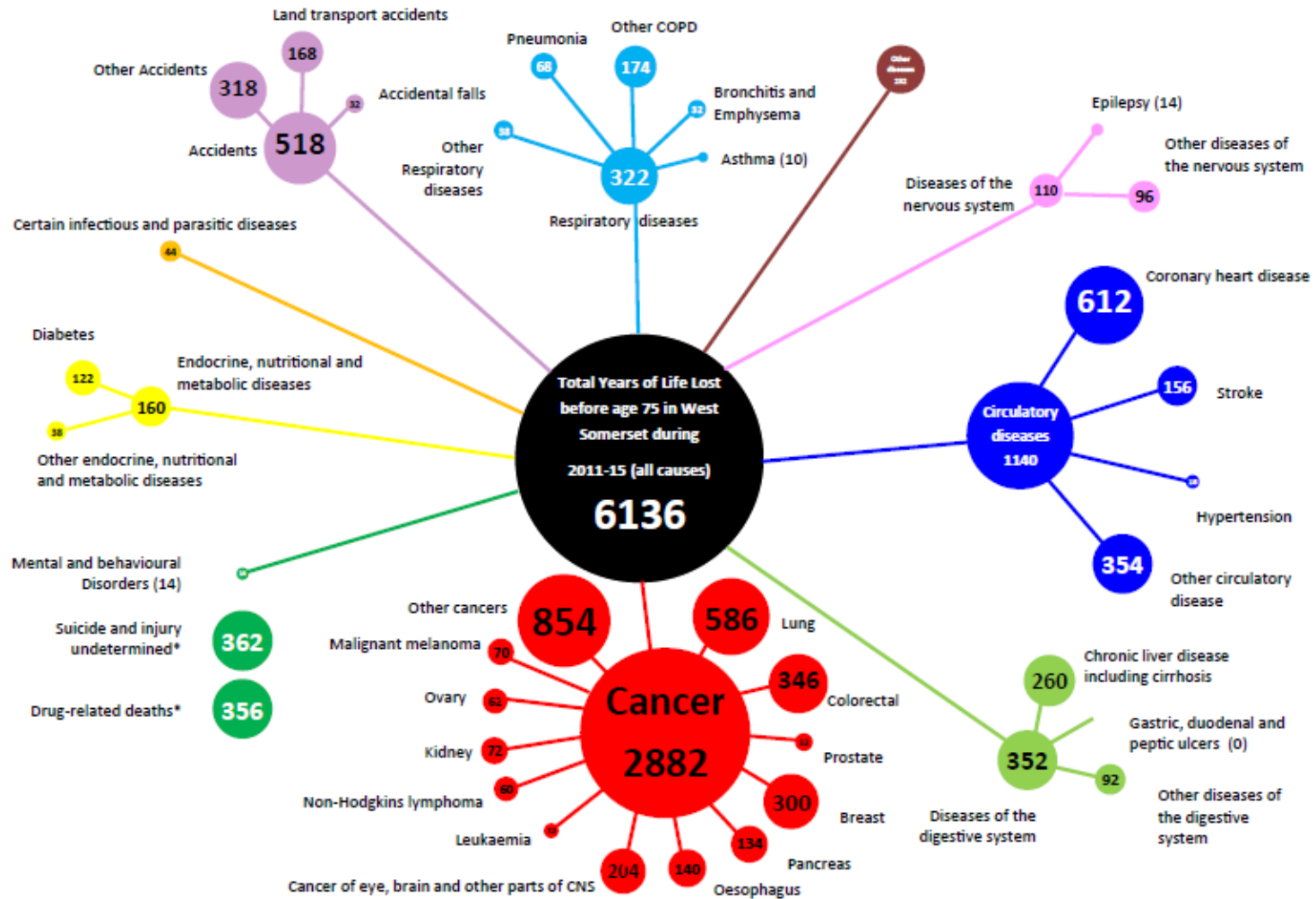


Figure 2: 'Years of life lost blobs' for West Somerset Commissioning Locality

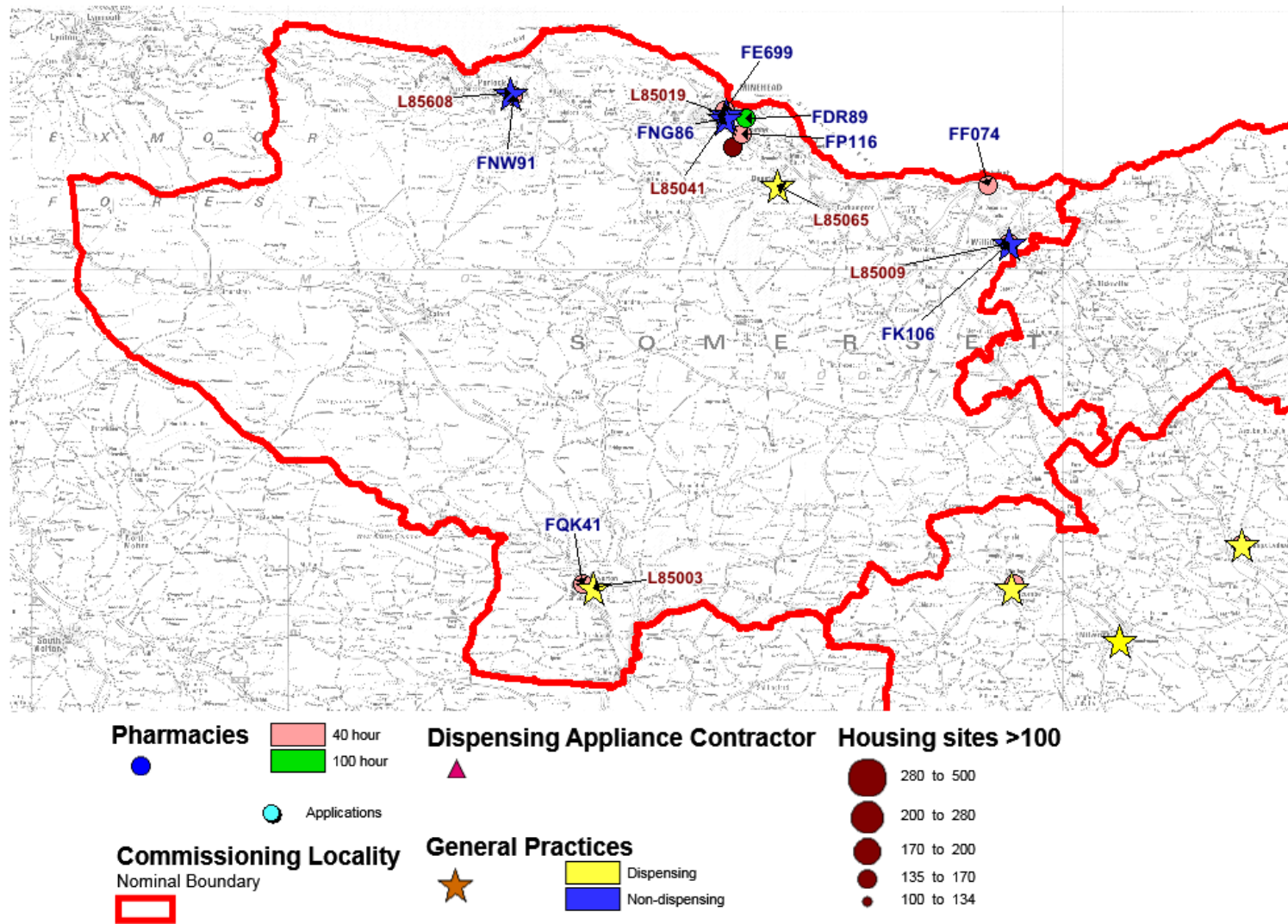


Figure 3: West Somerset Commissioning Locality

Screening

The commissioning arrangements have changed for the NHS Health Checks programme. Of those eligible, 10.7% received a health check. In the most deprived quintile, 6.4% of the population received a check.

Cervical screening rates for those aged 25-49 years old, at 66.5%, are the lowest / worst in the county of 72.3%. Practice based rates of chlamydia screening of eligible 15-24 year olds was 2.1%, much lower than the Somerset average rate of 3.0%.

Immunisations

MMR vaccination rates are at the target for herd immunity of 95%, with 95.0% vaccinated by age 2.

Childhood environment

Local breastfeeding initiation rates are 87.6% compared to 80.7% in Somerset. Continuation rates at 6-8 weeks are 52.3% compared to 49.4% in the county as a whole.

Excess weight

According to the underlying model used to assess appropriate childhood weight, only 15% children should be of excess weight. Somerset rates are 22.4% at age 4-5 years and 30.4% at age 10. For this Commissioning Locality, estimated rates are 22.3% and 30.2% for each age group. The percentage of adults in the area who are obese is 10.5% which is about average for the county.

Smoking

The Commissioning Locality has 13.2% of adults over age 16 recorded as smokers compared to a 12.8% Somerset average. However, adult smoking rates have increased slightly in this locality compared to declines in all other localities. In 2015/16, only 35 per 1000 recorded smokers in West Somerset went through cessation services compared to 81 per 1000 in 2013-15. This is a lower than average proportion compared to other Commissioning Localities and this number is dramatically down in absolute terms.

Drugs and Alcohol

Hospital admissions for drug and alcohol related reasons are similar to the Somerset average. Alcohol related admissions: West Somerset 1,833 per 100,000; Somerset 1,894 per 100,000. Drug related admissions: West Somerset 140 per 100,000; Somerset 137 per 100,000.

Hospital admission rates

To focus on a few indicators, the emergency admission rate for falls in the over

65s is 26 per 1000 as compared to the Somerset average of 31 per 1000. The self-harm admission rate is 206 per 100,000 which is about average for the county..

Suggested public health priority areas

- Be aware of possible missed cases of dementia.
- Integrate offering chlamydia screening tests within general practice
- Increase cancer screening rates

9.1.3 Details of GP surgeries

Code	Name	Address		Post code	Dispensing	Prescribing	Total
L85003	Exmoor Medical Centre	Oldberry House, Fishers Mead	Dulverton	TA22 9EN	2,673	1,191	3,864
L85065	Dunster Surgery	The Surgery, 3 Park Street	Dunster	TA24 6SR	2,794	1,095	3,889
L85019	Harley House Surgery	2 Irnham Road	Minehead	TA24 5DL	0	6,964	6,964
L85041	Irnham Lodge Surgery	Townsend Road	Minehead	TA24 5RG	0	6,630	6,630
L85608	Porlock Medical Centre		Porlock	TA24 8PJ	0	1,986	1,986
L85009	West Somerset Healthcare	Williton Surgery, Robert St	Williton, Taunton	TA4 4QE	0	10,112	10,112

Since the 2015 PNA, Brendon Hills dispensing practice has merged with Dunster Surgery, with patients being served from there.

9.1.4 Housing Development

Table 1: West Somerset - Significant housing developments 2018-20 – expected number of dwellings

Location	Total	Site (over 100)	Number
Minehead	400		
		<i>North Callins</i>	<i>135</i>
Watchet	120		
Rest of Locality	450		
Total	970		
May be slight overestimate because of boundary with North Sedgemoor			

The scale of development in the West Somerset commissioning locality is generally less than the rest of the county, and especially so in Exmoor National Park. A large proportion of the growth is expected to be in Minehead, which is already the main town. The scale of development during this PNA is not, in itself, sufficient to create a gap in provision. The scale of development in other settlements is not expected to create a gap in provision during this period.

9.1.5 Necessary services: current provision

Pharmacy

Code	Contract Name	Trading Name	Address	Post-code	100 Hour	Electronic Prescription Service available	Access to Summary Care Record	NHSmail address as at 2-6-17	Number of prescription fees paid	Of which items on electronic prescriptions	Elastic Hosiery items
FQK41	Medevala Pharma Ltd	Dulverton Pharmacy	21 High Street, Dulverton	TA24 5UG	No	Yes	Yes	Yes (NUMSAS OK)	48475	28140	0
FE699	Boots UK Ltd	Boots pharmacy	14-16 The Parade, Minehead	TA24 6BD	No	Yes	Yes		76535	56183	0
FP116	John Ware Ltd	Alcombe pharmacy	65 Alcombe Road, Minehead	TA24 5RG	No	Yes	Yes	Yes (NUMSAS OK)	82037	63766	0
FNG86	Lloyds Pharmacy Ltd	Lloyds pharmacy	Baytree House, Townsend Road, Minehead	TA24 5BY	No	Yes	Yes	Yes (NUMSAS OK)	150317	114208	2
FDR89	Tesco Stores Ltd	Tesco pharmacy	Seaward Way, Minehead	TA24 8PT	Yes	Yes	Yes		18171	10162	0

FNW91	John Ware Ltd	Porlock pharmacy	High Street, Porlock	TA23 0AB	No	Yes	Yes	Yes (NUMSAS OK)	55152	52064	0
FF074	Preddy Newco Ltd	Quantock pharmacy	11 Swain Street, Watchet	TA4 4QE	No	Yes	Yes	Yes (NUMSAS OK)	85633	68391	0
FK106	Lloyds Pharmacy Ltd	Lloyds pharmacy	Williton surgery, Robert Street, Williton	TA22 9HB	No	Yes	Yes	Yes (NUMSAS OK)	116234	57874	8

Dispensing Appliance Contractors

None

Dispensing doctors

Practice Code	Practice Name	Address	Postcode	Opening Hours	Type
L85003	Exmoor Medical Centre	Oldberry House, Fishers Mead, Dulverton	TA22 9EN	Monday-Friday, 8.30-13.00, 14.00-18.00	dispensing GP practice
L85065	Dunster Surgery	The Surgery, 3 Park Street, Dunster	TA24 6SR	Monday- Friday 8.00-18.00	dispensing GP practice

Notable provision from outside the locality

Most provision is likely to be within the locality.

Pharmacies and Items per head

	Number	Regd Patients	Per 10,000	Items dispensed	Items per head
Pharmacies	8	27,978	2.9	632,554	22.6
Doctors' dispensaries	2	5,467	3.7	123,780	22.6
West Somerset total	10	33445	3.0	756,334	22.6
Somerset total	127	568159	2.2	10,862,687	19.1

The numbers of pharmacies, total outlets and the number of items dispensed per head are higher than the county average, which reflects the additional number needed to serve the dispersed population and tourists, and the elderly age structure. It should be noted that these are indicative, as dispensing practices' and pharmacies' prescribing is not identical; dispensing patients can also use community pharmacies; and there is no requirement for a particular number of pharmaceutical providers per head.

Transport/access assessment

The population weighted score for the locality on the Barriers to Housing and Services domain of the Index of Multiple Deprivation is 28.9 compared to a Somerset average of 25.2, making it more deprived than the Somerset average on this basis.

Opening hours coverage

West Somerset – Weekday opening

	24 hrs	1	2	3	4	5	6	7	8	9	10	11	12	13	14	15	16	17	18	19	20	21	22	23	24
Dulverton																									
Dulverton Pharmacy, 21 High Street	FQK41										●	●	●	●	◐	●	●	●	◐						
Exmoor Medical Centre	L85003									◐	●	●	●	●		●	●	●	●						
Dulverton	Core	None									At least one				At least one				None						
	Total	None									At least one										None				
Dunster																									
Dunster Surgery	L85065									●	●	●	●	●	●	●	●	●	●						
Minehead																									
Boots UK Ltd, 14-16 The Parade, Minehead	FE699										●	●	●	●	◐	◐	●	●	◐						
John Ware Ltd, 65 Alcombe Road, Minehead	FP116										●	●	●	●	●	●	●	●	●						
Lloyds pharmacy, Townsend Road,	FNG86										●	●	●	◐	◐	◐	●	●	◐						

	24 hrs	1	2	3	4	5	6	7	8	9	10	11	12	13	14	15	16	17	18	19	20	21	22	23	24
Minehead																									
Tesco pharmacy, Seaward Way, Minehead	FDR89							◐	●	●	●	●	●	●	●	●	●	●	●	●	●	●	●	◐	
Minehead	Core	None							At least one															None	
	Total	None							At least one															None	
Porlock																									
Porlock pharmacy, High Street,	FNW91									◐	●	●	●	●		●	●	●	●						
Watchet																									
Quantock pharmacy, 11 Swain Street	FF074									◐	●	●	●	●	◐	●	●	●	●	◐					
Williton																									
Lloyds pharmacy, Williton surgery, Robert Street	FK106										●	●	●	◐	◐	●	●	●	●	●	◐				
West Somerset	Core	None							At least one															None	
	Total	None							At least one															None	
	24 hrs	1	2	3	4	5	6	7	8	9	10	11	12	13	14	15	16	17	18	19	20	21	22	23	24

West Somerset – Saturday opening

	24 hrs	1	2	3	4	5	6	7	8	9	10	11	12	13	14	15	16	17	18	19	20	21	22	23	24
Dulverton																									
Dulverton Pharmacy, 21 High Street	FQK41										●	●	●	●	●	●	●	●							
Exmoor Medical Centre	L85003																								
Dulverton	Core																								
	Total																								
Dunster																									
Dunster Surgery	L85065																								
Minehead																									
Boots UK Ltd, 14-16 The Parade, Minehead	FE699										◐	●	●	●	●	◑	◑	●	●	◐					
John Ware Ltd, 65 Alcombe Road, Minehead	FP116										●	●	●	●											
Lloyds pharmacy, Townsend Road, Minehead	FNG86										◑	●	●	●											

	24 hrs	1	2	3	4	5	6	7	8	9	10	11	12	13	14	15	16	17	18	19	20	21	22	23	24
Tesco pharmacy, Seaward Way, Minehead	FDR89							◐	●	●	●	●	●	●	●	●	●	●	●	●	●	●			
Minehead	Core	None							At least one															None	
	Total	None							At least one															None	
Porlock																									
Porlock pharmacy, High Street,	FNW91										●	●	●	●											
Watchet																									
Quantock pharmacy, 11 Swain Street	FF074										●	●	●	●	◐	●	◐	●							
Williton																									
Lloyds pharmacy, Williton surgery, Robert Street	FK106										◐	●	●	◐											
West Somerset	Core	None							At least one															N	
	Total	None							At least one															N	
	24 hrs	1	2	3	4	5	6	7	8	9	10	11	12	13	14	15	16	17	18	19	20	21	22	23	24

West Somerset – Sunday opening

	24 hrs	1	2	3	4	5	6	7	8	9	10	11	12	13	14	15	16	17	18	19	20	21	22	23	24
Dulverton																									
Dulverton Pharmacy, 21 High Street	FQK41																								
Exmoor Medical Centre	L85003																								
Dulverton	Core																								
	Total																								
Dunster																									
Dunster Surgery	L85065																								
Minehead																									
Boots UK Ltd, 14-16 The Parade, Minehead	FE699										●	●	●	●	●	●	●								
John Ware Ltd, 65 Alcombe Road, Minehead	FP116																								
Lloyds pharmacy, Townsend Road, Minehead	FNG86																								
Tesco	FDR89											●	●	●	●	●	●								

	24 hrs	1	2	3	4	5	6	7	8	9	10	11	12	13	14	15	16	17	18	19	20	21	22	23	24
pharmacy, Seaward Way, Minehead																									
Minehead	Core	None										At least one						None							
	Total	None										At least one						None							
Porlock																									
Porlock pharmacy, High Street,	FNW91																								
Watchet																									
Quantock pharmacy, 11 Swain Street	FF074																								
Williton																									
Lloyds pharmacy, Williton surgery, Robert Street	FK106																								
West Somerset	Core	None										At least one						None							
	Total	None										At least one						None							
	24 hrs	1	2	3	4	5	6	7	8	9	10	11	12	13	14	15	16	17	18	19	20	21	22	23	24

Key to Opening Hours diagrams

Community Pharmacies

- Open for whole hour - Core
- ◐ Open for first part of hour (usually 30 minutes) - Core
- ◑ Open for second part of hour (usually 30 minutes) - Core
- Open for whole hour – Supplementary
- ◐ Open for first part of hour (usually 30 minutes) – Supplementary
- ◑ Open for second part of hour (usually 30 minutes) - Supplementary

Dispensing GP Practices

- Open for whole hour, all or most weekdays
- ◐ Open for first part of hour (usually 30 minutes), all or most weekdays, or Saturday
- ◑ Open for second part of hour (usually 30 minutes), all or most weekdays, or Saturday
- Open for whole hour, minority of days per week
- ◐ Open for first part of hour (usually 30 minutes), minority of days per week
- ◑ Open for second part of hour (usually 30 minutes), minority of days per week

These diagrams are simplifications of sometimes complex opening times, in which several days in a week may have their own schedules. The definitive list of opening times is shown in Appendix 5.

Advanced Services and Locally Commissioned Services (Somerset CC Public Health and Somerset CCG)

Pharmacy	Contractor	Address1	Medicines Use Reviews	New Medicines Service interventions	Appliance Use Reviews	Stoma Appliance Customisations	Fees for appliances requiring home delivery	Appliances requiring measuring and fitting	Flu Vaccinations	Specialist Medicines Enhanced Service	Supervised Admin of Medication	Emergency Hormonal Contraception 16-17	Chlamydia screening	Needle exchange	NHS health checks	Smoking Cessation (Champix)	Smoking Cessation (1:1 support)	Minor Ailments Service
Dulverton Pharmacy	FQK41	21 High Street, Dulverton	●	●			●		●		●	●				●	●	●
Boots UK Ltd,	FE699	14-16 The Parade, Minehead	●	●			●	●	●		●	●	●	●		●		●
John Ware Ltd,	FP116	65 Alcombe Road, Minehead	●				●	●	●		●	●		●		●		●
Lloyds pharmacy,	FNG86	Townsend Road, Minehead	●	●		●	●				●	●						●

Tesco pharmacy	FDR89	Seaward Way, Minehead	●	●			●		●	●	●	●	●			●	●	●
Porlock pharmacy,	FNW91	High Street, Porlock	●				●	●	●		●	●						●
Quantock pharmacy	FF074	11 Swain Street, Watchet	●	●			●	●	●		●	●	●			●		●
Lloyds pharmacy Williton surgery	FK106	Robert Street, Williton	●	●		●	●	●	●		●	●				●		●
Locality																		

Hospital pharmacies, walk-in centres, private pharmacies

There is a community hospital and minor injuries unit in Minehead, and a community hospital in Williton.

9.1.6 Necessary services: gaps in provision

Despite the elderly age structure of the population, the health needs of the West Somerset Commissioning Locality are broadly comparable to the county average. The sparsity of population makes providing services to the rural parts more difficult, and this is reflected in the larger number of providers per head in this locality.

The 2015 Somerset PNA did not identify a gap in the provision of necessary services in the locality, and the relatively small population change since then has not created a gap.

During the week, the population is served from 6.30AM to 10.30PM by core hour opening. On Saturdays the core hour opening is from 6.30AM to 10PM; Sunday core hours are from 10AM to 4PM. None of these times are extended by supplementary hours, but does reflect very lengthy availability from Monday to Saturday and reasonable hours on Sunday, albeit dependent upon the 100 hour pharmacy at Tesco in Minehead.

All pharmacies in the locality provide MURs and all but two provide NMS. Two pharmacies provide the access to specialist medicines enhanced service.

On the basis of the information we have, we therefore conclude that there is no current gap in the provision of necessary services in West Somerset.

The level of housebuilding expected in the next three years is lower than the county as a whole, with a concentration in Minehead, which is already well served. We do not consider that the scale or location of development will in themselves create gaps in provision.

On the basis of the information we have, we conclude that if the expected level of development in West Somerset takes place then there will be no gap in provision of necessary services.

Improvements or better access: gaps in provision

We note that all advanced services, apart from Appliance Use Reviews, are provided in the locality. We do not have evidence that the lack of Appliance Reviews is the result of their absence or a lack of demand. We note that AURs are available in West Somerset from visits by Dispensing Appliance Contractors, and from Acute Hospital trusts. All locally commissioned services are available within the locality.

On the basis of the information we have, we do not assess there to be a current gap in other relevant services in West Somerset.

The growth in population will not create demand for any entirely new service.

On the basis of the information we have, we do not assess there to be a future gap in other relevant services.