

Chapter 5: Employment

Key facts

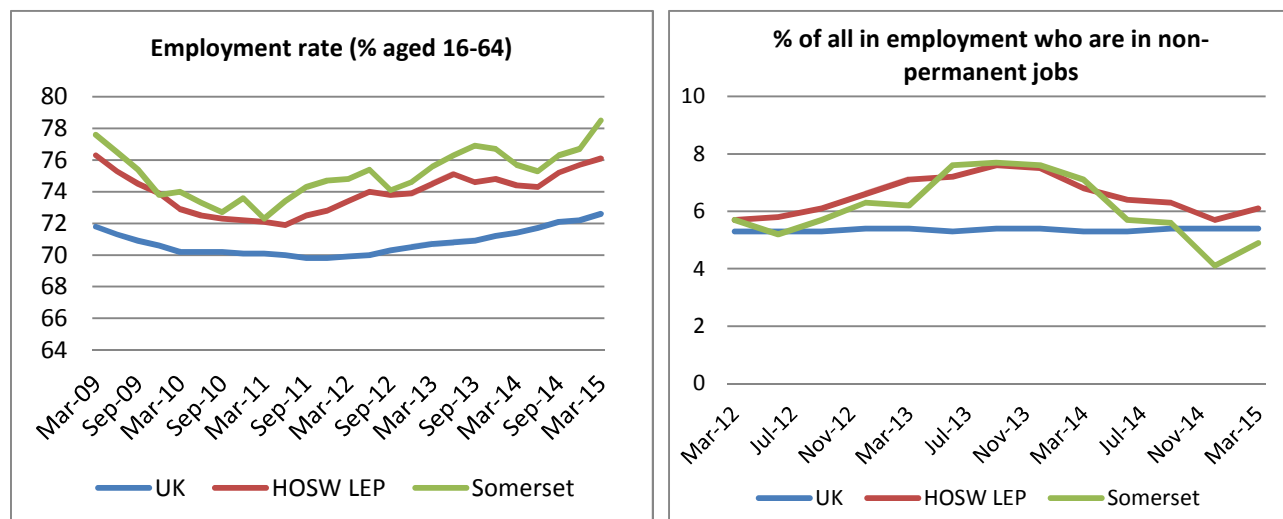
- Somerset has a higher employment rate than the UK overall (78.5% compared to 72.6%).
- 12,700 people in Somerset were employed in non-permanent jobs (4.9% of all those in employment).
- Somerset has higher levels of self-employment than the UK (17.5% compared to 14.7%). The proportion of people in the County who are self-employed has increased by 20% since 2009.

National context

- According to the Office for National Statistics⁸, there were 30.98 million people in work in May 2015. This was 67,000 fewer than for the 3 months to February 2015, the first quarterly fall since February to April 2013. Comparing March to May 2015 with a year earlier, there were 265,000 more people in work (272,000 more people working full-time and 7,000 fewer people working part-time).
- Self-employment⁹ is higher than at any point over past 40 years and the rise in total employment since 2008 is predominantly among the self-employed. Self-employed workers tend to be older than employees and are more likely to work more (over 45) or fewer (8 or less) hours.

Somerset Overview

Employment



Source: Annual Population Survey, NOMIS 2015

Employment rate

- In March 2015, 78.5% of Somerset's population aged 16-64 were in employment, a higher rate than both the nationally and across the LEP area (72.6% and 76.1% respectively). Employment rates dipped during 2010 and 2011 in the aftermath of the economic downturn but have been rising steadily since.

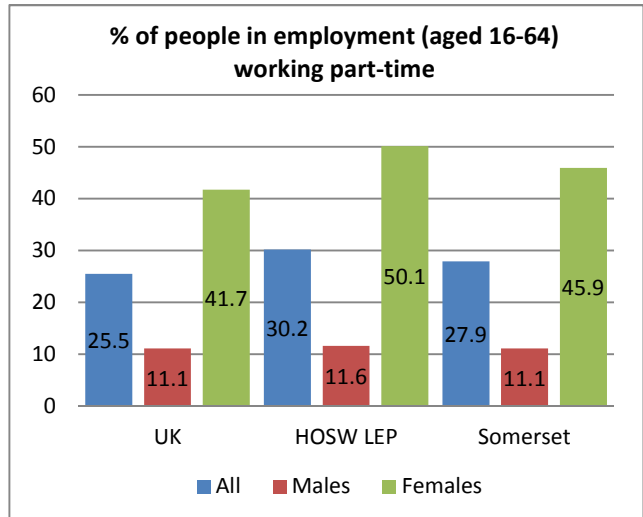
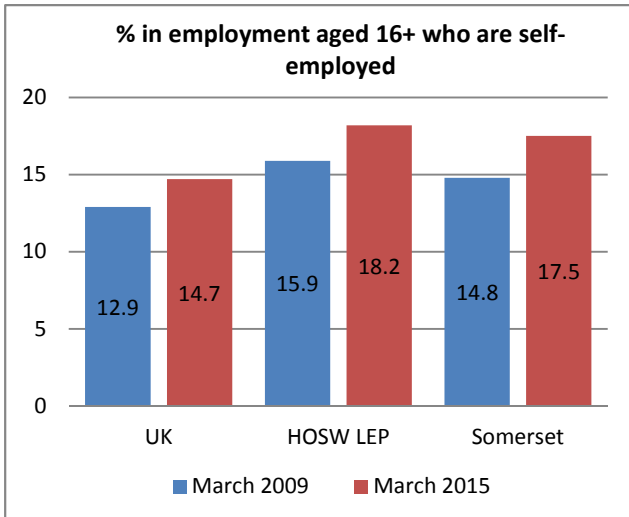
Non-permanent employment

- In March 2015, 12,700 people in Somerset were employed in non-permanent jobs (4.9% of all those in employment). This is a decrease from its peak of 7.7% in September 2013. Some temporary employment is likely to be seasonal (i.e. summer and Christmas) but the trend does not support this as the only factor. Businesses adjusting to uncertain financial and market conditions may use temporary contracts. Interestingly, this pattern is reflected at national level, where the rate remained constant.

⁸ UK Labour Market, July 2015, ONS

⁹ Self-employed workers in the UK 2014, ONS

Working patterns



Source: Annual Population Survey, NOMIS 2015

Self-employment

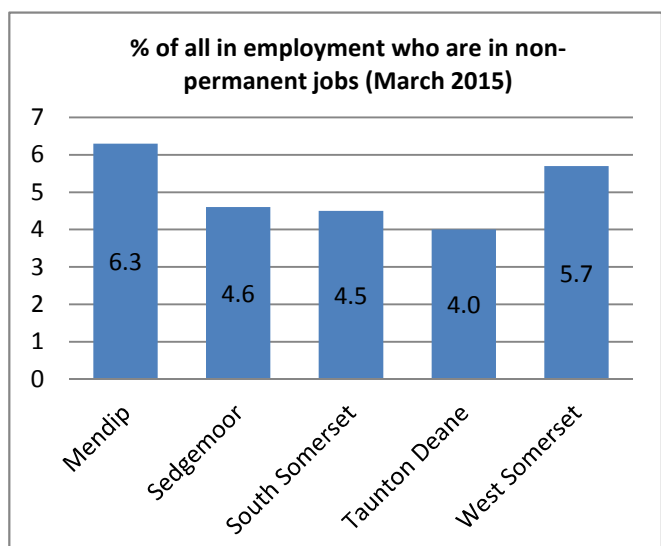
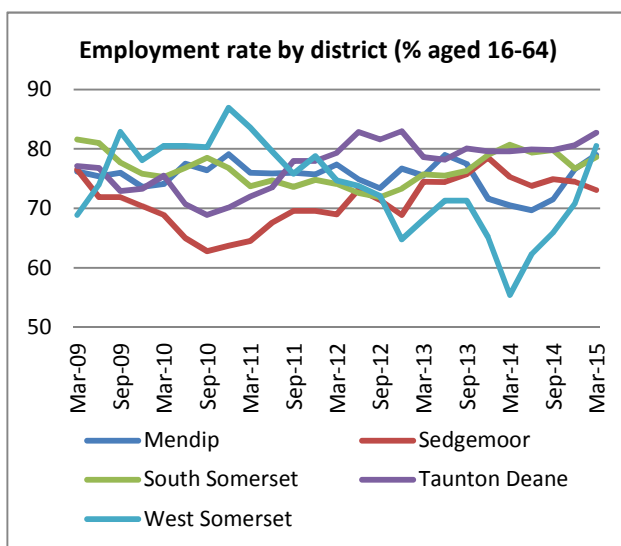
- Rates of self-employment are increasing across Somerset, the LEP area and nationally. In March 2015, 45,800 people in Somerset were self-employed, an increase of 7,600 from March 2009 (+20%). Somerset has higher levels of self-employment than the UK (17.5% compared to 14.7%) but the LEP area exceeds this at 18.2%.

Part-time working

- 27.9% of Somerset's workforce work part-time; a higher level than nationally (25.5%) but lower than the LEP area (30.2%). This represents a slight decline from a recent peak in the County of 32.9% in December 2013. Considered in conjunction with rates of non-permanent employment above, the figures indicate a period of slightly decreased labour market stability during 2013, with more part-time and temporary employment either by choice or necessity. A much higher proportion of women than men work part-time across all the 3 geographical areas, a trend that has persisted over time.

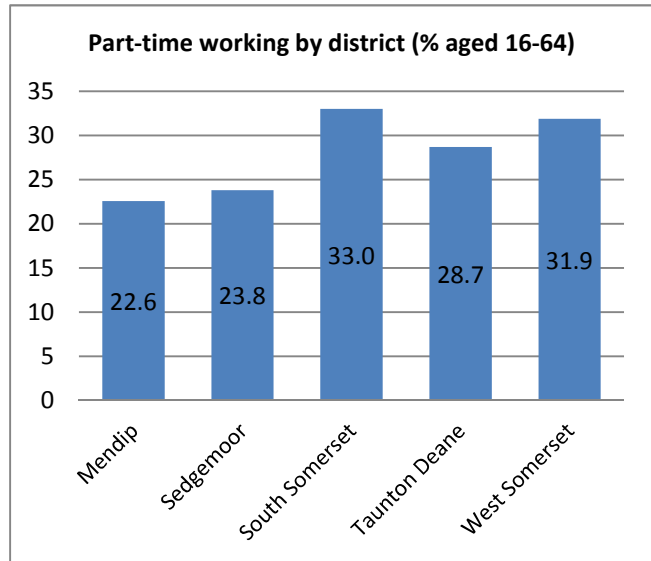
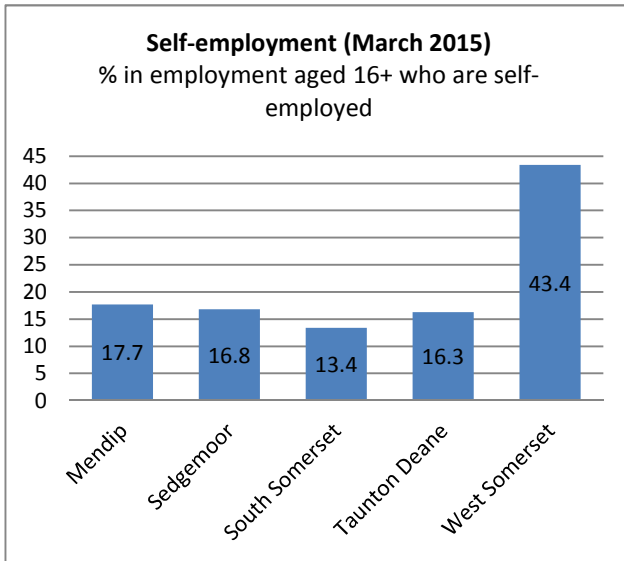
Local trends (Districts)

Employment



Source: Annual Population Survey, NOMIS 2015

Working patterns



Source: Annual Population Survey, NOMIS 2015

- Taunton Deane currently has the highest employment rate of all the districts in Somerset (82.7%) and Sedgemoor has lowest (73.1%) but rates have fluctuated over time and there is no clear pattern. West Somerset has seen greatest increase in employment rates since 2009 (+11.6%) whereas Sedgemoor shows the greatest decrease (-3.4%).
- Mendip and West Somerset have highest proportions of their workforce in non-permanent roles as at March 2015 (6.3% and 5.7% respectively). Rates of non-permanent employment have fallen since 2012 for all Somerset districts (data not available for West Somerset).
- 43.4% of West Somerset's workforce is self-employed, more than double the proportion of the other districts. Levels of self-employment have increased in all the districts since 2009 but Sedgemoor has seen the greatest rise (+7.3%).
- Part-time working is most prevalent in South Somerset and West Somerset, with 33% and 31.9% respectively of the workforce employed in this way. Since 2009, these two areas have seen an increase in levels of part-time working whilst the other three districts have seen a decrease. These rates are substantially higher than the 25.5% of people who work part-time across the UK and Somerset (27.9%).

DATA TABLES Chapter 5: Employment

Employment rate (% aged 16-64)

	UK	HOSW LEP	Somerset	Mendip	Sedgemoor	South Somerset	Taunton Deane	West Somerset
Mar-09	71.8	76.3	77.6	76.2	76.5	81.6	77.1	68.9
Mar-10	70.2	72.9	74.0	74.1	68.9	75.3	75.5	80.5
Mar-11	70.1	72.1	72.3	76.0	64.5	73.7	72.0	83.6
Mar-12	69.9	73.4	74.8	77.4	69.0	74.1	79.3	74.7
Mar-13	70.7	74.5	75.6	75.5	74.5	75.7	78.6	68.1
Mar-14	71.4	74.4	75.7	70.5	75.3	80.7	79.6	55.4
Mar-15	72.6	76.1	78.5	79.0	73.1	78.6	82.7	80.5
Change 2009-15	0.8	-0.2	0.9	2.8	-3.4	-3.0	5.6	11.6

% of residents in employment aged 16+ who are self-employed

	UK	HOSW LEP	Somerset	Mendip	Sedgemoor	South Somerset	Taunton Deane	West Somerset
Mar-09	12.9	15.9	14.8	17.5	9.5	11.4	16.2	38.7
Mar-10	13.4	15.0	13.7	15.9	9.6	11.8	12.7	31.8
Mar-11	13.6	16.3	14.6	16.4	13.5	14.8	11.7	20.2
Mar-12	14.1	16.5	15.9	18.5	14.2	17.7	9.6	27.3
Mar-13	14.2	17.2	16.8	17.0	13.6	17.8	15.2	29.7
Mar-14	14.6	17.9	17.4	16.9	18.1	19.1	9.6	40.4
Mar-15	14.7	18.2	17.5	17.7	16.8	13.4	16.3	43.4
Change 2009-15	1.8	2.3	2.7	0.2	7.3	2.0	0.1	4.7

% of employed residents in non-permanent employment (aged 16-64)

	UK	HOSW LEP	Somerset	Mendip	Sedgemoor	South Somerset	Taunton Deane	West Somerset
Mar-12	5.3	5.7	5.7	7.4	5.1	5.9	5.2	N/A
Jun-12	5.3	5.8	5.2	5.1	3.1	5.4	7.9	N/A
Sep-12	5.3	6.1	5.7	4.5	5.9	5.1	8.3	N/A
Dec-12	5.4	6.6	6.3	3.5	6.4	7.8	8.0	N/A
Mar-13	5.4	7.1	6.2	4.2	6.3	7.8	7.5	N/A
Jun-13	5.3	7.2	7.6	5.6	7.7	9.6	8.4	N/A
Sep-13	5.4	7.6	7.7	8.0	6.2	10.0	7.5	N/A
Dec-13	5.4	7.5	7.6	10.2	5.6	7.9	8.3	N/A
Mar-14	5.3	6.8	7.1	8.3	5.6	7.1	8.7	N/A
Jun-14	5.3	6.4	5.7	7.1	6.0	4.7	5.9	N/A
Sep-14	5.4	6.3	5.6	5.3	5.8	4.5	7.7	N/A
Dec-14	5.4	5.7	4.1	2.8	4.7	4.1	4.5	5.0
Mar-15	5.4	6.1	4.9	6.3	4.6	4.5	4.0	5.7
Change 2012-15	0.1	0.4	-0.8	-1.1	-0.5	-1.4	-1.2	N/A

% in employment (aged 16-64) working part-time

	UK	HOSW LEP	Somerset	Mendip	Sedgemoor	South Somerset	Taunton Deane	West Somerset
Mar-09	24.6	29.6	28.7	31.8	27.7	25.6	32.1	26.4
Mar-10	25.5	31.0	30.3	28.1	30.8	25.0	37.5	37.8
Mar-11	25.8	30.3	27.8	32.2	22.1	23.3	30.9	41.5
Mar-12	25.9	29.6	27.9	31.3	27.3	22.3	31.3	33.3
Mar-13	25.8	29.3	29.7	33.5	27.7	27.8	30.4	31.3
Mar-14	25.6	30.5	32.8	33.8	32.4	33.4	32.4	27.3
Mar-15	25.5	30.2	27.9	22.6	23.8	33.0	28.7	31.9
Change 2009-15	0.9	0.6	-0.8	-9.2	-3.9	7.4	-3.4	5.5

Source: Annual Population Survey, NOMIS 2015