

**LOCAL CHOICES Somerset:**

**DID YOU KNOW...?!**

[WWW.SOMERSET.GOV.UK](http://WWW.SOMERSET.GOV.UK)

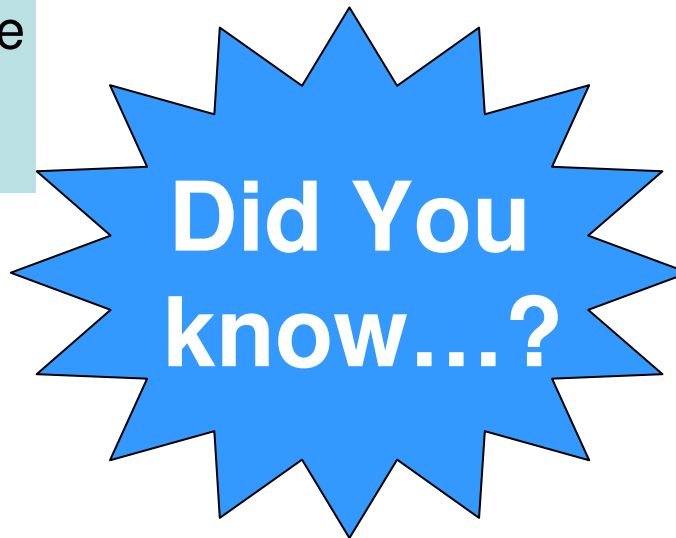




534,950 people  
live in Somerset

The % of households  
renting privately rose  
from 9% in 2001  
to 15% in 2011

Projected to reach  
569,000 by 2021



13,770 children  
live in poverty

Most of the rise is  
caused by people  
moving here from  
other parts of the UK

Almost 2 in 3 homes in  
Somerset have  
3 or more bedrooms

Somerset women are  
having children at  
younger age than  
the UK average

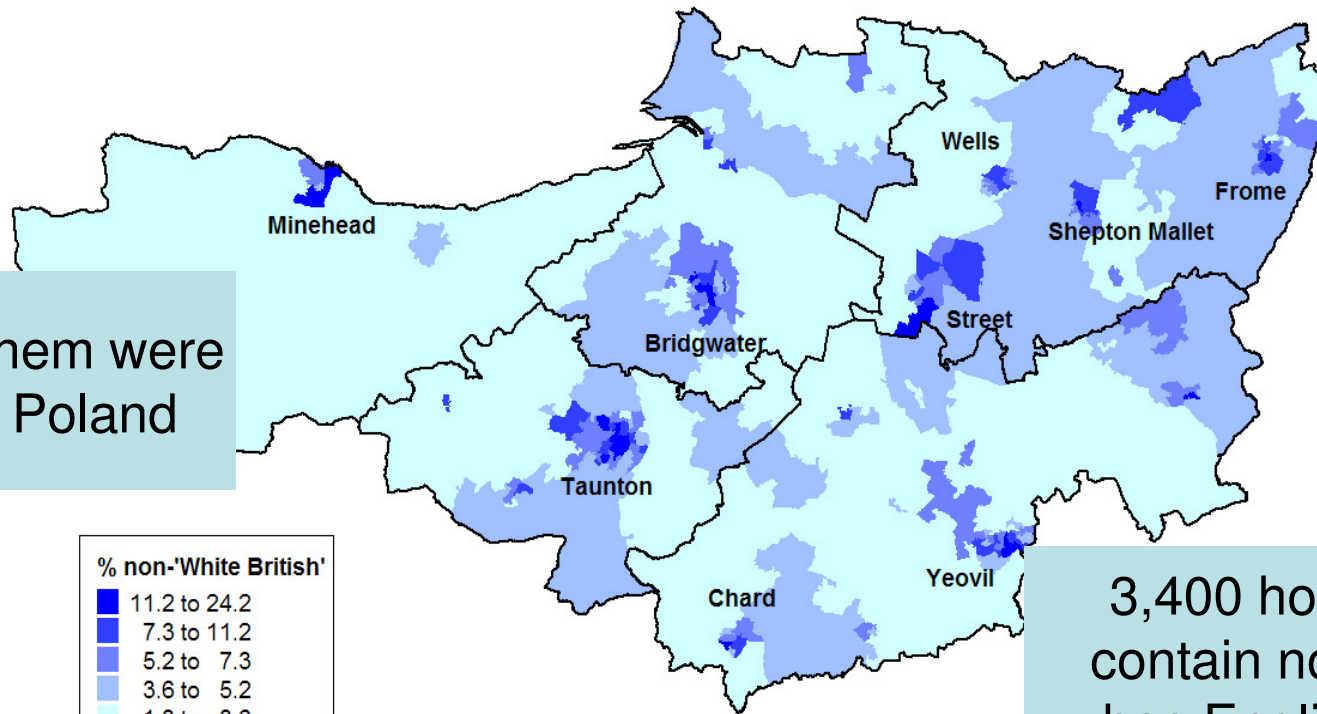
1 in 4 households  
contain only people  
aged 65 or more

31,761 Somerset residents were born outside the UK



**Somerset Intelligence**

### Relative concentrations of non-White British



1 in 6 of them were born in Poland

% non-'White British'	
Dark Blue	11.2 to 24.2
Medium-Dark Blue	7.3 to 11.2
Medium Blue	5.2 to 7.3
Light Blue	3.6 to 5.2
Very Light Blue	1.3 to 3.6

3,400 households contain nobody who has English as their main language

National Insurance no. registrations are down by 31% since 2005-6

[WWW.SOMERSET.GOV.UK](http://WWW.SOMERSET.GOV.UK)





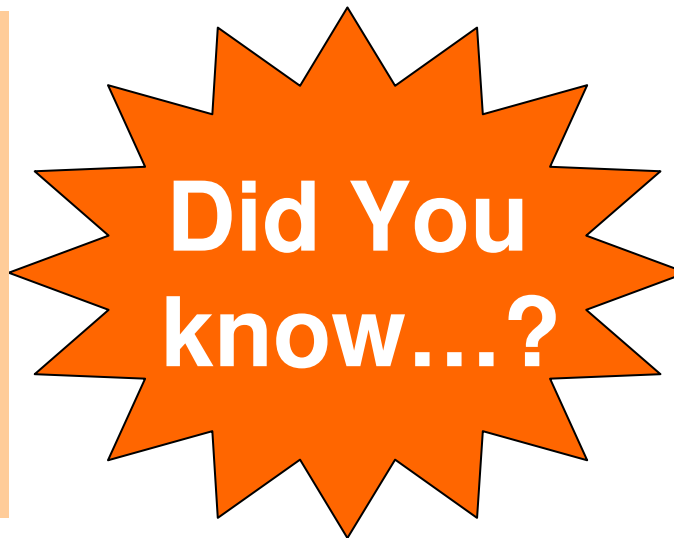
**Somerset  
Intelligence**

Life expectancy at birth  
in Somerset is higher  
than average:  
80 for men, 83 for women

1 in 20 Somerset people  
describe their health  
as bad or very bad

Somerset is worse than  
England average for:-

Smoking in pregnancy  
Adult obesity  
Malignant melanoma  
Alcohol-specific hospital  
admissions for under 18s



Somerset is better than  
England average for:-  
Smoking-related deaths,  
Early deaths caused by  
cancer and strokes  
Low teenage  
pregnancy rates

Estimated to be 1,750  
young carers aged 5-13  
in Somerset

SCC commissions or  
provides social care  
for over 28,000  
adult clients

[WWW.SOMERSET.GOV.UK](http://WWW.SOMERSET.GOV.UK)



# Dementia



**Somerset  
Intelligence**

3,680 people are  
registered with dementia  
in Somerset

Observed numbers of  
dementia patients up  
by a half since 2008 –  
result of improved  
detection and recording

**Did You  
know...?**

Actual number  
is estimated to be  
more than 8,000

Number with dementia  
is projected to reach  
11,000 by 2020

Number of Somerset  
residents aged 65+  
Is projected to rise  
by 30% by 2021

[WWW.SOMERSET.GOV.UK](http://WWW.SOMERSET.GOV.UK)





The Somerset economy  
is worth over £9 billion

Somerset has a below  
average % of 16-64s  
with degree or equivalent

At 4.3% , Somerset's  
unemployment rate is  
much lower than the  
national average (8%)

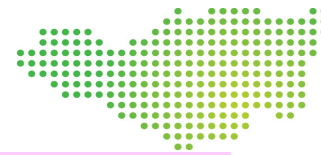
But 2,000 more 16-24s  
move away than  
into the county



Average earnings  
are 7.3% below the  
national average

2,370 more people move  
to Somerset from other  
areas than move away

Of those unemployed, the % who  
are long-term or have never worked  
rose from 31% in 2001 to 47% in 2011



**Somerset  
Intelligence**

More than 14 cars or vans  
are available for every 10  
households in Somerset

Bus passenger journeys  
are declining. Somerset  
has the lowest figure per  
population in the SW

1 in 6 households have  
no access to car or van,  
up to 30% in towns

**Did You  
know...?**

Railway station passengers  
have increased in the  
past three years,  
especially at Frome

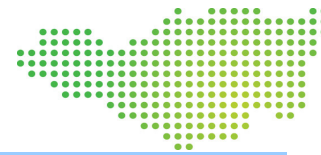
Road traffic volumes rose  
sharply after 2000, but  
have fallen since 2008

3 in 5 Somerset working  
adults go to work by car or van,  
above national average

[WWW.SOMERSET.GOV.UK](http://WWW.SOMERSET.GOV.UK)



# Welfare Reform



**Somerset  
Intelligence**

More than 16,277 active applicants are on the social housing register

The 4 wards with the highest JSA claimant rates in Somerset are all in Bridgwater

42,746 households receive help towards Council Tax payments in the form of benefits

**Did You know...?**

Welfare reforms estimated to reduce spending in Somerset by £139m

38,000 Somerset people receive Housing Benefit – total payments £143m

% of owner-occupiers amongst 16-34 age group dipped from 57% in 2001 to 37% in 2011

[WWW.SOMERSET.GOV.UK](http://WWW.SOMERSET.GOV.UK)





**Somerset  
Intelligence**

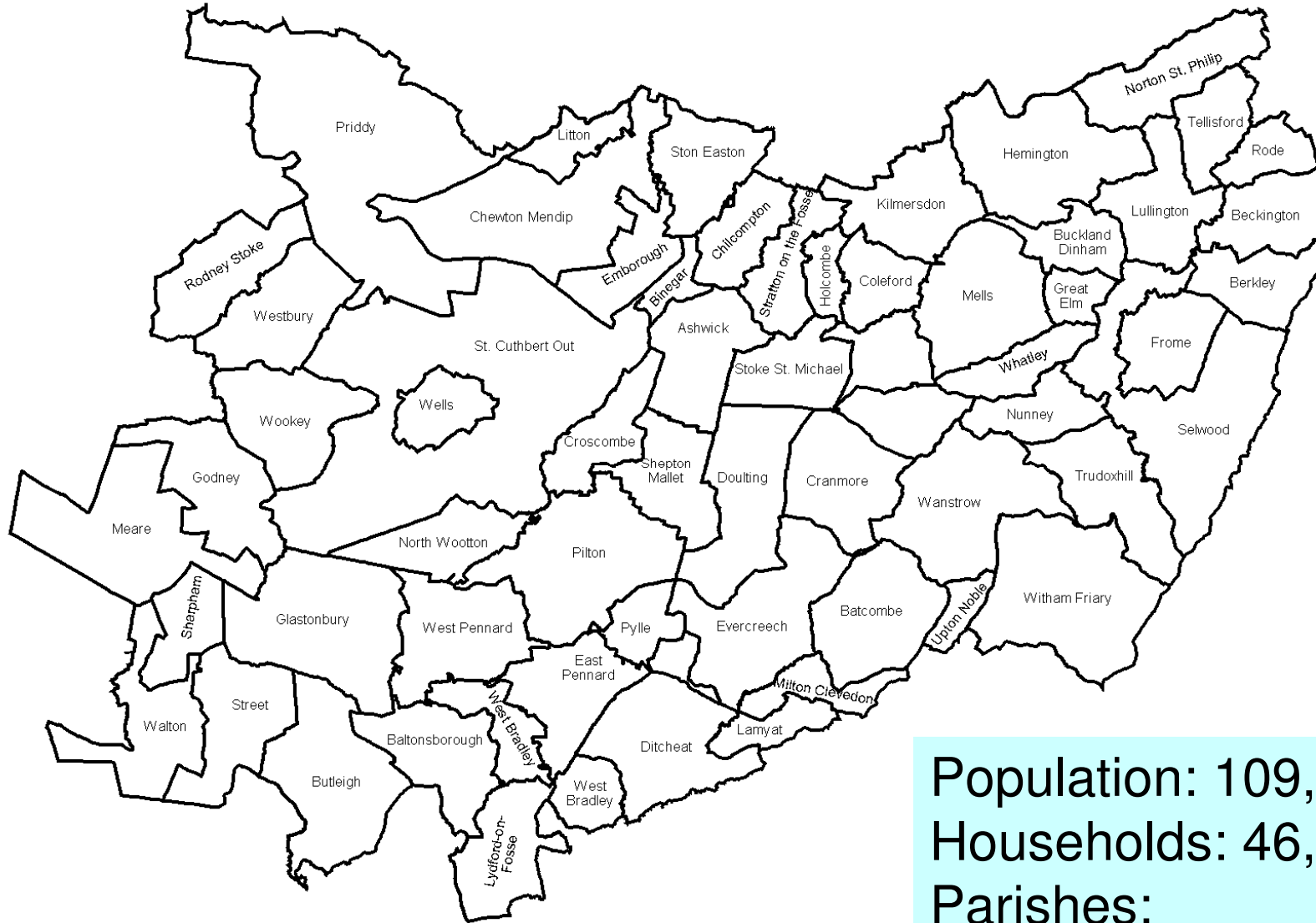
# District Sections

[WWW.SOMERSET.GOV.UK](http://WWW.SOMERSET.GOV.UK)





# Mendip Parishes



Population: 109,938  
Households: 46,210  
Parishes: 63





1 in 3 Mendip residents  
work outside the district,  
mostly in BaNES

Mendip has the highest %  
of working age residents  
qualified to NVQ4 or above

Mendip has the  
highest average  
house sale  
price in Somerset  
(£218,591)

Stratton-on-the-  
Fosse has the 2nd  
youngest parish  
population in  
the county

## MENDIP

Shepton Mallet North  
has the highest % in  
the White Other ethnic  
group in Somerset

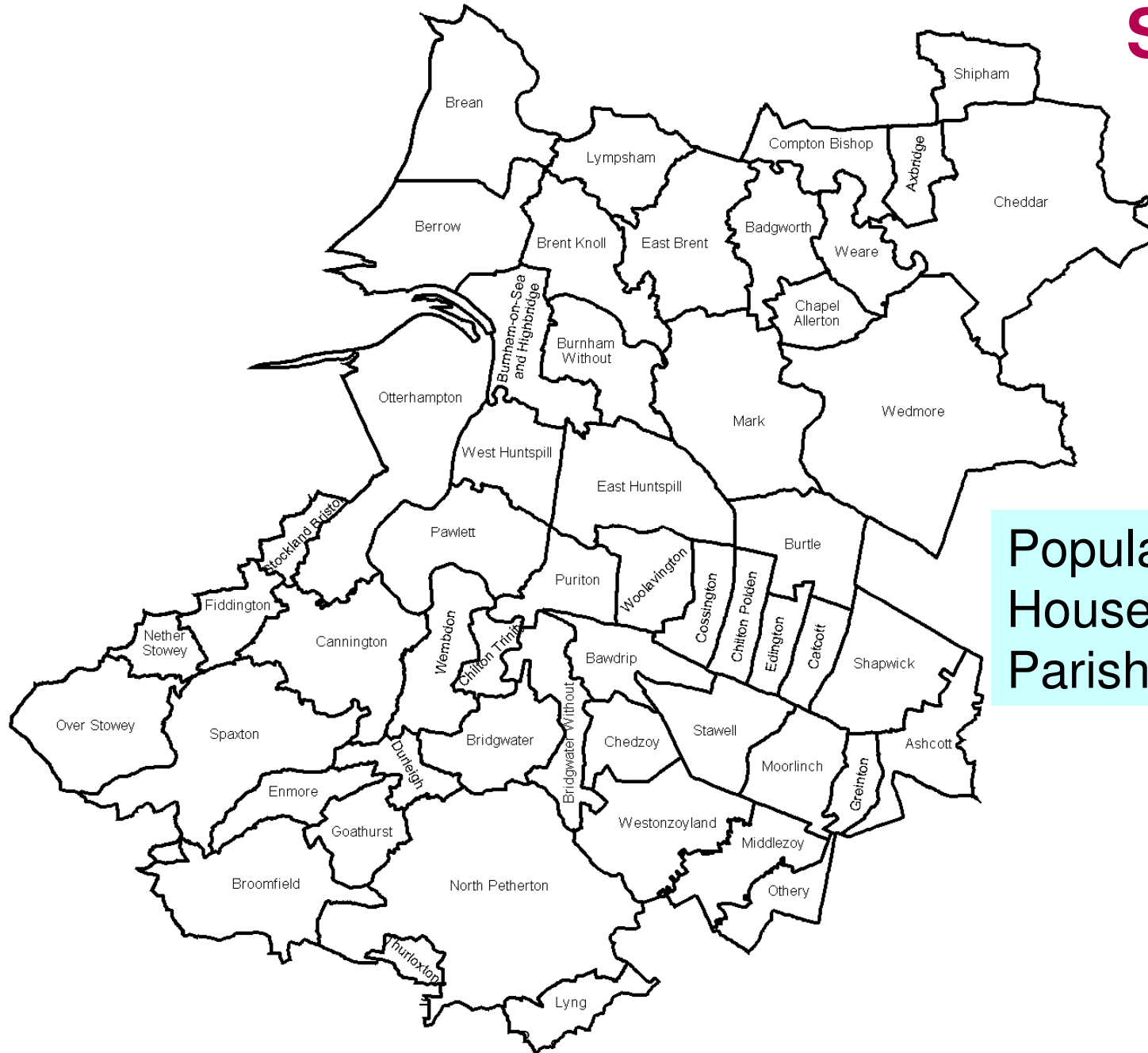
Mendip has the highest  
% in the country for  
Paganism,  
Shamanism and the  
Druid religion

Over a third of Somerset's  
Gypsy & Traveller  
population live in Mendip

[WWW.SOMERSET.GOV.UK](http://WWW.SOMERSET.GOV.UK)



# Sedgemoor Parishes



Population: 116,071  
Households: 48,941  
Parishes: 54

[SOMERSET.GOV.UK](http://SOMERSET.GOV.UK)





**Somerset  
Intelligence**

Sedgemoor has the  
fastest growing population  
in Somerset

7th highest birth rate  
amongst 25-29 women  
in England & Wales

1 in 3 Sedgemoor residents  
work outside the district

# SEDGEMOOR

38% of homes in  
Bridgwater Westover  
have no access  
to car or van

Sedgemoor has the lowest  
average house sale price  
in Somerset (£190,970)  
but Axbridge is the most  
expensive town in  
the county (£292,000)

Central Sydenham  
(Bridgwater) is one of  
the 150 most deprived  
areas in the country

Trussell Trust foodbanks  
in Bridgwater and Highbridge  
have served over 700  
households since April

[WWW.SOMERSET.GOV.UK](http://WWW.SOMERSET.GOV.UK)







**Somerset  
Intelligence**

Alfred's Tower area has the 2<sup>nd</sup> highest % of households in fuel poverty in the county

South Somerset has the highest rate of homelessness and in priority need in the SW

Crewkerne is the town with the lowest average house sale price in Somerset. Bruton has the second highest

Just over 3,000 MoD military and civilian personnel live in the district

# SOUTH SOMERSET

South Yeovil has the highest rate in Somerset for drug-related hospital admissions

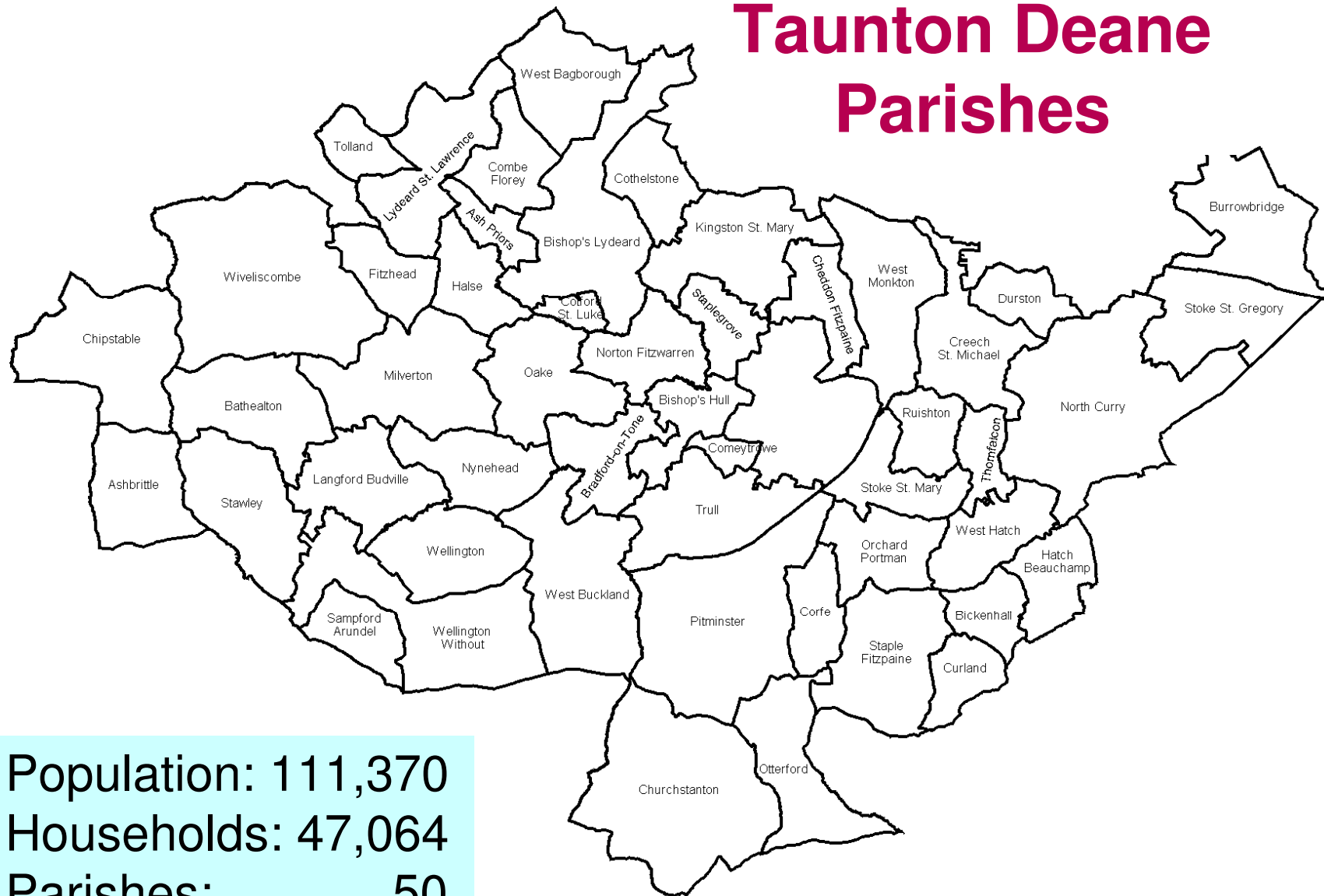
Maperton has the oldest median age of any parish in Somerset (66)

Yeovil Central has the highest number of Hindu and Muslim followers in Somerset

[WWW.SOMERSET.GOV.UK](http://WWW.SOMERSET.GOV.UK)



# Taunton Deane Parishes



Population: 111,370  
Households: 47,064  
Parishes: 50

[WWW.SOMERSET.GOV.UK](http://WWW.SOMERSET.GOV.UK)





**Somerset  
Intelligence**

Comeytrove has the highest % of employees going to work by bike in Somerset

More than a third of Taunton Deane workers are employed by the public sector

Taunton Deane has one of the lowest % of low birthweight babies in the country

Norton Fitzwarren has one of the youngest populations in the county

# TAUNTON DEANE

East Taunton has the highest rate in Somerset for alcohol-related hospital admissions

Trussell Trust's foodbank in Taunton has provided parcels for 1,322 households since 1<sup>st</sup> April

Taunton's Roman Road area is one of England's 200 most deprived localities

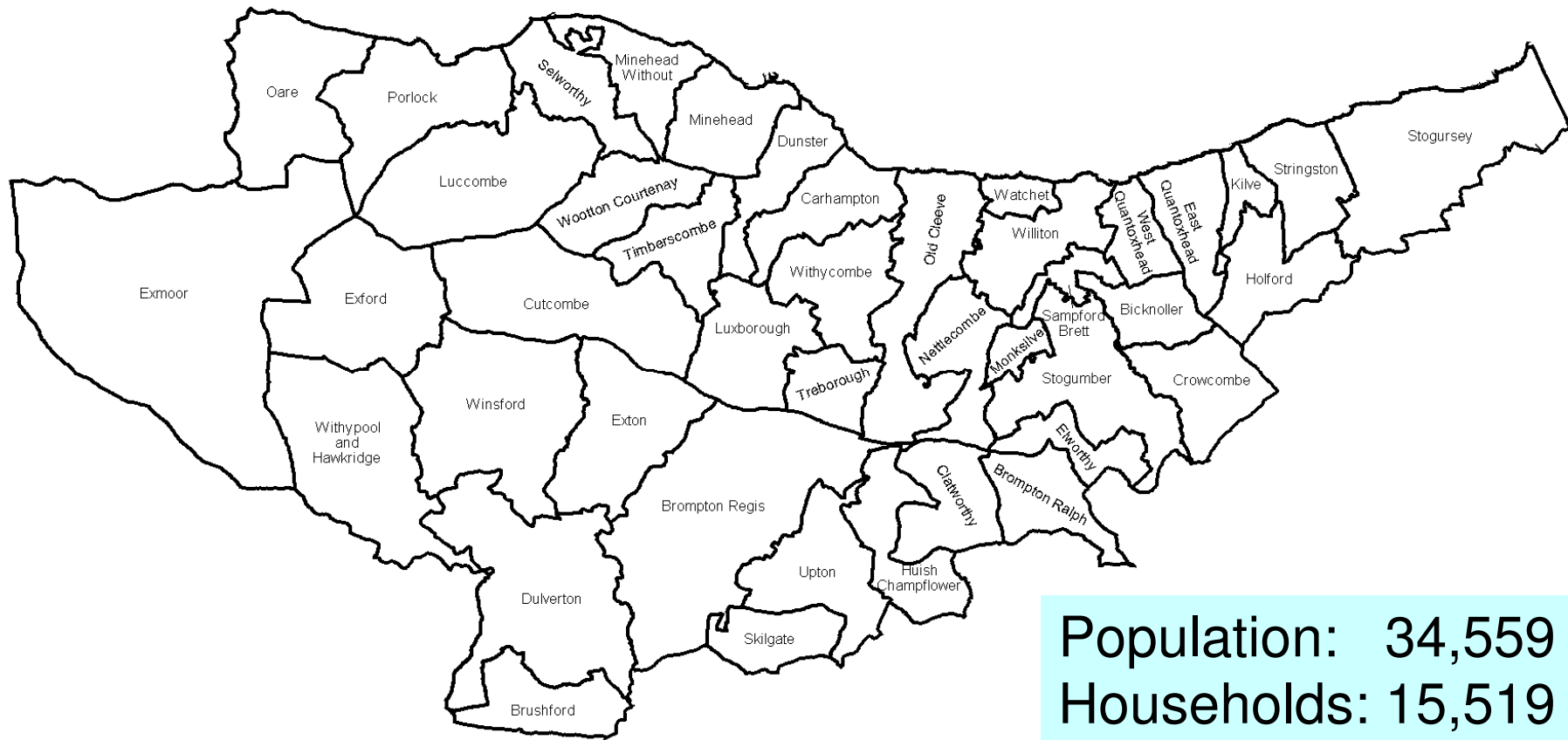
[WWW.SOMERSET.GOV.UK](http://WWW.SOMERSET.GOV.UK)



# West Somerset Parishes



**Somerset  
Intelligence**



**Population: 34,559**  
**Households: 15,519**  
**Parishes: 43**

[WWW.SOMERSET.GOV.UK](http://WWW.SOMERSET.GOV.UK)



County Council



**Somerset  
Intelligence**

Dunster & Timberscombe has the highest % of unpaid carers in Somerset

West Somerset's population fell between 2001 and 2011, one of the few in England to do so

In 2012/13, Watchet had the 2nd lowest house sale prices of any town in Somerset

# WEST SOMERSET

It has the sixth lowest population density in England & Wales

About 11,500 people live within 10km of Hinkley Point

Almost half the Minehead South population is economically inactive, the highest in Somerset

At 51.7 years, its median age is the highest in the country

1 in 5 households are in fuel poverty, and 1 in 3 in Roadwater

[WWW.SOMERSET.GOV.UK](http://WWW.SOMERSET.GOV.UK)





**Somerset  
Intelligence**

## If you want to know more...

### **SOMERSET INTELLIGENCE WEBSITE:**

For briefings, reports and needs analyses

[www.somersetintelligence.org.uk](http://www.somersetintelligence.org.uk)

For data and maps

[www.informsomerset.org.uk](http://www.informsomerset.org.uk)

### **CENSUS DATA ON PARISHES:**

<http://www.somersetintelligence.org.uk/census-datasets.html>

**CONTACT:** Mike Smith [mjsmith@somerset.gov.uk](mailto:mjsmith@somerset.gov.uk)

01823 355589

WWW.SOMERSET.GOV.UK

