

# First Release of 2011 Census statistics (Population and Household Estimates): Briefing Note

## 1. Introduction

On 24 July 2012, the Office for National Statistics (ONS) published the first data from the national Census carried out on 27 March 2011. The first release provided population estimates (including short-term migrants) and household estimates at county and local authority district level. Figures were rounded to the nearest 100. On 24 September 2012, the ONS published final, unrounded figures.

Note: Population estimates for smaller geographical areas (e.g. wards and parishes) and the results for other questions in the 2011 Census survey will be released in late-2012 and 2013.

## 2. Key Statistics

### 2.1. Usual resident population<sup>1</sup>

Area	2011 Census	% change from 2001 Census
Mendip	109,279	+5.2%
Sedgemoor	114,588	+8.2%
South Somerset	161,243	+6.8%
Taunton Deane	110,187	+7.7%
West Somerset	34,675	-1.2%
<b>Somerset</b>	<b>529,972</b>	<b>+6.4%</b>
South West	5,288,935	+7.3%
England	53,012,456	+7.9%

### 2.2. Number of non-UK short-term residents<sup>2</sup>

Area	2011 Census
Mendip	136
Sedgemoor	79
South Somerset	176
Taunton Deane	202
West Somerset	58
<b>Somerset</b>	<b>651</b>
South West	11,487
England	187,897

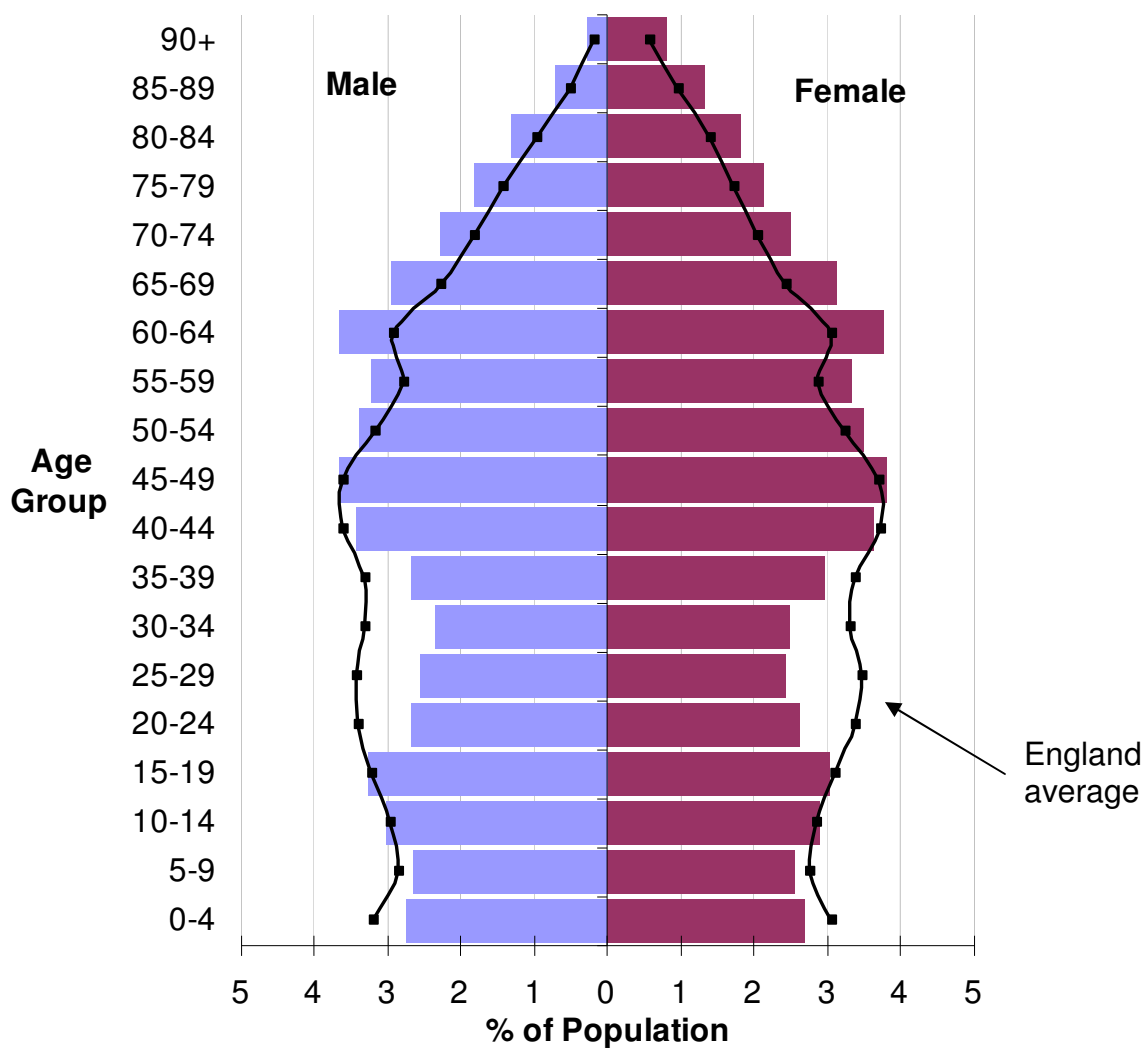
<sup>1</sup> A usual resident of the UK is anyone who, on census day 2011, was in the UK and had stayed or intended to stay in the UK for a period of 12 months.

<sup>2</sup> A short-term migrant is anyone born outside the UK who has stayed or intends to stay in the UK for a period of three months or more but less than 12 months.

### 2.3. Number of occupied households<sup>3</sup>

Area	2011 Census
Mendip	46,157
Sedgemoor	48,801
South Somerset	69,501
Taunton Deane	46,907
West Somerset	15,623
<b>Somerset</b>	<b>226,989</b>
South West	2,264,641
England	22,063,368

### 2.4. Population Pyramid: Somerset (usual resident population), 2011 Census

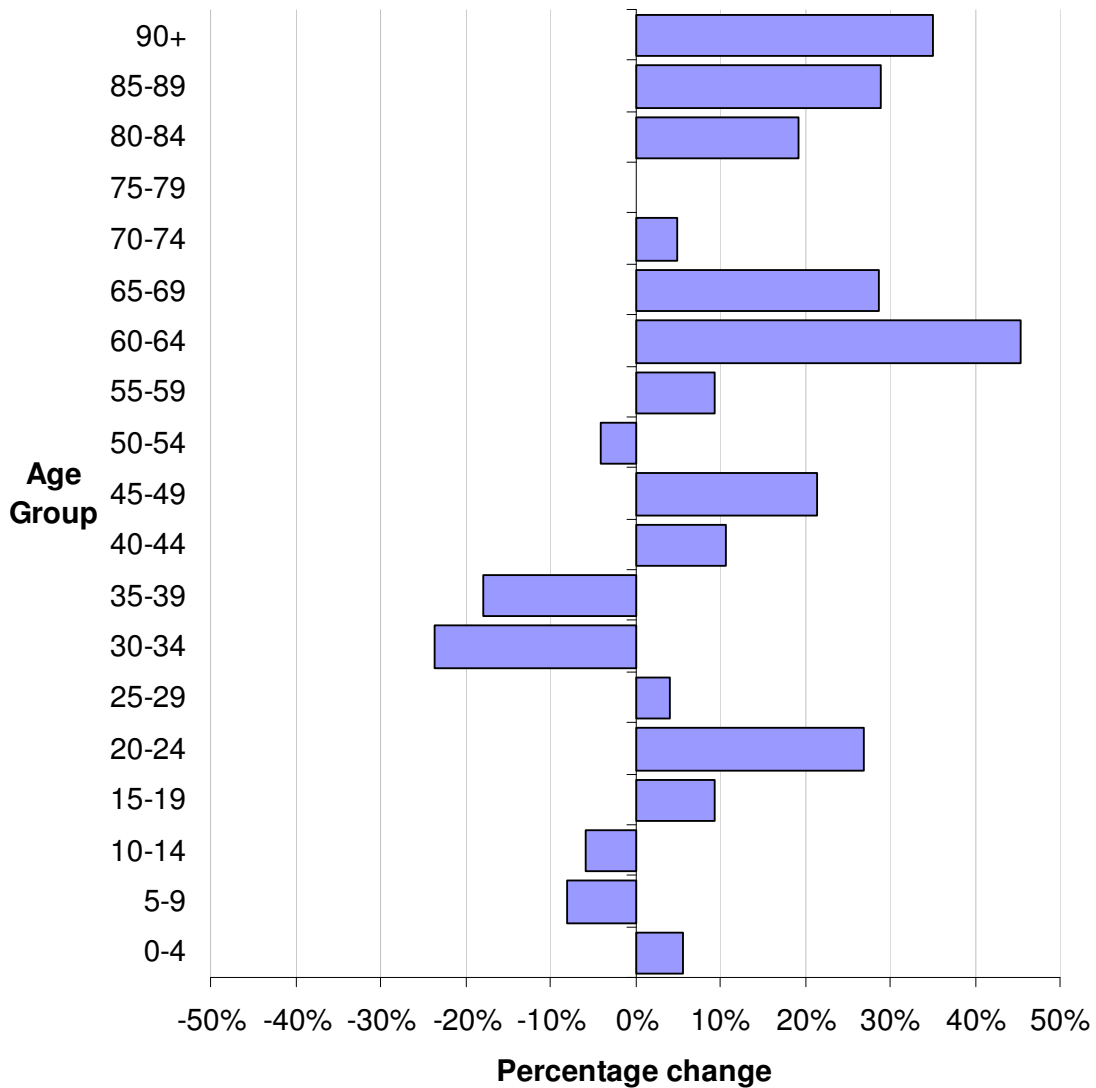


<sup>3</sup> A household is defined as one person living alone, or a group of people (not necessarily related) living at the same address who share cooking facilities and share a living room, sitting room or dining area.

## 2.4. Somerset population by Broad Age Band

Age Band	2011 Census	% change from 2001 Census
Under 15	87,513	- 3.1%
15 to 64	330,799	+ 6.3%
65 and over	111,660	+ 15.4%

## 2.5. Percentage change in Somerset population by 5-Year Age Group, 2001 to 2011



### 3. Key Messages

- ◆ The usual resident population of Somerset is estimated to be 529,972. This represents an increase of 6.4% (31,879 people) since the last Census in 2001. The percentage increase is less than that experienced by both the South West region and England as a whole.
- ◆ Sedgemoor district has seen the biggest percentage increase in population in Somerset since 2001 (up 8.2%), while West Somerset has seen a small decrease in population (down 1.2%).
- ◆ The estimated number of people aged 80 and over in Somerset is estimated to have increased by a quarter since the 2001 Census. There has also been a notable increase in residents aged 60 to 69, as post-war baby boomers reach retirement age.
- ◆ The estimated number of people of retirement age in Somerset has increased by around 15% (14,900 people) since 2001. By comparison, the working age population has increased relatively slowly, and the number of children has declined.
- ◆ With more people retiring to Somerset and current residents living for longer, the ageing population will continue to pose challenges for service providers. Somerset also faces challenges in how to drive the local economy forward to support the growing numbers of people in retirement.
- ◆ There has been an increase in the estimated number of residents aged 20-24 in Somerset, which may be linked to increases in young migrant workers. Despite this increase, Somerset has a below average proportion of residents in the 20 to 39 age groups compared to England as a whole.
- ◆ With no university in Somerset, limited employment opportunities (particularly in rural areas), and high house prices relative to income, there are increasing challenges in encouraging younger adults to remain in the county.
- ◆ In addition to the usual resident population, there are estimated to be approximately 651 short-term residents in Somerset (overseas visitors staying for between three and twelve months).
- ◆ The number of occupied households in Somerset is estimated to be 226,989.
- ◆ The 2011 Census response rate for Somerset was 96%.

### 4. Further Information

For latest results and analysis on the 2011 Census, including a guide to understanding census estimates, see:

[www.somersetintelligence.org.uk/census2011/](http://www.somersetintelligence.org.uk/census2011/)