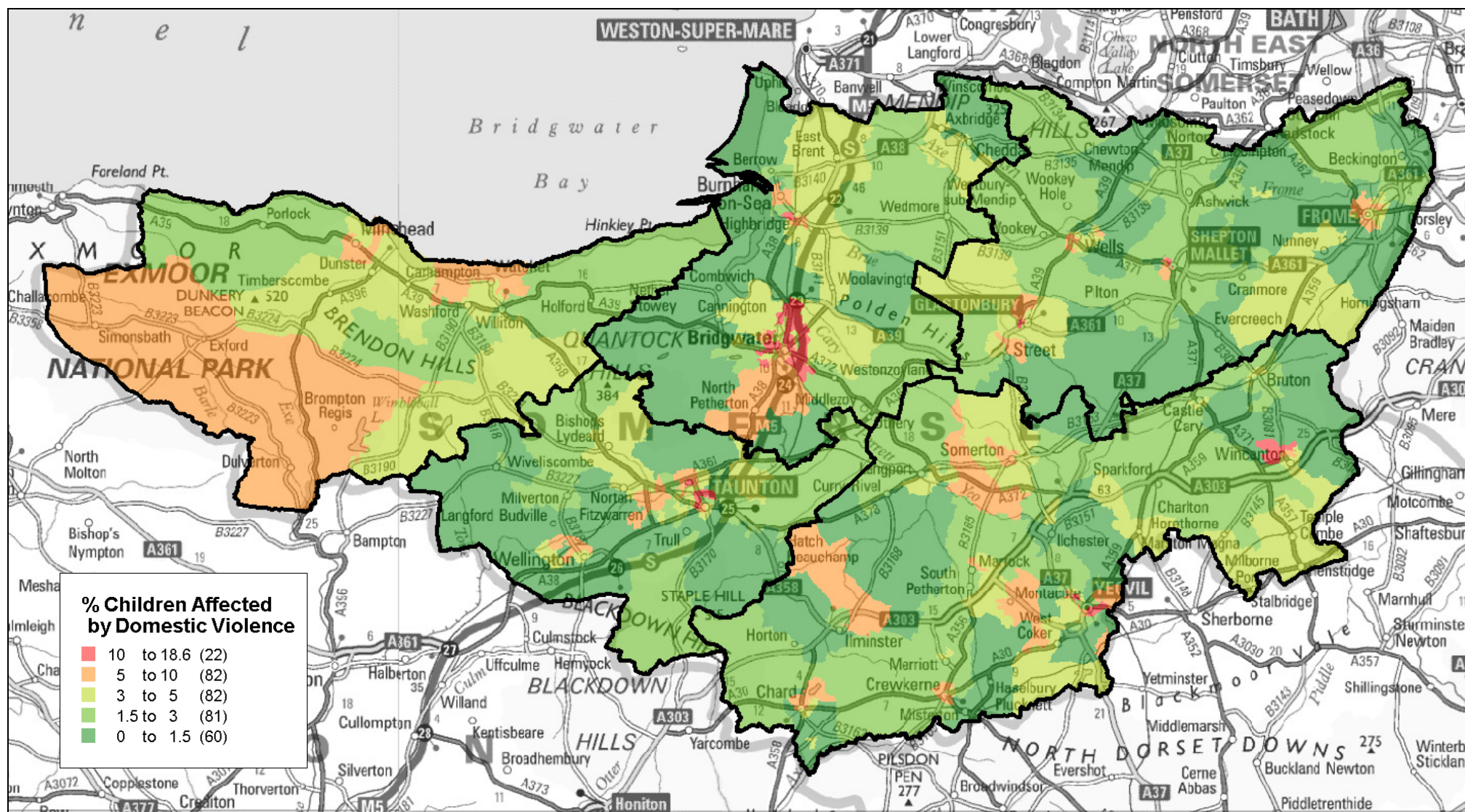
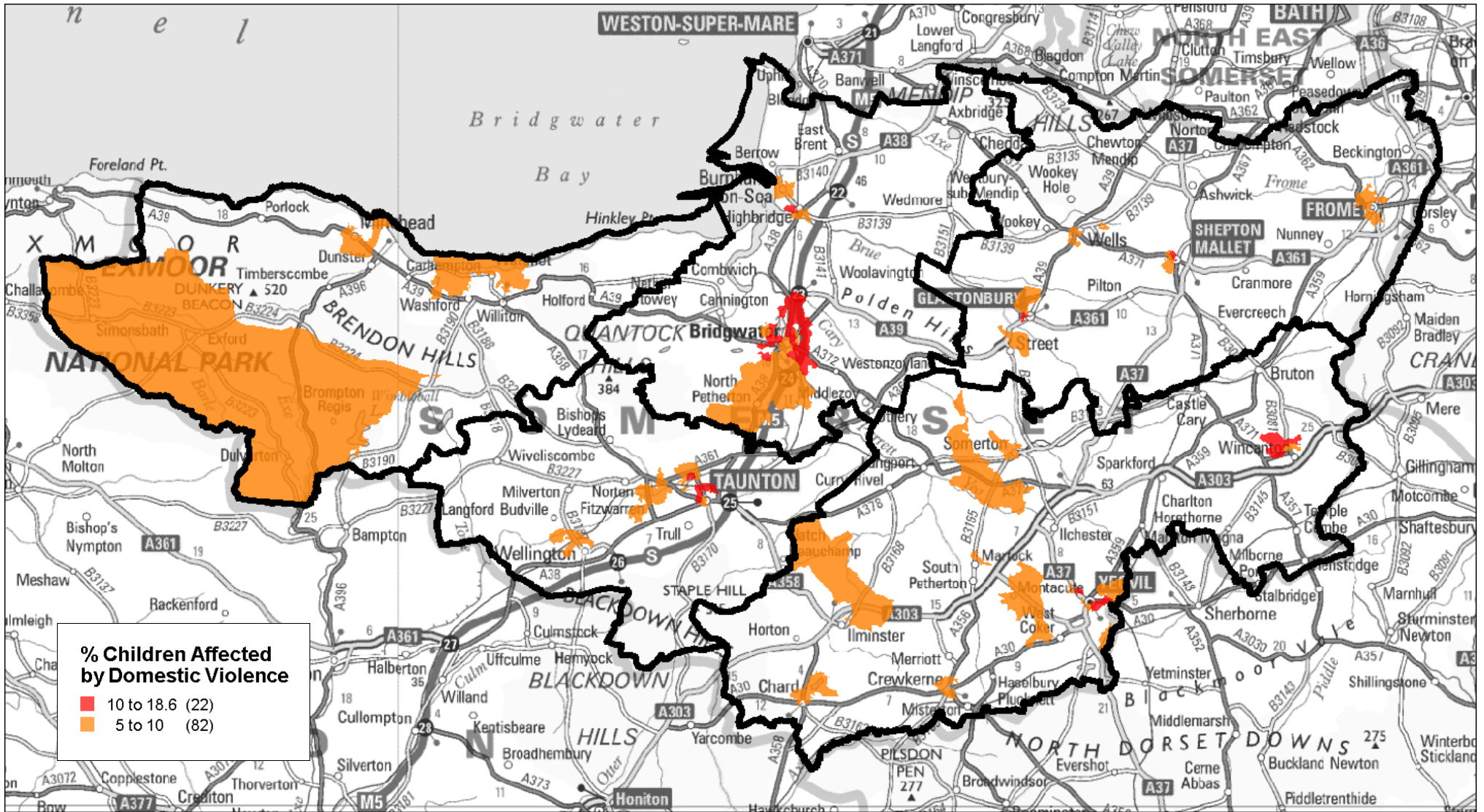


Map 1: Proportion of Children (aged 0-17) affected by Domestic Violence in 2012/13, by LSOA – Somerset overview





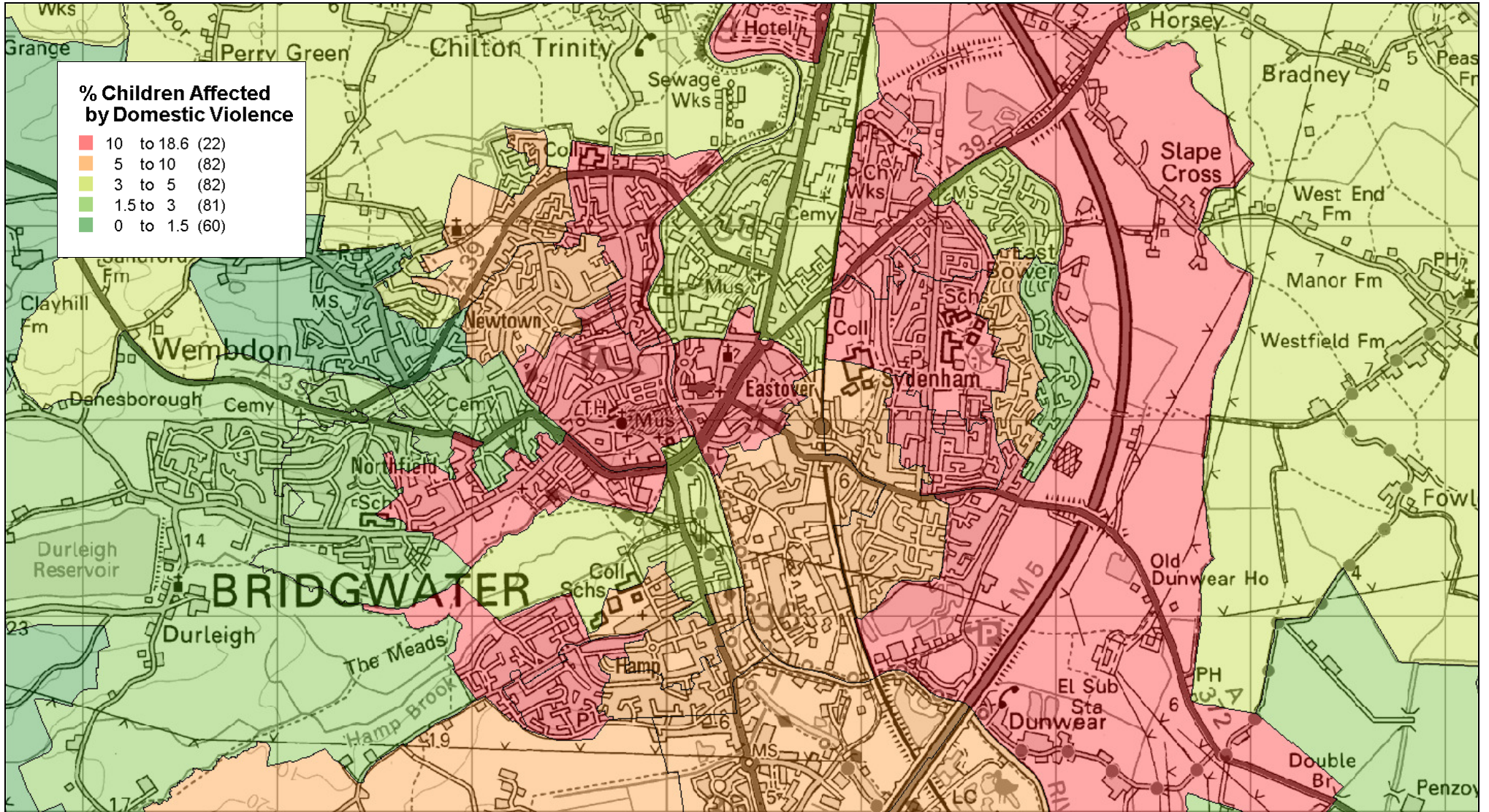
Map 2: Somerset LSOAs in which 5% or more of Children (aged 0-17) were affected by Domestic Violence in 2012/13



© Crown Copyright. All right reserved. 100038382. Somerset County Council (2013)



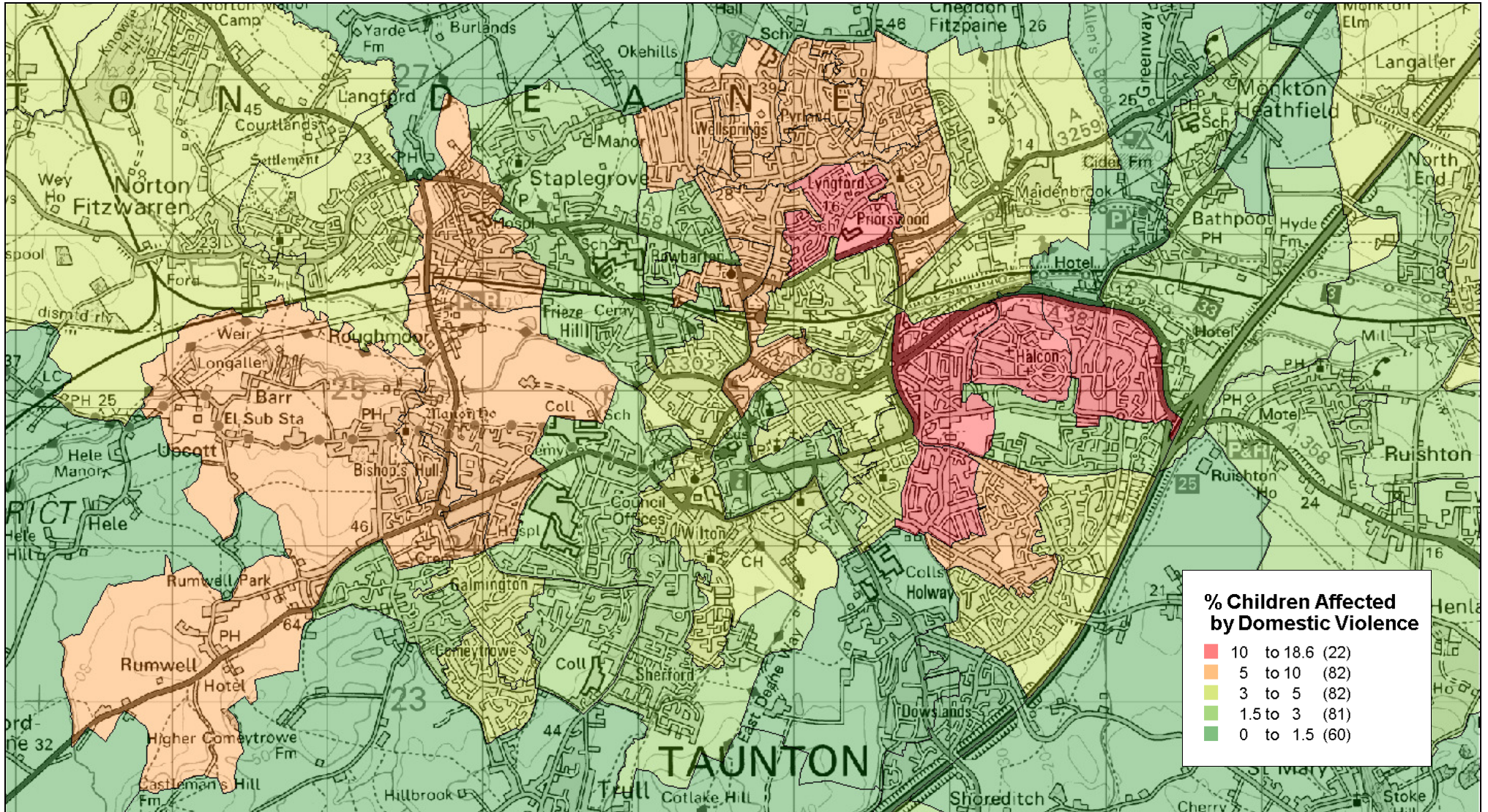
**Map 3: Proportion of Children (aged 0-17) affected by Domestic Violence in 2012/13, by LSOA - Bridgwater**



© Crown Copyright. All right reserved. 100038382. Somerset County Council (2013)



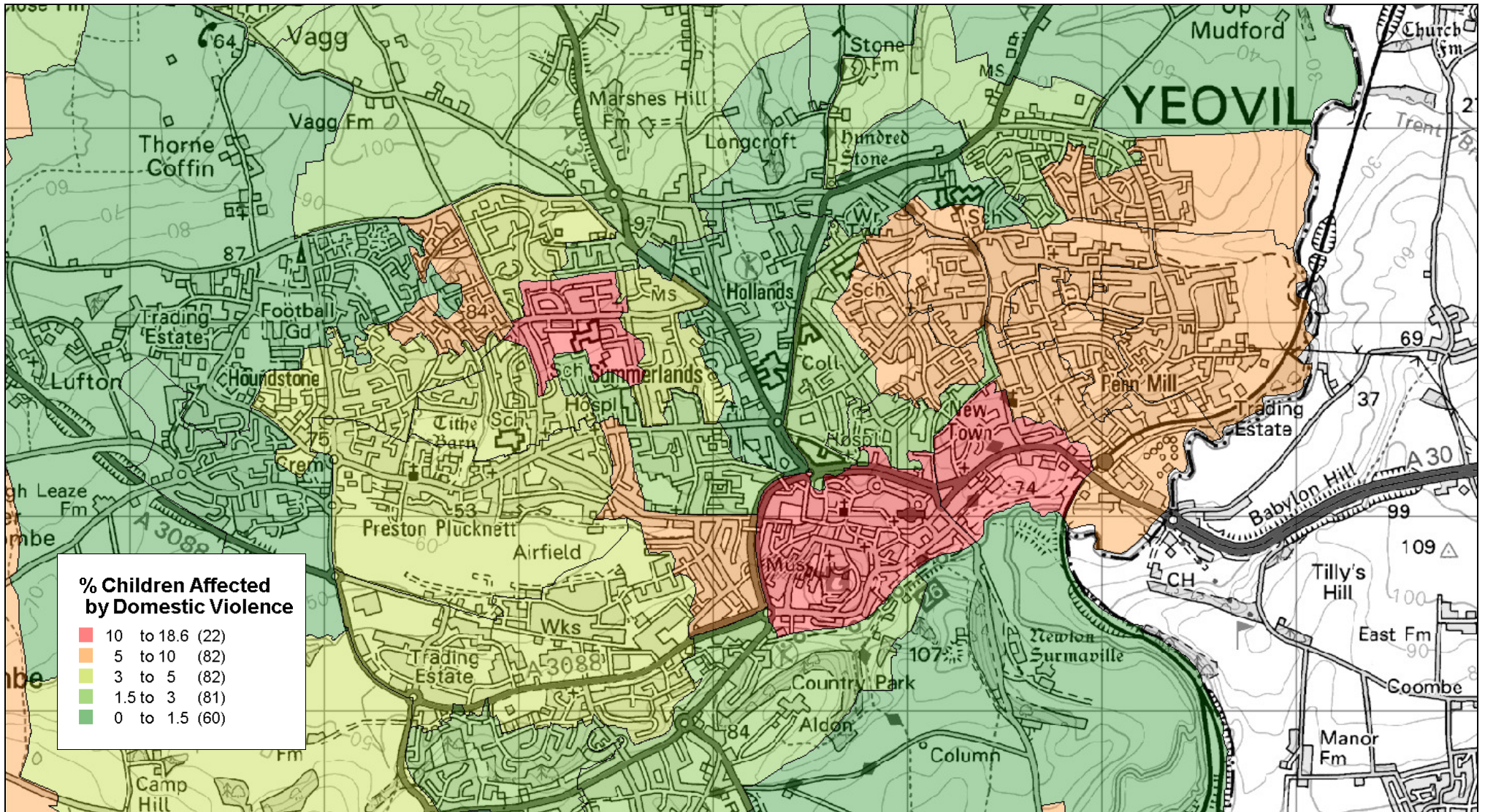
**Map 4: Proportion of Children (aged 0-17) affected by Domestic Violence in 2012/13, by LSOA - Taunton**



© Crown Copyright. All right reserved. 100038382. Somerset County Council (2013)



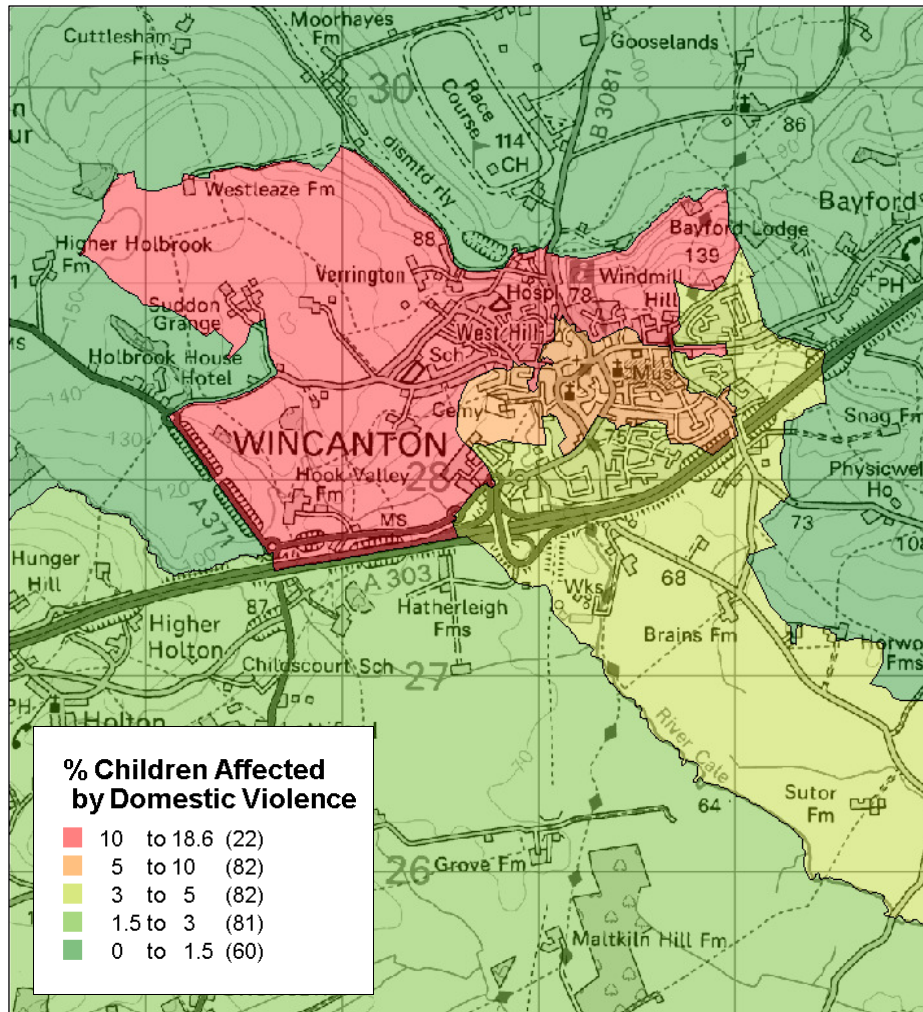
**Map 5: Proportion of Children (aged 0-17) affected by Domestic Violence in 2012/13, by LSOA - Yeovil**



© Crown Copyright. All right reserved. 100038382. Somerset County Council (2013)

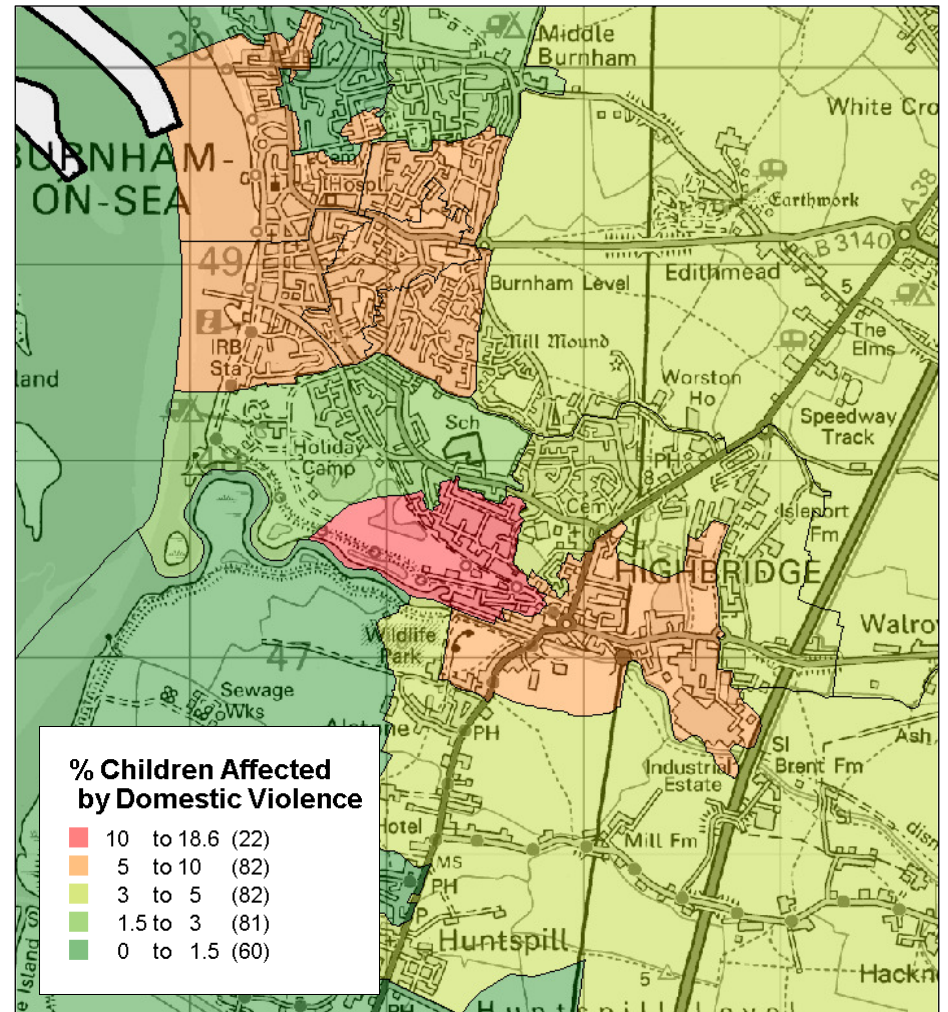


**Map 6: Proportion of Children (aged 0-17) affected by Domestic Violence in 2012/13, by LSOA - Wincanton**



© Crown Copyright. All right reserved. 100038382. Somerset County Council (2013)

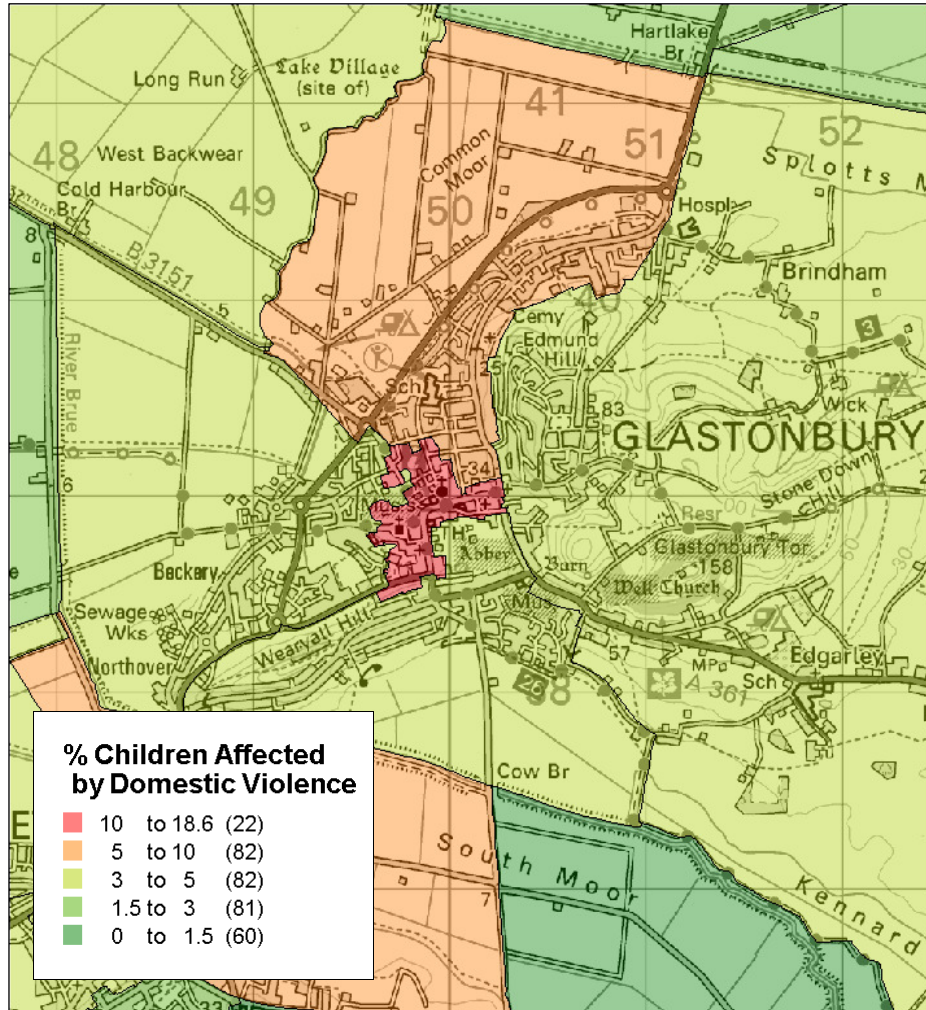
**Map 7: Proportion of Children (aged 0-17) affected by Domestic Violence in 2012/13, by LSOA - Highbridge**



© Crown Copyright. All right reserved. 100038382. Somerset County Council (2013)

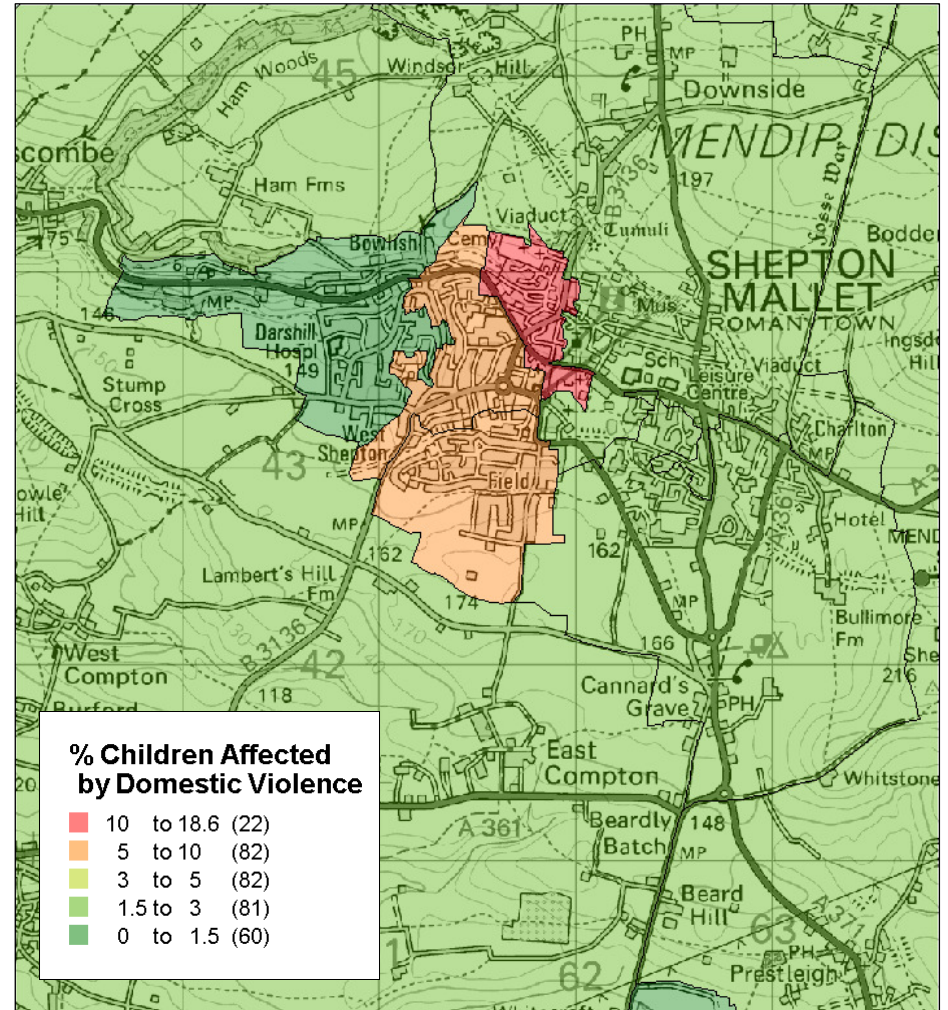


**Map 8: Proportion of Children (aged 0-17) affected by Domestic Violence in 2012/13, by LSOA - Glastonbury**



© Crown Copyright. All right reserved. 100038382. Somerset County Council (2013)

**Map 9: Proportion of Children (aged 0-17) affected by Domestic Violence in 2012/13, by LSOA – Shepton Mallet**



© Crown Copyright. All right reserved. 100038382. Somerset County Council (2013)