

English Indices of Deprivation 2019

Somerset Summary

Introduction

The English Indices of Deprivation are the official measure of deprivation in England and are published by the Ministry of Housing, Communities and Local Government (MHCLG).

The 2019 version is based on 39 separate indicators, organised across seven domains (and sub-domains) of deprivation which are combined, using appropriate weights, to calculate the Index of Multiple Deprivation (IMD). This is an overall measure of multiple deprivation experienced by people living in an area and is calculated for every Lower layer Super Output Area (LSOA), or neighbourhood, in England. Every such neighbourhood is ranked according to its level of deprivation relative to that of other areas. The data can be used to assess which parts of Somerset face challenges, down to very small geographical areas.

A full list of underlying indicators, domains and sub-domains is provided in the Appendix. Most indicators in the 2019 Indices of Deprivation relate to the financial year 2015/16.

As well as identifying the most deprived parts of Somerset now, this briefing compares the 2019 figures with the previous Indices of Deprivation 2015.

Key messages

- Somerset generally is better than the national average in terms of overall levels of deprivation.
- Since 2015 there has been a slight shift towards greater deprivation in Somerset relative to the rest of England, particularly in relation to the quality of housing.
- The number of 'highly deprived' neighbourhoods in Somerset (categorised as being within the 20% most deprived in England) increased to 29 in IMD 2019, up from 25 at the time of IMD 2015.
- Around 47,000 Somerset residents now live in a neighbourhood (LSOA) identified as one of the 20% most deprived in England.
- The highest levels of deprivation are found within the county's larger urban areas.
- The most deprived area of Somerset is the Highbridge South West area of Sedgemoor.
- The least deprived area is in the Sampson's Wood area of Yeovil, which falls within the 1% least deprived in England.
- Children in Somerset face greater income deprivation than older people

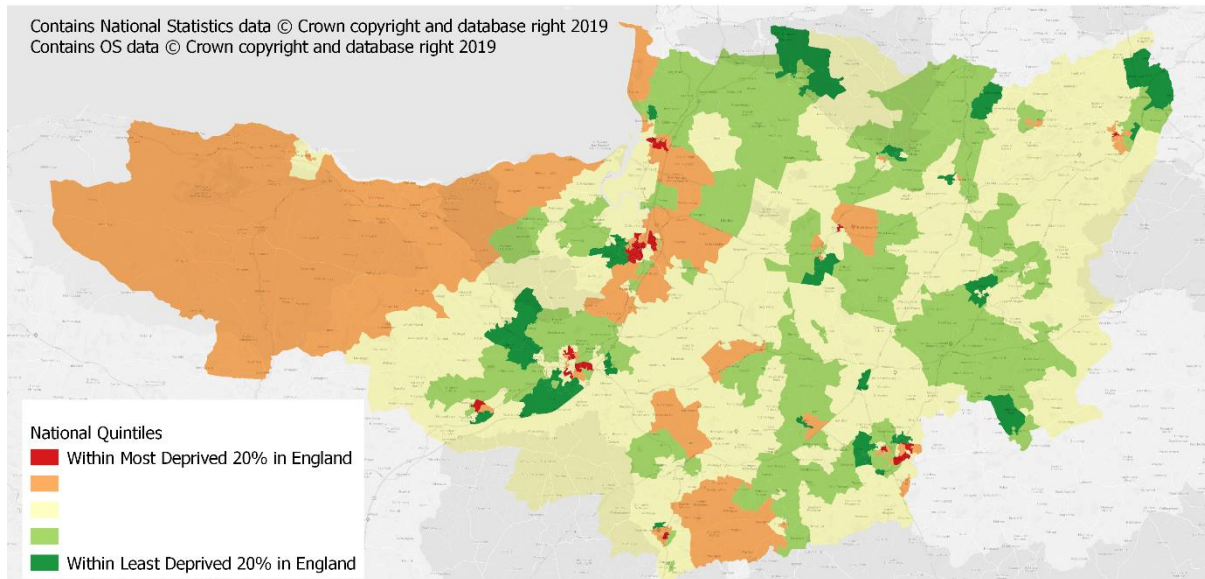
More information including interactive versions of charts and maps used in this report can be found at <http://www.somersetintelligence.org.uk/imd>

Deprivation in Somerset

The overall pattern of multiple deprivation in Somerset according to the Index of Multiple Deprivation (IMD) 2019 is shown in Map 1, following. Map 2 shows the pattern for the previous IMD in 2015. Urban areas and rural Somerset West and Taunton continue to have the greatest proportions of deprived neighbourhoods (LSOAs) in Somerset.

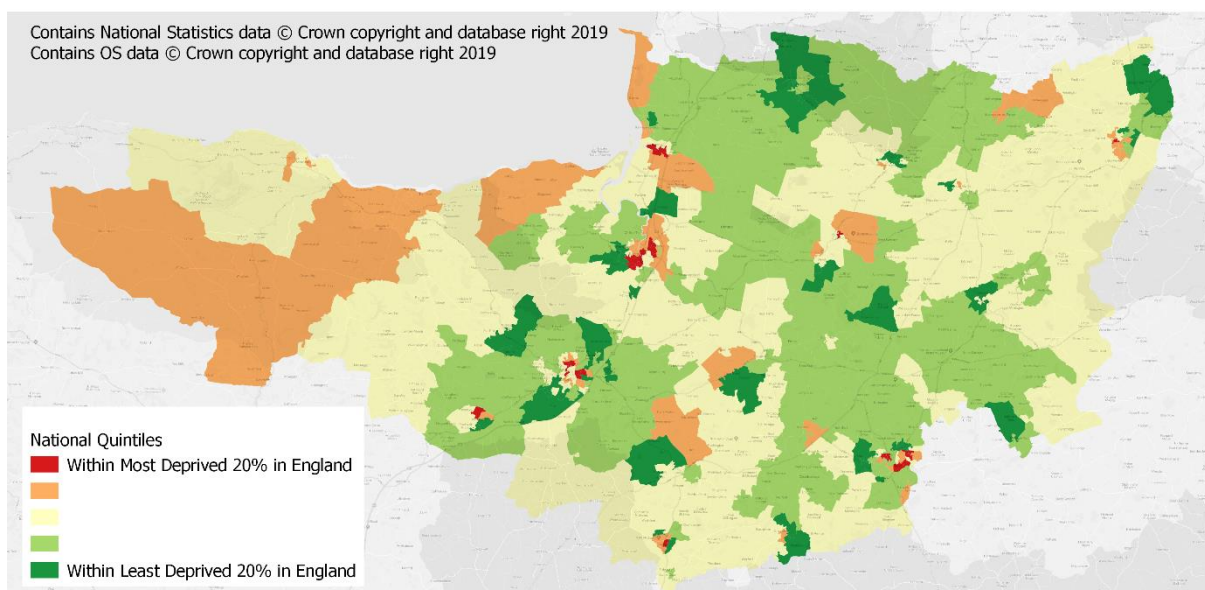
Map 1: Index of Multiple Deprivation (IMD) 2019 in Somerset

Index of Multiple Deprivation 2019 by LSOA



Map 2: Index of Multiple Deprivation (IMD) 2015 in Somerset

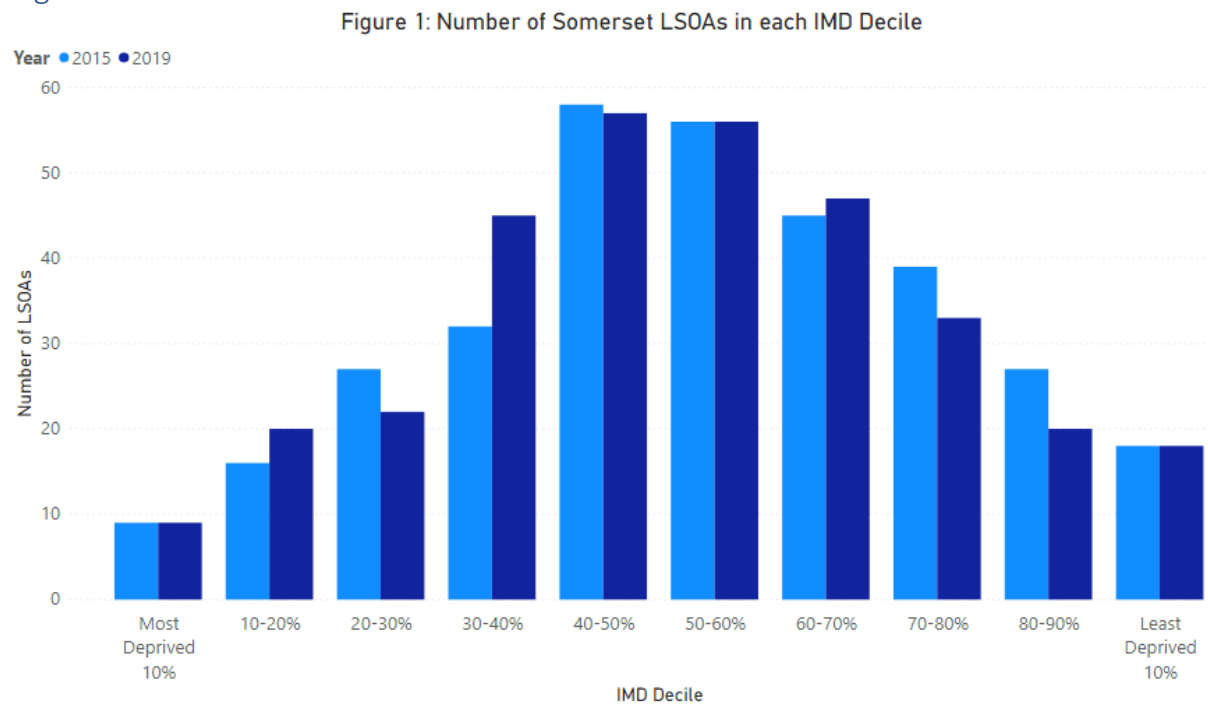
Index of Multiple Deprivation 2015 by LSOA



Deprivation Profile by IMD Decile

A more detailed profile of overall deprivation of Somerset is available by considering how many neighbourhoods fall into each IMD decile (that is, the 0-10%, 10-20%, 20-30%, 30-40% most deprived neighbourhoods, etc.). See Figure 1, below.

Figure 1: Distribution of Somerset LSOAs in IMD Deciles



Over one third of Somerset LSOAs sit within the 40% to 60% most deprived nationally with numbers declining towards the extremes of deprivation. Since 2015 there has been a shift in the profile towards greater deprivation in Somerset, relative to the rest of England.

Neighbourhood Level Deprivation

Of the 327 LSOAs in Somerset, 29 are within the most deprived **20%** nationally according to IMD 2019, up from 25 LSOAs at the time of IMD 2015. Sedgemoor has the highest number of LSOAs in this category (13), followed by Somerset West and Taunton (8), South Somerset (6) and Mendip (2). These LSOAs have a combined population of around 47,000.

As in IMD 2015, nine Somerset LSOAs are amongst the most deprived **10%** nationally. These are in parts of Taunton (3 LSOAs in the most deprived 10%), Bridgwater (3 LSOAs), Yeovil (1 LSOA), Highbridge (1 LSOA) and Glastonbury (1 LSOA). The combined population of these areas is approximately 14,000.

By contrast, the least deprived neighbourhood in Somerset is the Sampson's Wood area of Yeovil, which ranks within the 1% least deprived nationally. According to IMD 2019, Somerset has a total of 18 LSOAs ranked within the 10% least deprived in England (no change from IMD 2015). Burnham-on-Sea, Castle Cary, Chard, Frome and Street each have 1 LSOA within the 10% least deprived. There are 2 LSOAs in the 10% least deprived in both Bridgwater and Wells, 3 in Yeovil and 5 in Taunton. The Shipham

LSOA, located close to the North Somerset border, is also in the 10% least deprived in England.

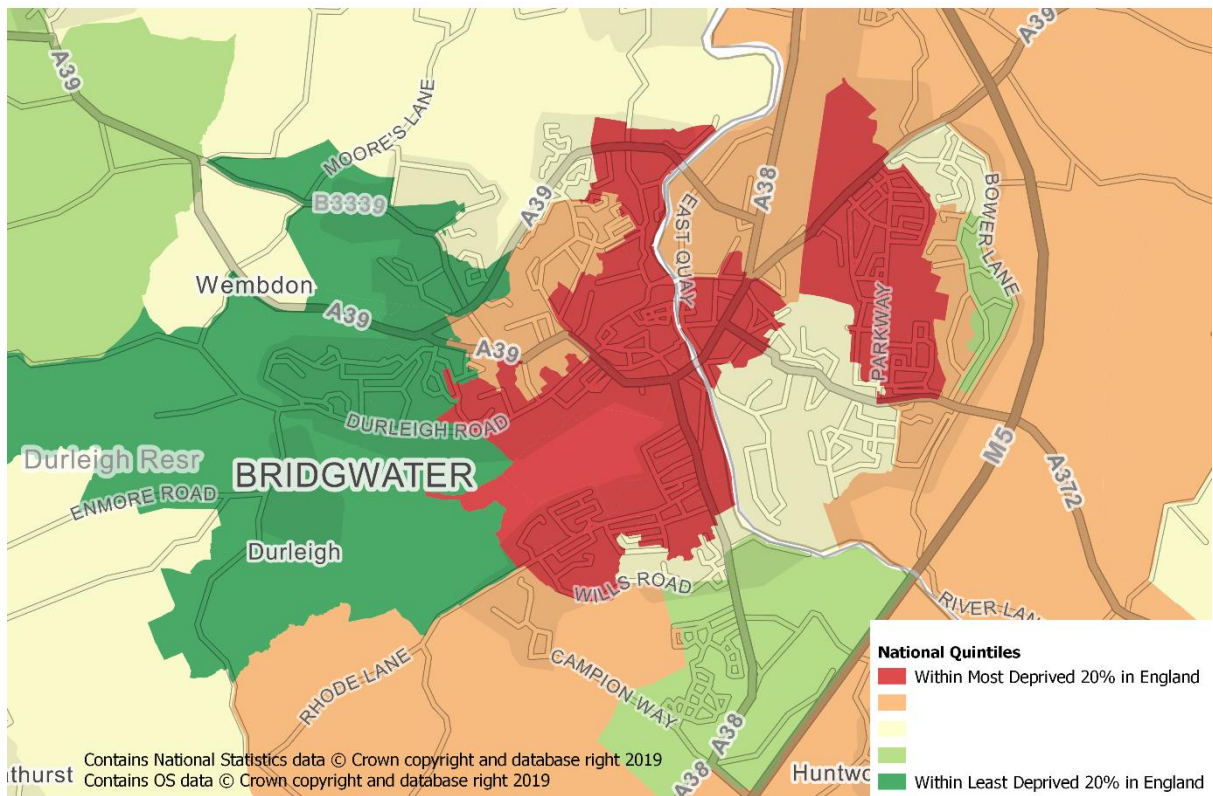
Table 1: Somerset neighbourhoods (LSOAs) within the 20% most deprived neighbourhoods in England

LSOA Code	LSOA Name	District	National IMD Rank
E01029132	Highbridge South West	Sedgemoor	1133
E01029106	Bridgwater Sydenham Central	Sedgemoor	1246
E01029293	Taunton Roman Road	Somerset West and Taunton	1344
E01029292	Taunton Lambrook	Somerset West and Taunton	1504
E01029297	Taunton Lyngford East	Somerset West and Taunton	2086
E01029100	Bridgwater Hamp East	Sedgemoor	2820
E01029247	Yeovil Westfield	South Somerset	2923
E01029107	Bridgwater Parkway South	Sedgemoor	3224
E01029046	Glastonbury Central	Mendip	3233
E01029105	Bridgwater West Street	Sedgemoor	3394
E01029098	Bridgwater Hamp North	Sedgemoor	3428
E01029099	Bridgwater Hamp West	Sedgemoor	3598
E01029236	Yeovil Penn Mill North	South Somerset	3703
E01029109	Bridgwater Sydenham North	Sedgemoor	3850
E01029042	Frome Trinity, Cork Street and Nunney Road	Mendip	4252
E01029131	Highbridge South East	Sedgemoor	4407
E01029112	Bridgwater Town Centre	Sedgemoor	4643
E01029239	Yeovil Sherborne Road	South Somerset	4833
E01029095	Bridgwater Eastover Cental	Sedgemoor	5001
E01029177	Chard Jocelyn West	South Somerset	5092
E01029307	Taunton Pyriand North	Somerset West and Taunton	5246
E01029234	Yeovil Town Centre	South Somerset	5349
E01029097	Bridgwater Hamp South West	Sedgemoor	5555
E01029304	Taunton Pyriand South	Somerset West and Taunton	5559
E01029237	Yeovil Birchfield	South Somerset	5651
E01029311	Wellington North	Somerset West and Taunton	5715
E01029284	Taunton Town Centre	Somerset West and Taunton	5754
E01029291	Taunton Halcon East	Somerset West and Taunton	5809
E01029110	Bridgwater Chilton Street	Sedgemoor	6288

* All neighbourhoods (LSOAs) in England are ranked between 1 and 32,844, with '1' the most deprived nationally

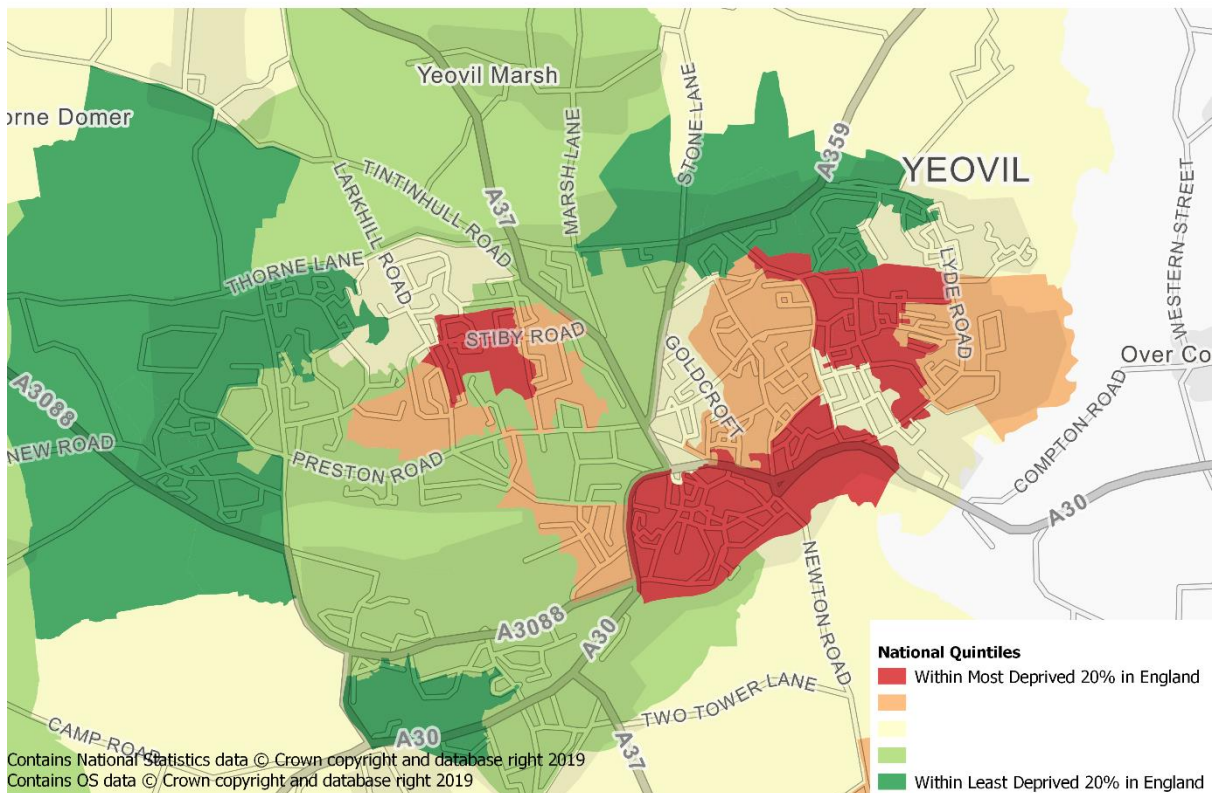
Map 3: Index of Multiple Deprivation (IMD) 2019 in Bridgwater

Index of Multiple Deprivation 2019 in Bridgwater



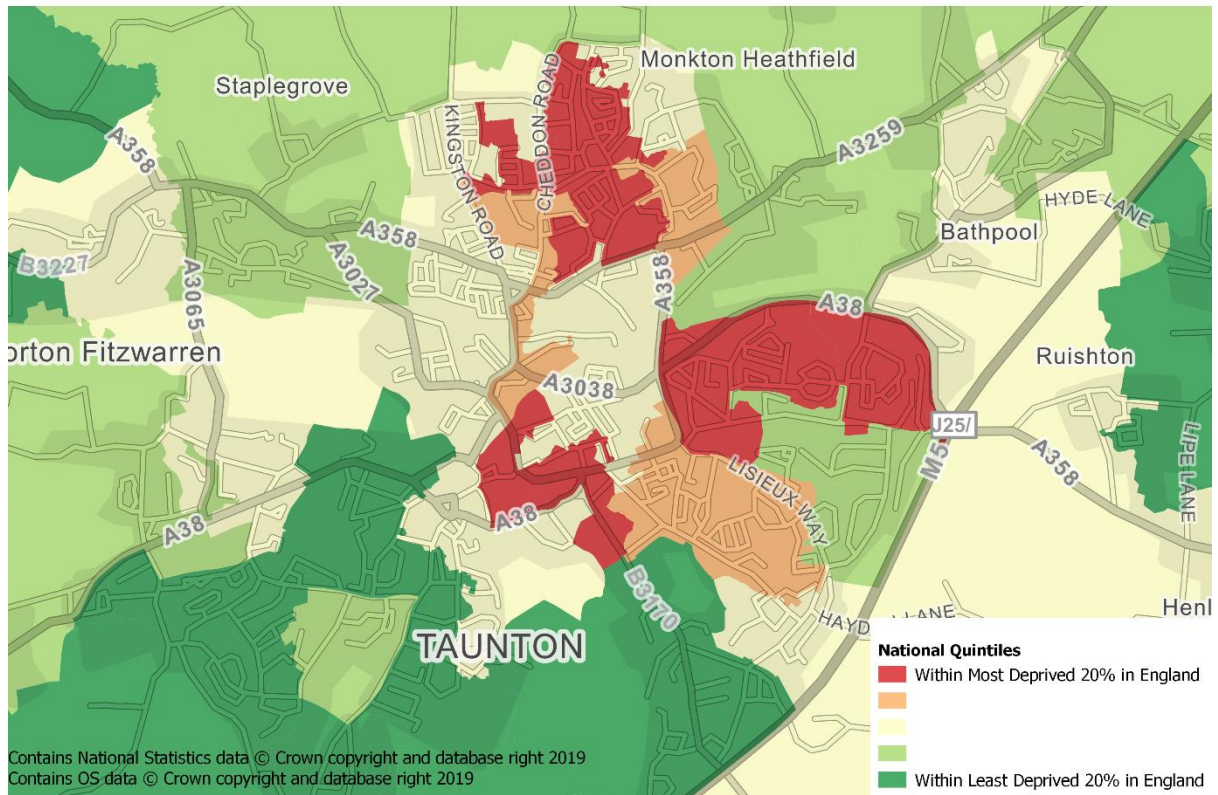
Map 4: Index of Multiple Deprivation (IMD) 2019 in Yeovil

Index of Multiple Deprivation 2019 in Yeovil



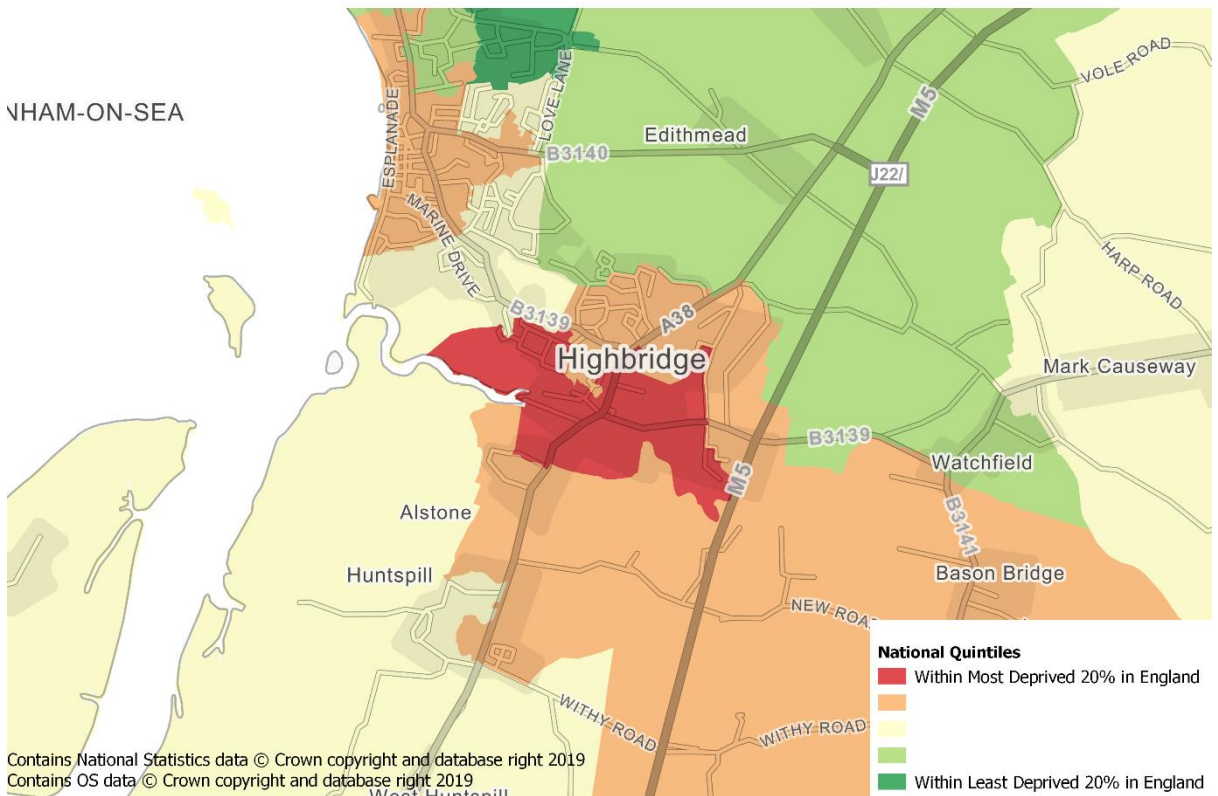
Map 5: Index of Multiple Deprivation (IMD) 2019 in Taunton

Index of Multiple Deprivation 2019 in Taunton



Map 6: Index of Multiple Deprivation (IMD) 2019 in Highbridge

Index of Multiple Deprivation 2019 in Highbridge



Changes in Overall Deprivation since 2015

Of the 327 LSOAs in Somerset, 29% fell into a more deprived decile, 58% did not change decile and 13% moved to a less deprived decile. Each decile consists of around 3,300 LSOAs.

The 20 LSOAs which have seen the most change in their rank since 2015 are recorded in table 2 below:

Table 2: LSOAs with Most Change in IMD Rank Since 2015

LSOA Code	District	LSOA Name	Rank Change	Decile Change
E01029118	Sedgemoor	Burnham South West	-5331	↓
E01029286	Somerset West and Taunton	Taunton East Reach	-5198	↓
E01029325	Somerset West and Taunton	Dunster and Timberscombe	-4715	↓
E01029027	Mendip	Chesterblade, Evercreech North, Milton Clevedon and Stoney Stratton	4509	↑
E01029130	Sedgemoor	East Poldens	-4187	↓
E01029318	Somerset West and Taunton	West Monkton	-4182	↓
E01029184	South Somerset	Crewkerne North	-4146	↓
E01032632	Sedgemoor	Chilton Trinity	-4106	↓
E01029041	Mendip	Frome Victoria Park	3849	↑
E01029038	Mendip	Frome The Mount	3829	↑
E01029192	South Somerset	Stoke-sub-Hamdon	3823	↑
E01029024	Mendip	Chilcompton	3815	↑
E01029267	Somerset West and Taunton	Milverton	-3793	↓
E01029188	South Somerset	Curry Rivel South	-3621	↓
E01029023	Mendip	Beckington and Berkley	-3595	↓
E01029198	South Somerset	Ilchester	3529	↑
E01029291	Somerset West and Taunton	Taunton Halcon East	-3515	↓
E01029271	Somerset West and Taunton	North Curry	-3509	↓
E01029310	Somerset West and Taunton	Wellington East	-3436	↓
E01029139	Sedgemoor	Middlezoy	-3429	↓
E01032651	Somerset West and Taunton	Norton Fitzwarren West	3399	↑
E01029230	South Somerset	Cricket St Thomas	-3389	↓
E01029312	Somerset West and Taunton	Wellington North West	3364	↑
E01029317	Somerset West and Taunton	Monkton Heathfield	-3361	↓
E01029134	Sedgemoor	Highbridge North East	-3329	↓

The LSOA which saw the greatest improvement in their overall relative deprivation in Somerset was the Chesterblade, Evercreech North, Milton Clevedon and Stoney Stratton area of Mendip which increased its rank by over 4,500, moving into the 70% least deprived decile.

The greatest increase in overall relative deprivation however was seen in the Burnham South West area of Sedgemoor which declined rank by over 5,300 places and moved from the 20% least deprived 40% least deprived.

Of the 25 LSOAs which saw the most change in their overall deprivation rank:

- 5 are in Sedgemoor – all became more deprived relatively
- 5 are in Mendip – 1 became more and 4 became less deprived relatively
- 10 are in Somerset West & Taunton – 8 became more and 2 became less deprived relatively
- 5 are in South Somerset – 3 became more and 2 became less deprived relatively

20% Most Deprived Neighbourhoods

Of the 25 LSOAs classified as being within the 20% most deprived nationally (ranks 1 to 6,568) in IMD 2015, 23 remain within the 20% most deprived in IMD 2019. The exceptions are:

- Taunton Lyngford West LSOA (E01029299), which is now just outside the '20% most deprived', ranked 6,868 nationally.
- Yeovil Summerlands North (E01029248), ranked close to the '20%' at 7,522.

Table 3: 23 LSOAs in 20% Most Deprived in IMD 2015 and 2019 Rank Changes

LSOA Code	District	LSOA Name	2015 Rank	2019 Rank	Rank Change
E01029234	South Somerset	Yeovil Town Centre	3220	5349	▲ 2129
E01029239	South Somerset	Yeovil Sherborne Road	3326	4833	▲ 1507
E01029095	Sedgemoor	Bridgwater Eastover Cental	4000	5001	▲ 1001
E01029177	South Somerset	Chard Jocelyn West	4302	5092	▲ 790
E01029311	Somerset West and Taunton	Wellington North	5043	5715	▲ 672
E01029247	South Somerset	Yeovil Westfield	2659	2923	▲ 264
E01029046	Mendip	Glastonbury Central	2998	3233	▲ 235
E01029292	Somerset West and Taunton	Taunton Lambrook	1353	1504	▲ 151
E01029105	Sedgemoor	Bridgwater West Street	3273	3394	▲ 121
E01029042	Mendip	Frome Trinity, Cork Street and Nunney Road	4300	4252	▼ -48
E01029297	Somerset West and Taunton	Taunton Lyngford East	2163	2086	▼ -77
E01029097	Sedgemoor	Bridgwater Hamp South West	5637	5555	▼ -82
E01029293	Somerset West and Taunton	Taunton Roman Road	1510	1344	▼ -166
E01029109	Sedgemoor	Bridgwater Sydenham North	4239	3850	▼ -389
E01029106	Sedgemoor	Bridgwater Sydenham Central	1671	1246	▼ -425
E01029100	Sedgemoor	Bridgwater Hamp East	3290	2820	▼ -470
E01029237	South Somerset	Yeovil Birchfield	6441	5651	▼ -790
E01029236	South Somerset	Yeovil Penn Mill North	4515	3703	▼ -812
E01029098	Sedgemoor	Bridgwater Hamp North	4250	3428	▼ -822
E01029099	Sedgemoor	Bridgwater Hamp West	4543	3598	▼ -945
E01029107	Sedgemoor	Bridgwater Parkway South	4292	3224	▼ -1068
E01029132	Sedgemoor	Highbridge South West	2738	1133	▼ -1605
E01029131	Sedgemoor	Highbridge South East	6228	4407	▼ -1821

Deprivation in Somerset by Domain

IMD is made up of 7 domains of deprivation based around different themes that contribute different amounts to the overall score.

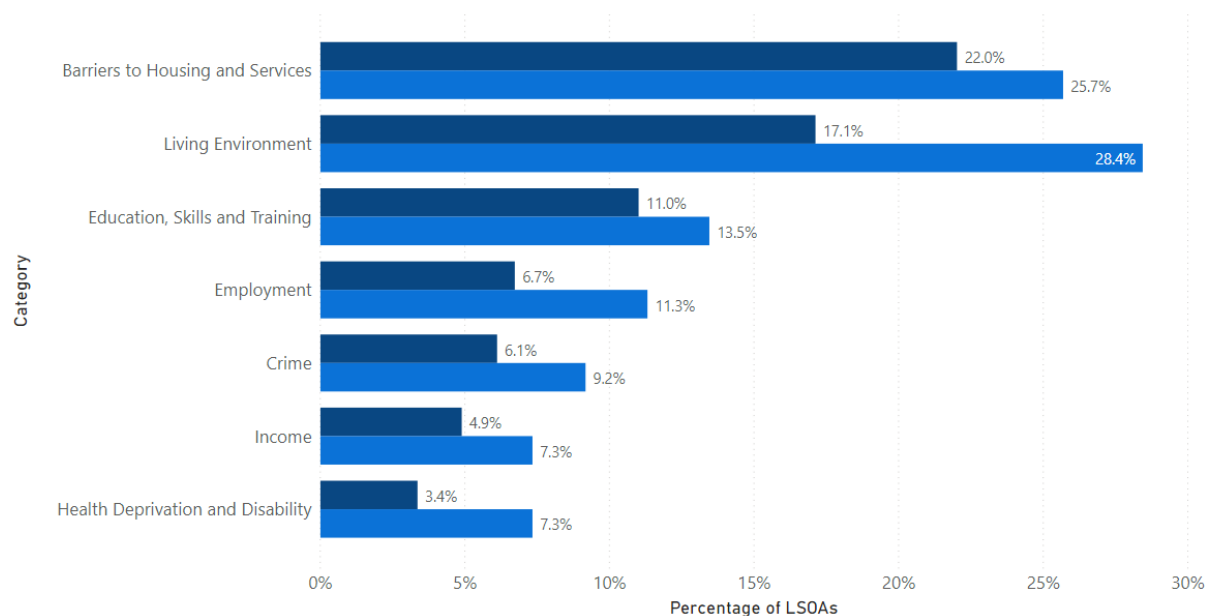
The 7 domains and their weightings are Income Deprivation (22%), Employment Deprivation (22%), Education, Skills & Training Deprivation (13.5%), Health Deprivation & Disability (13.5%), Crime (9.3%), Barriers to Housing & Services (9.3%), Living Environment Deprivation (9.3%).

The domains within which deprivation is most prevalent in Somerset can be highlighted by looking at which domains have the highest number of LSOAs within the most deprived 20% nationally. Figure 2, below, gives details and shows changes from the previous Indices of Deprivation in 2015.

Figure 2: Percentage of Somerset LSOAs in 20% Most Deprived by Deprivation Domain

Percentage of Somerset LSOAs within the 20% Most Deprived in England by Deprivation Domain

Year ● 2015 ● 2019



Though all domains saw an increase in 2019 in the number of Somerset LSOAs now falling within the 20% most deprived nationally, it is evident that the most prevalent forms of deprivation in Somerset are 'Barriers to Housing and Services' (which relates to the financial accessibility of housing and local services) and 'Living Environment' (the quality of the local environment).

Living Environment became the domain with the greatest number of Somerset LSOAs now falling within the 20% most deprived nationally with an increase of 37 since 2015. This now means that over a quarter of Somerset LSOAs are in the 20% most deprived nationally for Living Environment.

Table 4: Change in Percentage of Somerset LSOAs in 20% Most Deprived in England by Domain

Category	2015	2019	Change
Barriers to Housing and Services	22.0%	25.7%	↑ 3.7%
Crime	6.1%	9.2%	↑ 3.1%
Education, Skills and Training	11.0%	13.5%	↑ 2.5%
Employment	6.7%	11.3%	↑ 4.6%
Health Deprivation and Disability	3.4%	7.3%	↑ 3.9%
Income	4.9%	7.3%	↑ 2.4%
Index of Multiple Deprivation (IMD)	6.1%	8.9%	↑ 2.8%
Living Environment	17.1%	28.4%	↑ 11.3%

Local Authority Level Deprivation

The Indices of Deprivation can be summarised in a range of ways to describe relative deprivation among local authorities. Each of these leads to a different ranking of local authorities. The different methodologies are:

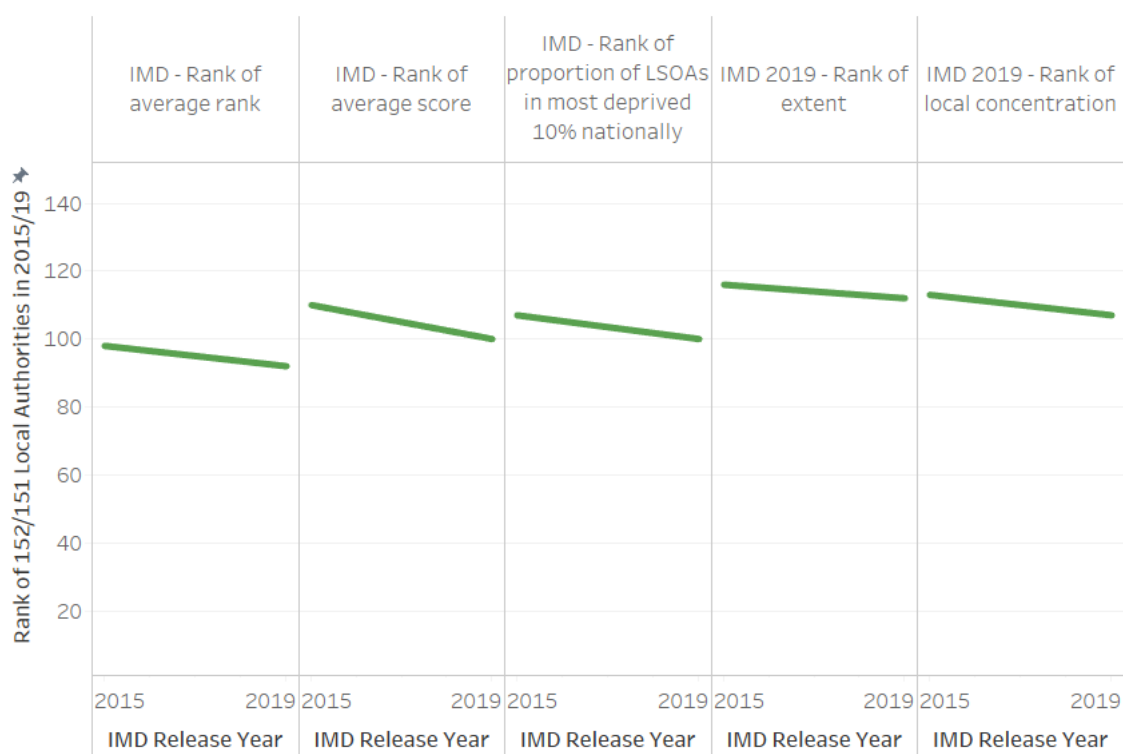
- Average rank: Population weighted average of the combined ranks for the LSOAs within a local authority area.
- Average score: Population weighted average of the combined scores for the LSOAs in a local authority area.
- Proportion of Lower-layer Super Output Areas (LSOAs) in most deprived 10% nationally
- Extent: Proportion of a local authority's population living in the 10% most deprived LSOAs in the country.
- Local concentration: Population weighted average of the ranks of a local authority's most deprived LSOAs that contain exactly 10% of the local authority's population.

Depending on the methodology used, Somerset is ranked as being between the 92nd and 112th most deprived upper-tier local authority in England (of 151 local authorities). Somerset can therefore be considered as being within the 40% least deprived areas of the country overall.

Figure 3: Changes in IMD Summary Measures for Somerset

Somerset Summary Changes 2015 to 2019

The



rankings for Somerset’s districts (of 317 Lower-tier local authorities) are provided in Table 5, below.

Table 5: District IMD 2019 rankings (of 317 LAs), where ‘1’ is the most deprived in England.

Area	Rank of average rank	Rank of average score	Rank of extent	Rank of local concentration	Rank of proportion of LSOAs in most deprived 10% nationally
Mendip	170	184	225	224	173
Sedgemoor	121	125	121	111	117
Somerset West and Taunton	142	146	164	160	142
South Somerset	163	172	187	184	182

Considering the first two methodologies (‘average rank’ and ‘average score’) in Table 5, there is a consistent order of overall deprivation at district level; with Sedgemoor being the most deprived, followed by Somerset West and Taunton, South Somerset and Mendip. In IMD 2015, South Somerset was the least deprived when using these measures.

Conversely, the other methodologies focus on LSOAs within the ‘10% most deprived’ category, these also indicate that Sedgemoor is the most deprived.

District summary changes 2015 to 2019

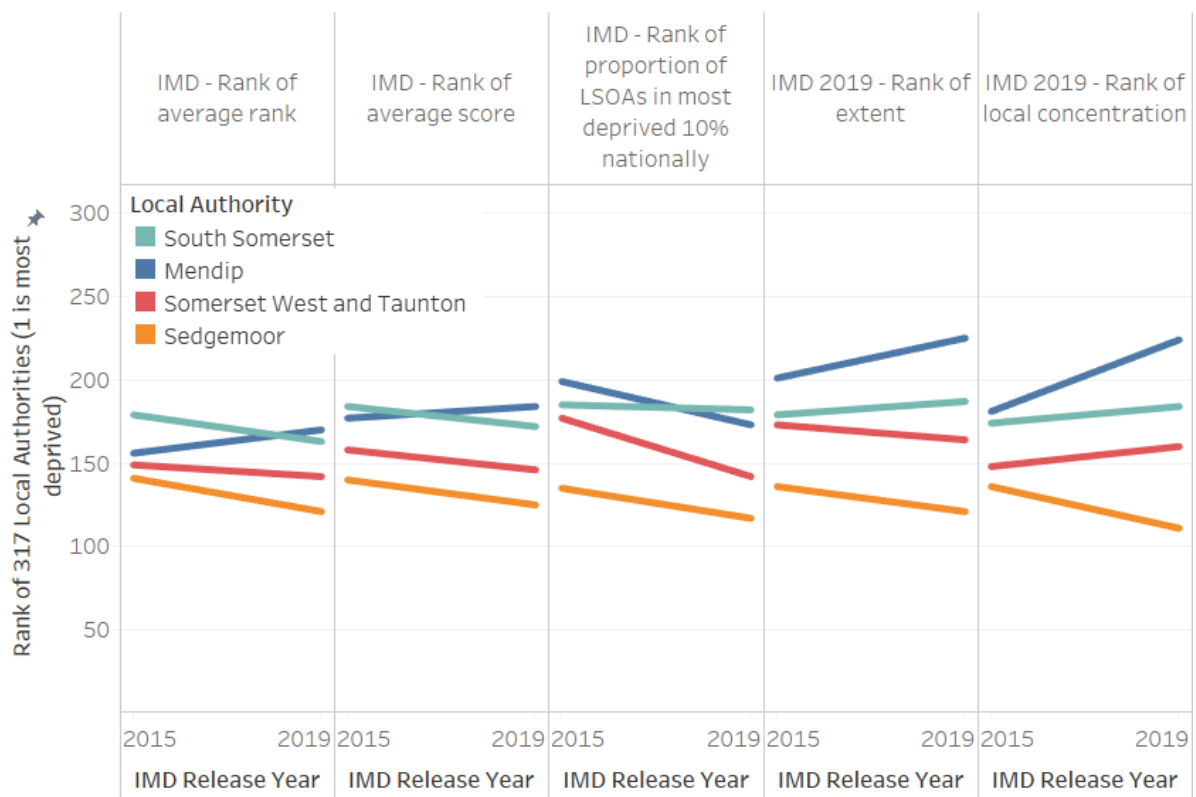


Figure 4: Changes in IMD Summary Measures for Somerset Districts

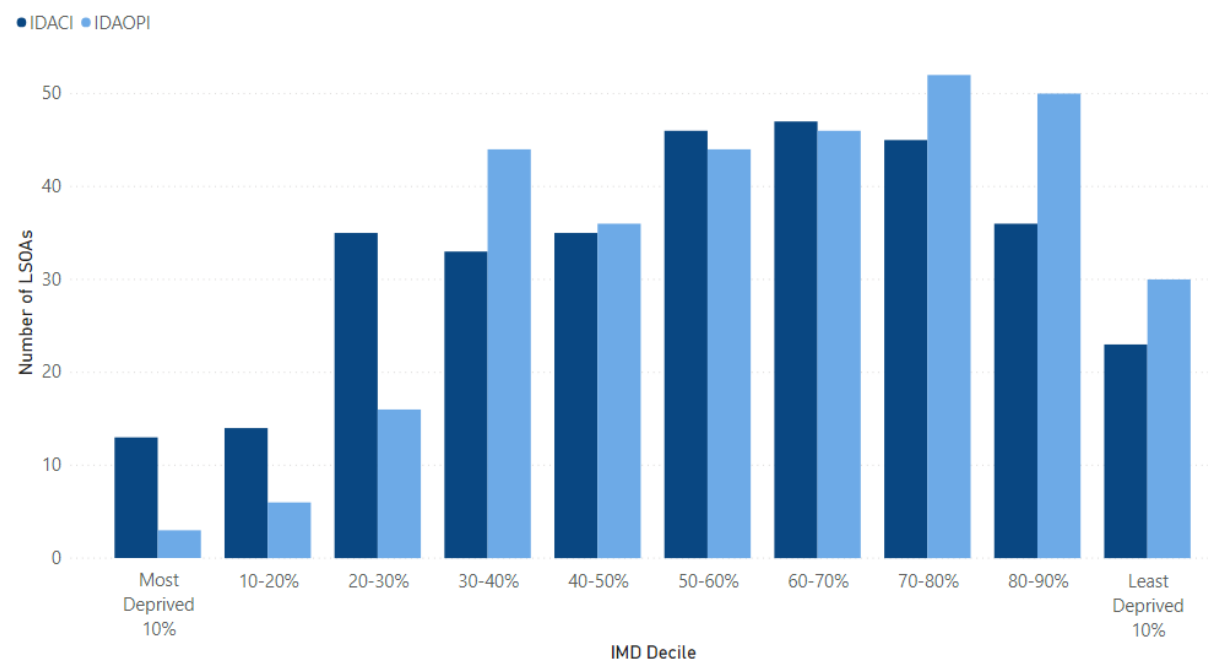
Income Deprivation Affecting Children and Older People Indexes

There are two supplementary indices, subsets of the income deprivation domain, which measure the proportion of the population experiencing deprivation relating to low income. The Income Deprivation Affecting Older People Index (IDAOPI) measures the proportion of all those aged 60 or over who experience income deprivation and the Income Deprivation Affecting Children Index (IDACI) measures the proportion of all children aged 0 to 15 living in income deprived families.

The graph below indicates that income deprivation affects children more than older people in Somerset as there are a larger proportion of LSOAs in the 3 most deprived deciles for IDACI and a larger proportion of LSOAs in the least deprived 3 deciles for IDAOPI. 27 Somerset LSOAs are in the 20% most deprived in England for IDACI, compared to only 9 for IDAOPI.

Figure 5: Distribution of Somerset LSOAs in each Decile for IDACI and IDAOPI

Number of Somerset LSOAs in each IMD Decile



IDACI Deciles by LSOA

The majority of Somerset LSOAs (60%) are among the less deprived half of all LSOAs in England. 27 Somerset LSOAs are in the 20% most deprived in the country, close to the overall deprivation figure of 29 LSOAs. 13 of Somerset's LSOAs are in the 10% most deprived for IDACI, with 6 of these being in Bridgwater. The remaining 7 are in Frome (1), Highbridge (1), Shepton Mallet (1), Yeovil (1) and Taunton (3).

Changes since 2015

There has been a general shift towards higher deprivation across Somerset with 8 more LSOAs in 20% most deprived in 2019.

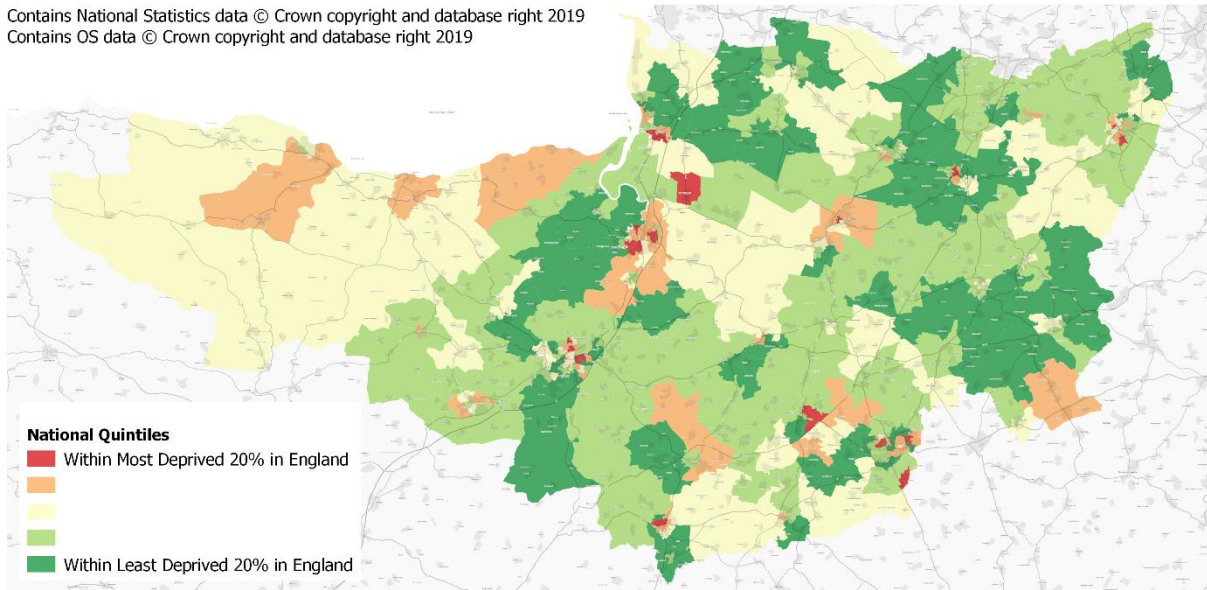
38% of LSOAs are now in a more deprived decile, with 36% staying the same and 26% moving to a less deprived decile.

Notable changes were seen in 2 LSOAs in particular: the Norton-sub-Hamdon area in South Somerset became much more deprived, moving 4 deciles, whereas the Frome Oakfield area in Mendip moved 4 deciles the other way, bringing it into the least deprived 10% in England.

Map 7: IDACI 2019 in Somerset

Income Deprivation Affecting Children Index (IDACI) 2019 by LSOA

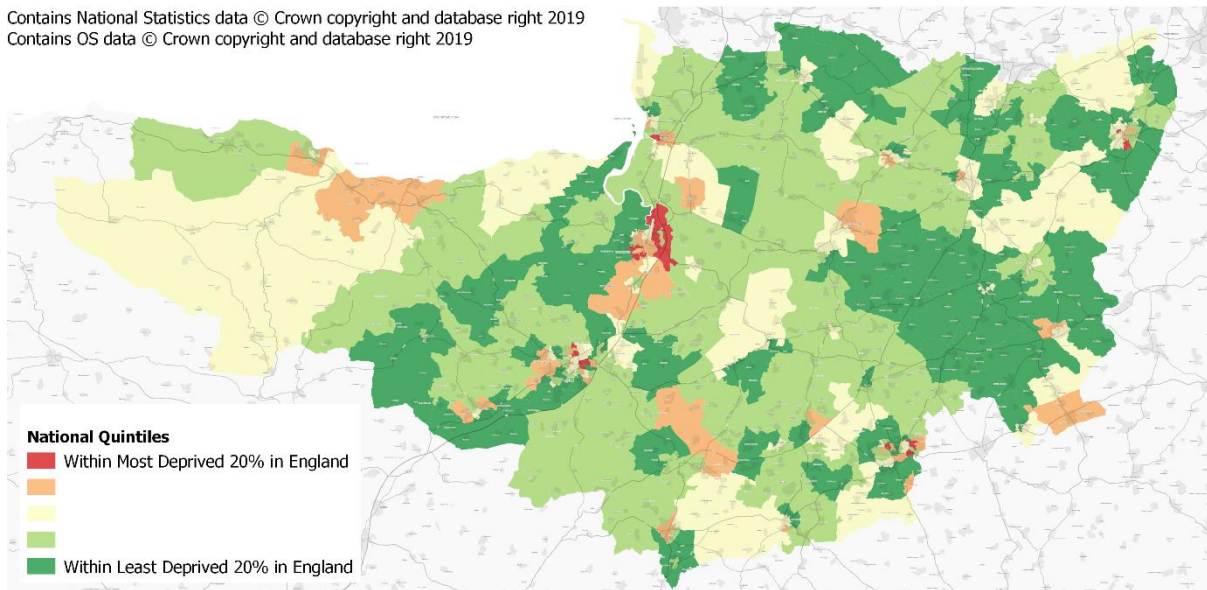
Contains National Statistics data © Crown copyright and database right 2019
Contains OS data © Crown copyright and database right 2019



Map 8: IDACI 2015 in Somerset

Income Deprivation Affecting Children Index (IDACI) 2015 by LSOA

Contains National Statistics data © Crown copyright and database right 2019
Contains OS data © Crown copyright and database right 2019



IDAOPi Deciles by LSOA

Similarly to IDACI, the large majority of Somerset LSOAs are in the less deprived half of all LSOAs in England (68%). There are far fewer (9) Somerset LSOAs in the 20% most deprived nationally, just over a third of the overall deprivation figure (29). Of the 9 Somerset LSOAs in the 20% most deprived nationally, 3 are in the most deprived 10% which are located in Chard, Highbridge and Taunton.

Changes since 2015

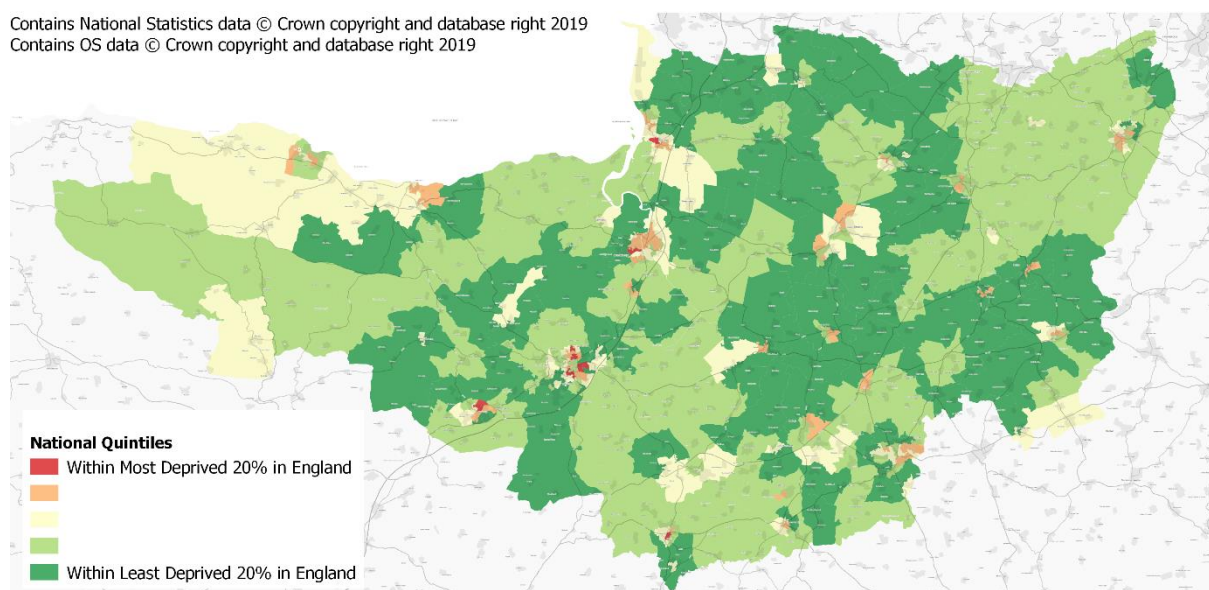
There were 2 fewer LSOAs in the 20% most deprived nationally for Somerset which reflects the generally less deprived deciles for IDAOPi. However, 19% of Somerset LSOAs did fall into a more deprived decile but 23% moved to a less deprived and the majority (58%) of Somerset LSOAs remained in their 2015 deciles.

There were no changes as notable as that of the IDACI scores however 3 LSOAs did decline by 2 deciles, becoming more deprived: the Ruishton, Henlade and Thornfalcon area of Somerset West and Taunton, the Hardington Mandeville area of South Somerset and the North Petherton Outer area of Sedgemoor. The Frome Oakfield area of Mendip, which became significantly less deprived in its IDACI score, also became less deprived with regards to its IDAOPi score, improving by 3 deciles.

Map 9: IDAOPi 2019 in Somerset

Income Deprivation Affecting Older People Index (IDAOPi) 2019 by LSOA

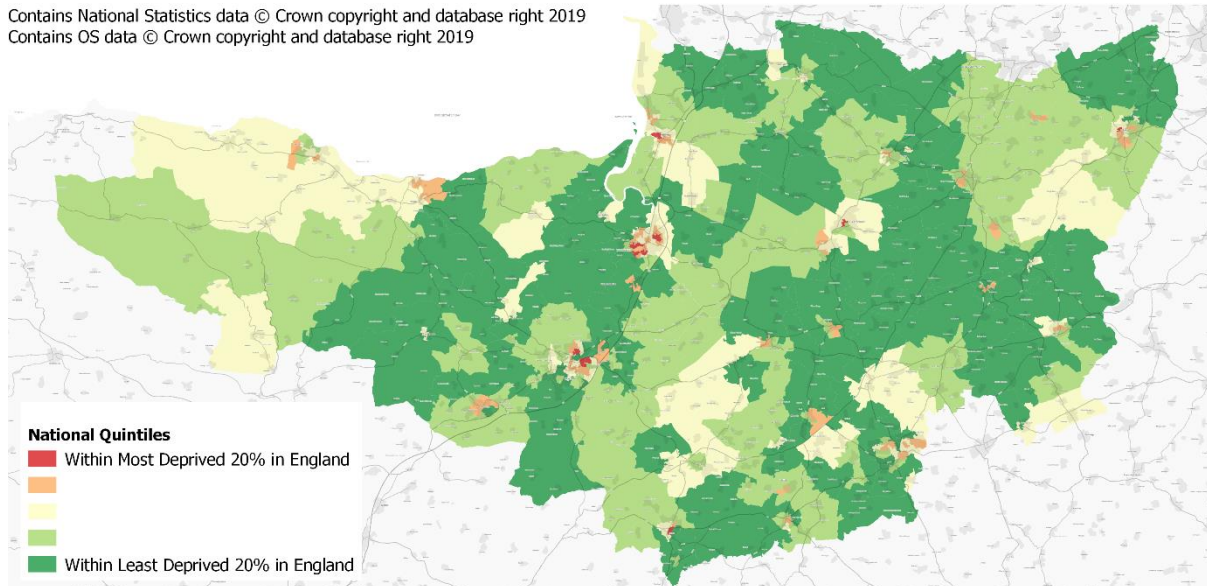
Contains National Statistics data © Crown copyright and database right 2019
Contains OS data © Crown copyright and database right 2019



Map 10: IDAOPI 2015 in Somerset

Income Deprivation Affecting Older People Index (IDAOPI) 2015 by LSOA

Contains National Statistics data © Crown copyright and database right 2019
Contains OS data © Crown copyright and database right 2019



Appendix:

Indices of Deprivation 2019: Domains, Sub-Domains and Indicators

Income Deprivation Domain

- Adults and children in Income Support families
- Adults and children in income-based Jobseeker's Allowance families
- Adults and children in income-based Employment and Support Allowance families
- Adults and children in Pension Credit (Guarantee) families
- Adults and children in Working Tax Credit and Child Tax Credit families not already counted, and whose equivalised income (excluding housing benefit) is below 60 per cent of the median before housing costs
- Asylum seekers in England in receipt of subsistence support, accommodation support, or both

Employment Deprivation Domain

- Claimants of Jobseeker's Allowance (both contribution-based and income-based), women aged 18-59 and men aged 18-64
- Claimants of Employment and Support Allowance (both contribution-based and income-based), women aged 18-59 and men aged 18-64
- Claimants of Incapacity Benefit, women aged 18-59 and men aged 18-64
- Claimants of Severe Disablement Allowance, women aged 18-59 and men aged 18-64

- Claimants of Carer's Allowance, women aged 18-59 and men aged 18-64

Health Deprivation and Disability

- Years of potential life lost
- Comparative illness and disability ratio
- Acute morbidity
- Mood and anxiety disorders

Education, Skills & Training Deprivation

Children and Young People sub-domain

- Key Stage 2 attainment: average points score
- Key Stage 4 attainment: average points score
- Secondary school absence
- Staying on in education post 16
- Entry to higher education

Adult skills sub-domain

- Adults with no or low qualifications, aged 25-59/64
- English language proficiency, aged 25-59/64

Crime

- Recorded crime rates for Violence; Burglary; Theft; Criminal damage

Barriers to Housing & Services

Geographical Barriers sub-domain

- Road distance to: post office; primary school; general store / supermarket; GP surgery

Wider Barriers sub-domain

- Household overcrowding
- Homelessness
- Housing affordability

Living Environment Deprivation

Indoors Living Environment sub-domain

- Housing in poor condition
- Houses without central heating

Outdoors Living Environment sub-domain

- Air quality
- Road traffic accidents