

Somerset Health and Well-being Board

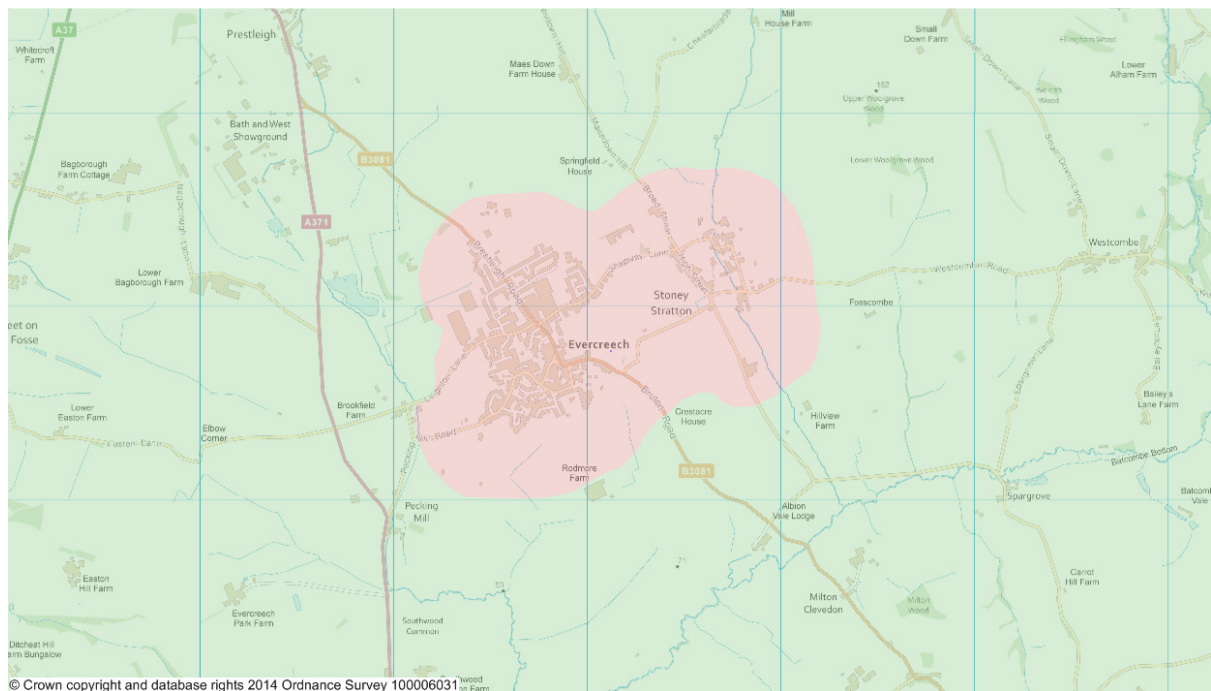
Pharmaceutical Needs Assessment 2015

Annexe 3 – Maps of Controlled and Non-controlled Areas (Mendip)

The Department of Health deems that some areas are rural and therefore ‘controlled’, meaning that dispensing practices are able to provide medicines, as pharmacies may not be commercially viable. The whole of Somerset has been determined to be CONTROLLED, except those areas specifically determined to be non-controlled as shown on the maps here. Controlled areas are rural in nature and more than 1.6km from a pharmacy.

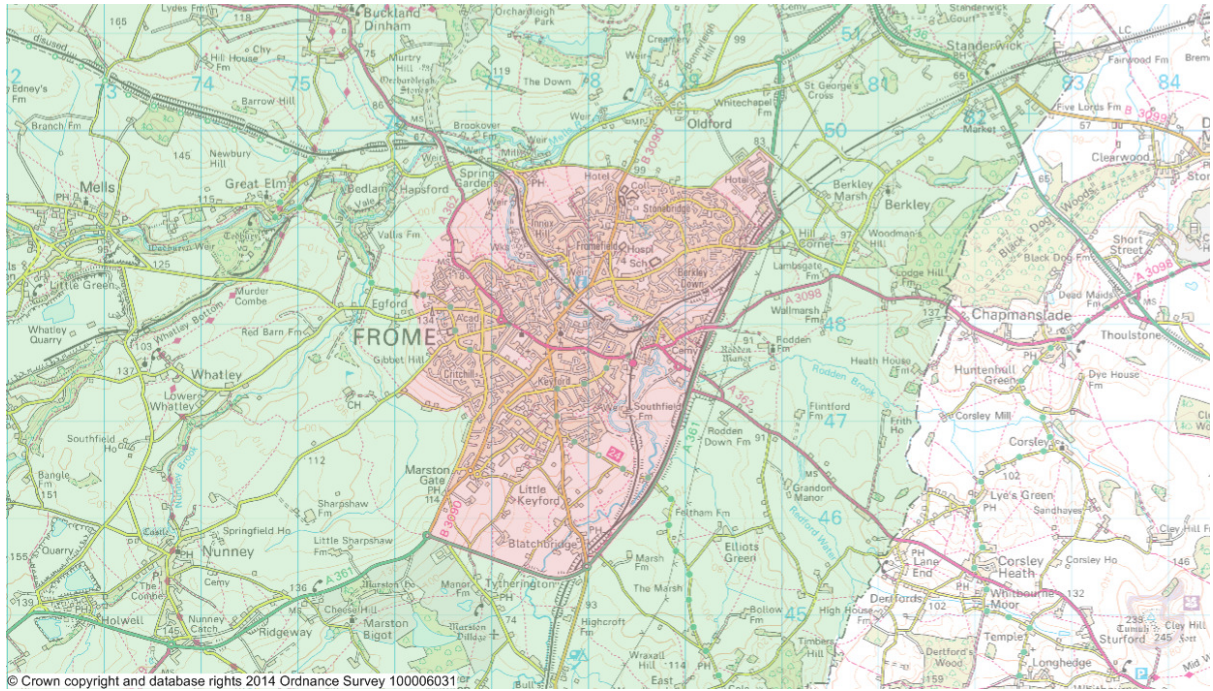
Larger-scale versions of the maps are available from the NHS England Area Team on request.

Evercreech



GREEN =CONTROLLED
PINK =NON-CONTROLLED

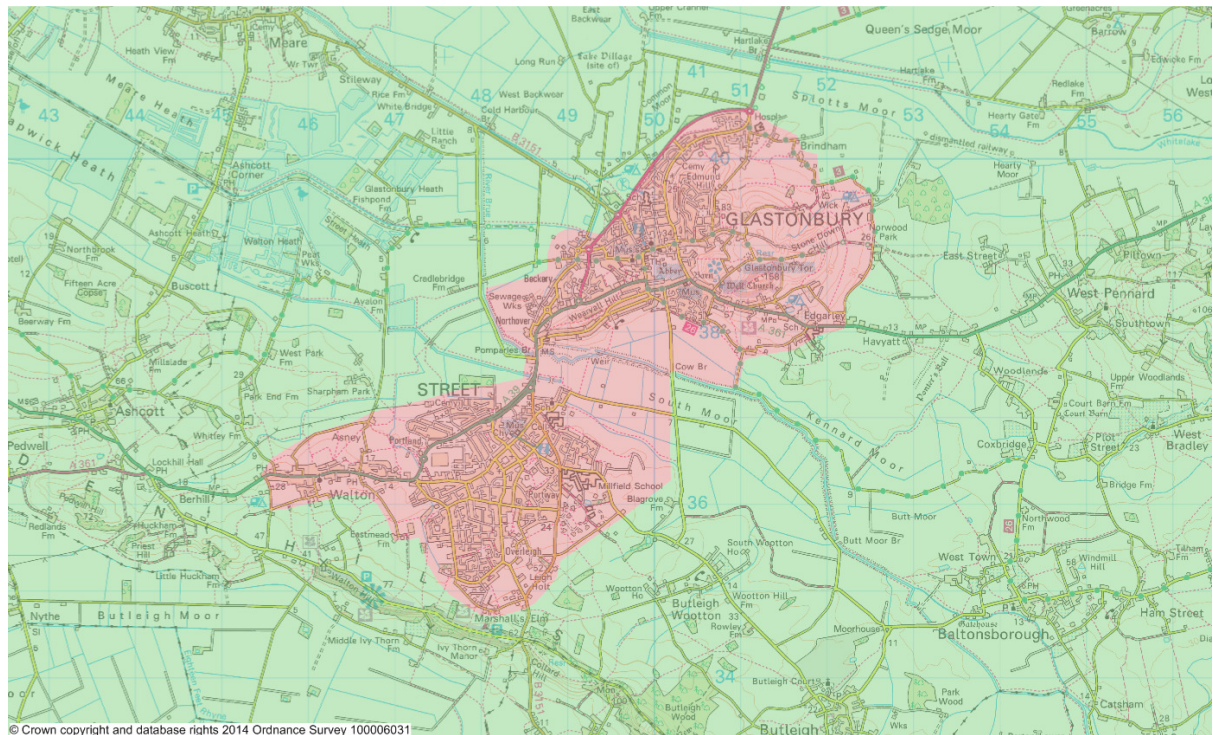
Frome



GREEN =CONTROLLED

PINK =NON-CONTROLLED

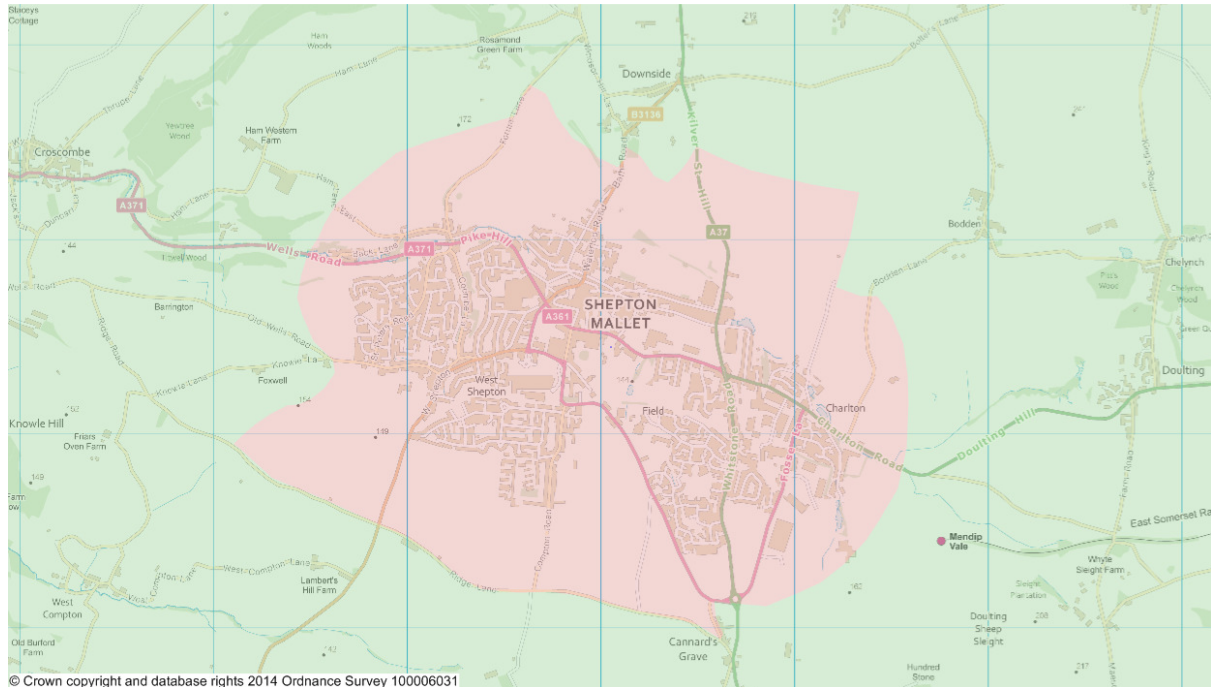
Glastonbury and Street



GREEN =CONTROLLED

PINK =NON-CONTROLLED

Shepton Mallet



GREEN = CONTROLLED

PINK = NON-CONTROLLED

Wells

