

# Somerset Health and Well-being Board

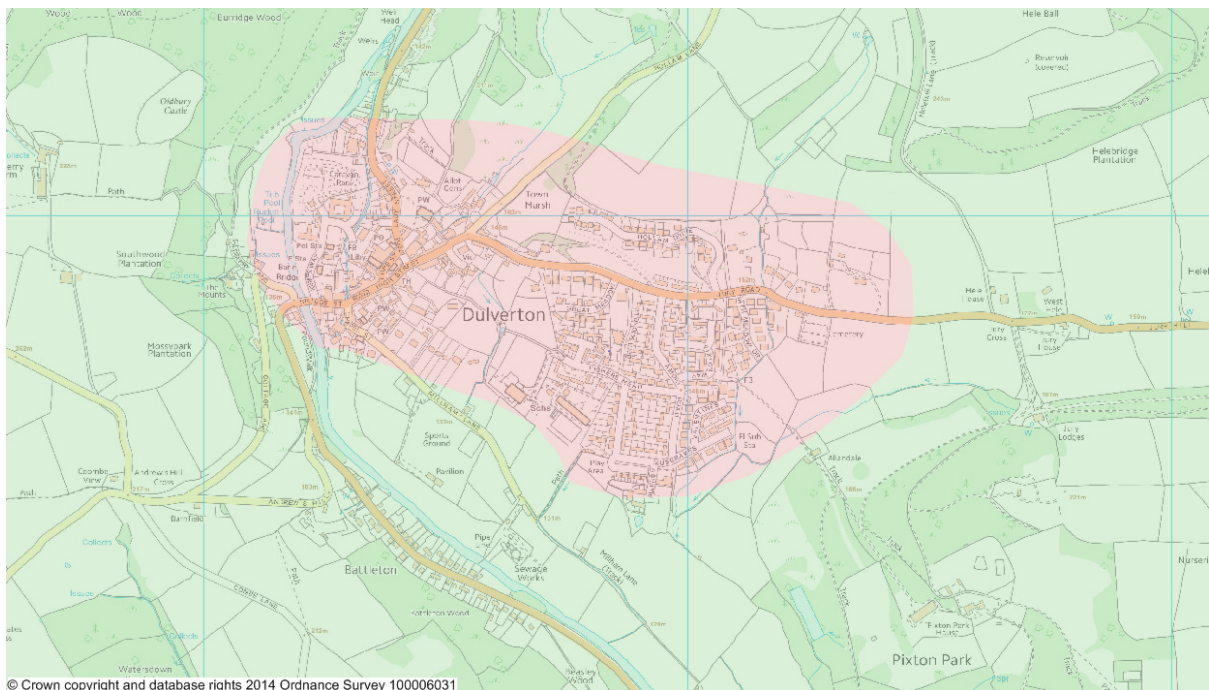
## Pharmaceutical Needs Assessment 2015

### Annexe 3 – Maps of Controlled and Non-controlled Areas (West Somerset)

The Department of Health deems that some areas are rural and therefore ‘controlled’, meaning that dispensing practices are able to provide medicines, as pharmacies may not be commercially viable. The whole of Somerset has been determined to be CONTROLLED, except those areas specifically determined to be non-controlled as shown on the maps here. Controlled areas are rural in nature and more than 1.6km from a pharmacy.

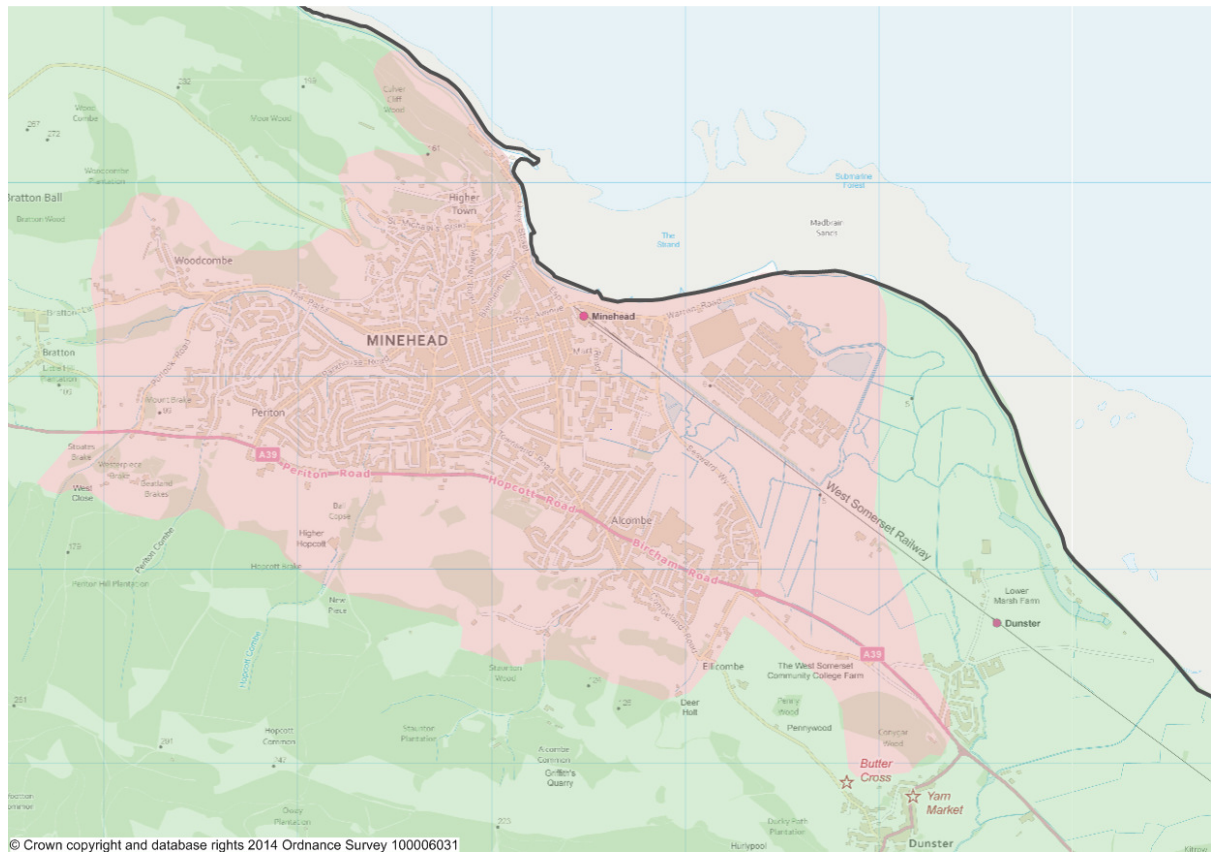
Larger-scale versions of the maps are available from the NHS England Area Team on request.

#### Dulverton



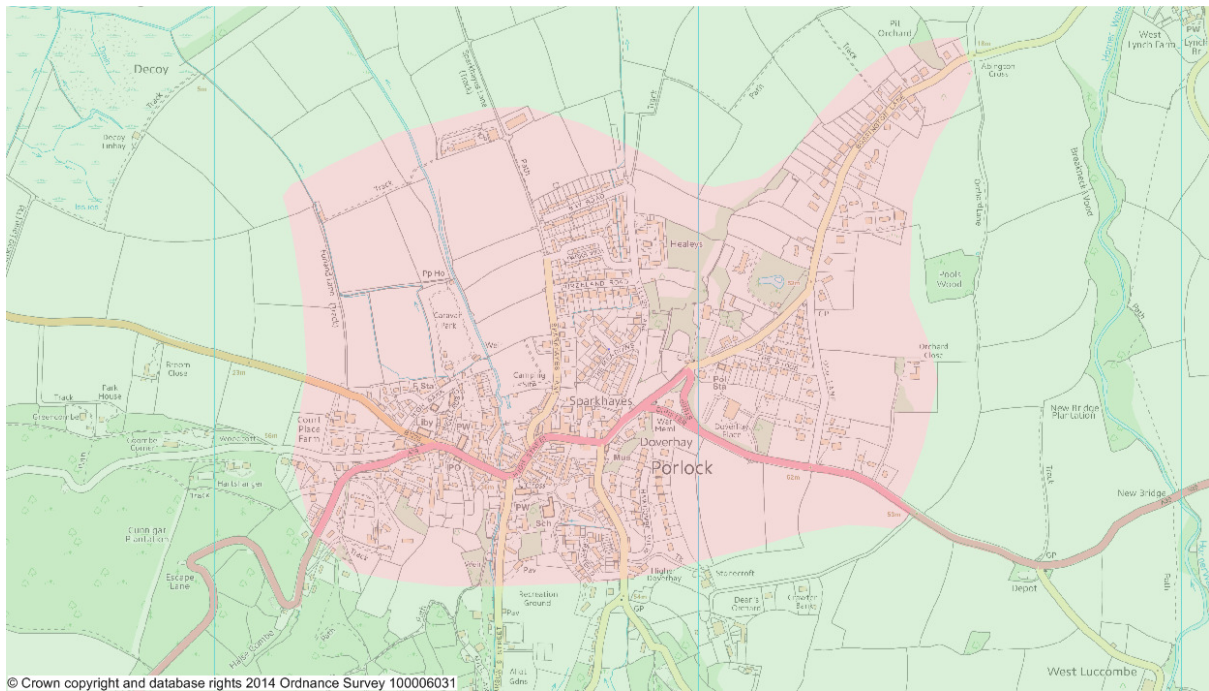
GREEN =CONTROLLED  
PINK =NON-CONTROLLED

# Minehead



GREEN =CONTROLLED  
PINK =NON-CONTROLLED

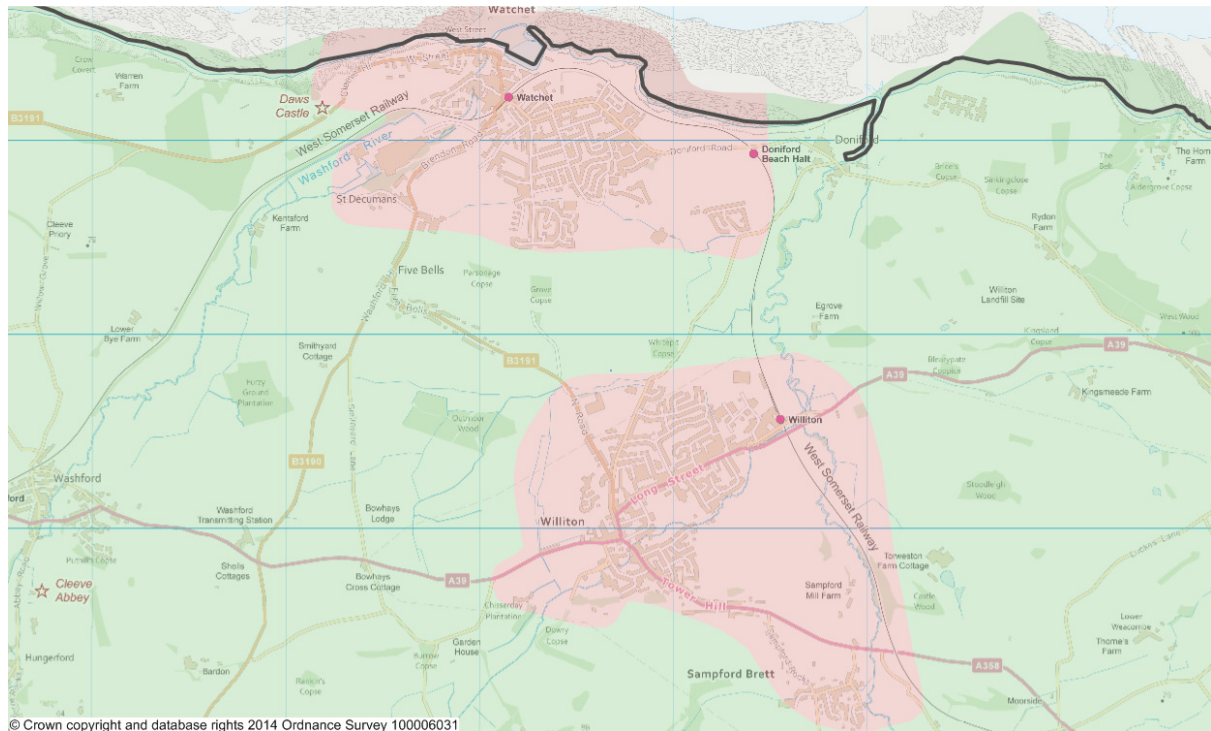
# Porlock



GREEN =CONTROLLED

PINK =NON-CONTROLLED

## Watchet and Williton



GREEN =CONTROLLED

PINK =NON-CONTROLLED