
Taunton

Profiles of the JSNA Geographies

Part of the Somerset Joint Strategic Needs
Assessment (JSNA)

Produced by Public Health at Somerset County Council, 2018



Somerset Health and Wellbeing

Background

The Health and Wellbeing Board (H&WB) asked for Joint Strategic Needs Assessment (JSNA) information to be made available at a sub-county level. The JSNA Technical Working Group (TWG) set about creating geographies that best matched the agreed criteria.

The final areas are the result of widespread consultation with stakeholders and have been approved by the H&WB. The boundaries are not considered perfect but on the basis of the criteria and after considerable consultation the JSNA TWG agreed that these boundaries are fit for purpose and as good as can practically be achieved.

For more detailed information please see the link below:

<http://democracy.somerset.gov.uk/documents/s6846/Appendix%20B%20-%20JSNA%20Proposed%20Geographies.pdf>

Purpose

The *JSNA Joint-Planning Areas* are for analysing need and supporting joint-planning of services. The data and information presented at this level will be helpful for promoting a shared understanding of need between commissioners of different services that need to work together in Somerset.

Individually commissioners are also likely to find this information useful however the actual delivery of different services may well require a different footprint. To be clear the *JSNA Joint-Planning Areas* have not been designed nor are they intended to say how services should be delivered. However, it is expected that most services will already be delivered roughly in line with the boundaries.

Scope of this tool

This tool is made available to show how different areas of the county have different characteristics and challenges. The indicators selected are not 'performance' or 'outcome' measures they are intended only to show the character and context of planning in each area. The indicators are not expected to change over a short period of time and there are no intentions to update the profile. This tool should be considered as an extra layer of the Somerset JSNA.

Summary of the geographies

There are ten *JSNA Joint-Planning Areas* and all are contained within district council boundaries. The ten areas by district are:

District council area	JSNA Joint-Planning Areas	Indicative towns
Mendip	East Mendip	Frome, Shepton Mallet
	West Mendip	Glastonbury, Street, Wells
Sedgemoor	Bridgwater	Bridgwater, North Petherton
	North Sedgemoor	Axbridge, Burnham, Cheddar, Highbridge
South Somerset	Chard	Chard, Crewkerne, Ilminster, Langport, Martock, Somerton, South Petherton
	Wincanton	Bruton, Castle Cary, Ilchester, Milborne Port, Wincanton
	Yeovil	West Coker, Yeovil
Taunton Deane	Taunton	Taunton
	Wellington	Bishop Lydeard, Wellington, Wiveliscombe
West Somerset	West Somerset	Dulverton, Dunster, Minehead, Watchet, Wilton

Feedback

To give feedback on any aspect of this profile please contact the Public Health team:

PublicHealth@somerset.gov.uk

			Comparison Method		Quintiles - highest and lowest only							
			Quartiles Key		Lowest	Below	Middle	Above	Highest			
			Average									
			Mendip		Sedgemoor		South Somerset			Taunton Deane		West Somerset
Section	Indicator	Somerset	East Mendip	West Mendip	Bridgwater	North Sedgemoor	Chard	Wincanton	Yeovil	Taunton	Wellington	West Somerset
Economic	Unemployment	1.5%	1.56%	1.59%	2.33%	1.35%	1.11%	0.84%	1.55%	1.69%	1.28%	1.23%
	Income	£26,487	£26,506	£26,747	£25,328	£27,042	£26,709	£28,031	£26,465	£26,959	£27,060	£24,377
	No qualifications	22.4%	21.4%	21.5%	25.7%	24.0%	23.0%	19.5%	21.9%	20.7%	20.2%	24.8%
Community	Single older-person (65+) households	6.5%	5.4%	6.9%	5.6%	7.2%	7.2%	6.6%	5.4%	6.5%	6.3%	9.1%
	White ethnicity	98.0%	98.1%	97.8%	98.5%	98.2%	98.6%	98.3%	97.1%	96.8%	98.2%	98.7%
	Households without cars	10.6%	9.1%	10.5%	12.6%	9.4%	8.4%	6.5%	13.3%	13.2%	8.5%	11.9%
	Long term limiting illness	18.8%	16.9%	19.1%	18.6%	21.3%	19.0%	16.9%	17.8%	18.3%	18.2%	23.8%
	Unpaid carers	3.6%	3.4%	3.5%	4.0%	4.1%	3.7%	3.0%	3.4%	3.3%	3.3%	4.3%
	Town within 15 mins (public tran./walk)	27.9%	36.0%	55.5%	17.4%	20.9%	28.4%	17.2%	24.6%	23.7%	33.5%	26.7%
	Town within 15 mins (car)	68.2%	77.7%	87.1%	63.9%	59.9%	60.1%	38.8%	90.7%	82.1%	57.0%	38.3%
Children	Strong GCSE passes	40.2%	40.8%	44.2%	33.7%	43.2%	44.6%	39.4%	35.8%	42.7%	35.5%	41.9%
	Ofsted score index	0.97	0.96	0.83	0.98	1.15	1.01	0.81	1.02	0.95	0.91	1.05
Health	Cancer prevalence	3.4%	3.1%	3.2%	3.1%	3.9%	3.9%	3.7%	2.8%	3.2%	3.6%	4.5%
	Cardiovascular disease prevalence	3.8%	3.1%	3.5%	3.7%	4.5%	4.5%	3.4%	3.3%	3.5%	3.8%	5.1%
	Mental ill-health prevalence	0.8%	0.8%	1.2%	0.7%	0.7%	0.7%	0.6%	0.9%	0.9%	0.7%	0.8%
	Dementia prevalence	1.0%	0.8%	1.0%	0.8%	1.2%	1.0%	1.0%	1.0%	0.9%	1.1%	0.9%
	Diabetes prevalence	6.8%	6.2%	6.2%	6.9%	7.6%	7.5%	6.4%	6.3%	6.4%	6.7%	7.4%
Occupation	Managers	11.0%	11.4%	12.2%	9.8%	12.9%	11.1%	12.5%	8.5%	10.0%	11.4%	12.6%
	Professional	14.8%	15.7%	16.1%	11.8%	15.0%	14.6%	14.9%	14.0%	16.9%	16.3%	11.7%
	Technical	10.9%	10.7%	10.9%	9.3%	10.6%	9.8%	14.1%	10.9%	12.6%	11.6%	8.9%
	Administrative	10.2%	9.8%	9.5%	10.6%	10.2%	9.9%	8.6%	10.9%	11.7%	10.3%	8.5%
	Skilled trades	15.0%	15.0%	15.0%	14.7%	14.0%	17.6%	17.1%	15.0%	11.5%	14.4%	18.2%
	Caring and leisure	10.7%	10.2%	9.9%	10.6%	10.7%	10.4%	9.0%	10.7%	11.5%	11.8%	12.3%
	Sales	8.1%	6.9%	9.0%	8.6%	7.6%	7.2%	6.0%	10.7%	8.8%	7.4%	7.3%
	Machine operatives	7.9%	9.0%	6.3%	10.5%	7.8%	8.7%	7.2%	8.1%	6.4%	6.8%	6.1%
	Elementary	11.5%	11.3%	11.1%	14.0%	11.2%	10.9%	10.5%	11.2%	10.7%	10.1%	14.5%
Index of Multiple Deprivation 2015 (IMD) - Ranked	IMD - Overall	Rank 1 is the most deprived area for each domain	5	4	2	8	7	10	3	6	9	1
	IMD - Income domain		7	6	1	5	8	10	3	4	9	2
	IMD - Employment domain		7	6	1	4	8	10	3	5	9	2
	IMD - Education domain	Rank 1 = highest deprivation	4	6	1	8	5	10	3	9	7	2
	IMD - Health domain		5	6	4	7	9	10	2	3	8	1
	IMD - Crime domain	Rank 10 = lowest deprivation	2	4	5	8	6	10	1	3	9	7
	IMD - Barriers domain		3	4	9	10	5	1	8	7	6	2
	IMD - Environment domain		10	6	2	7	4	3	8	9	5	1
	IDACI	Rank 10 is the least deprived area for each domain	5	9	1	6	7	10	2	4	8	3
	IDAOP1		4	7	1	3	9	10	6	5	8	2

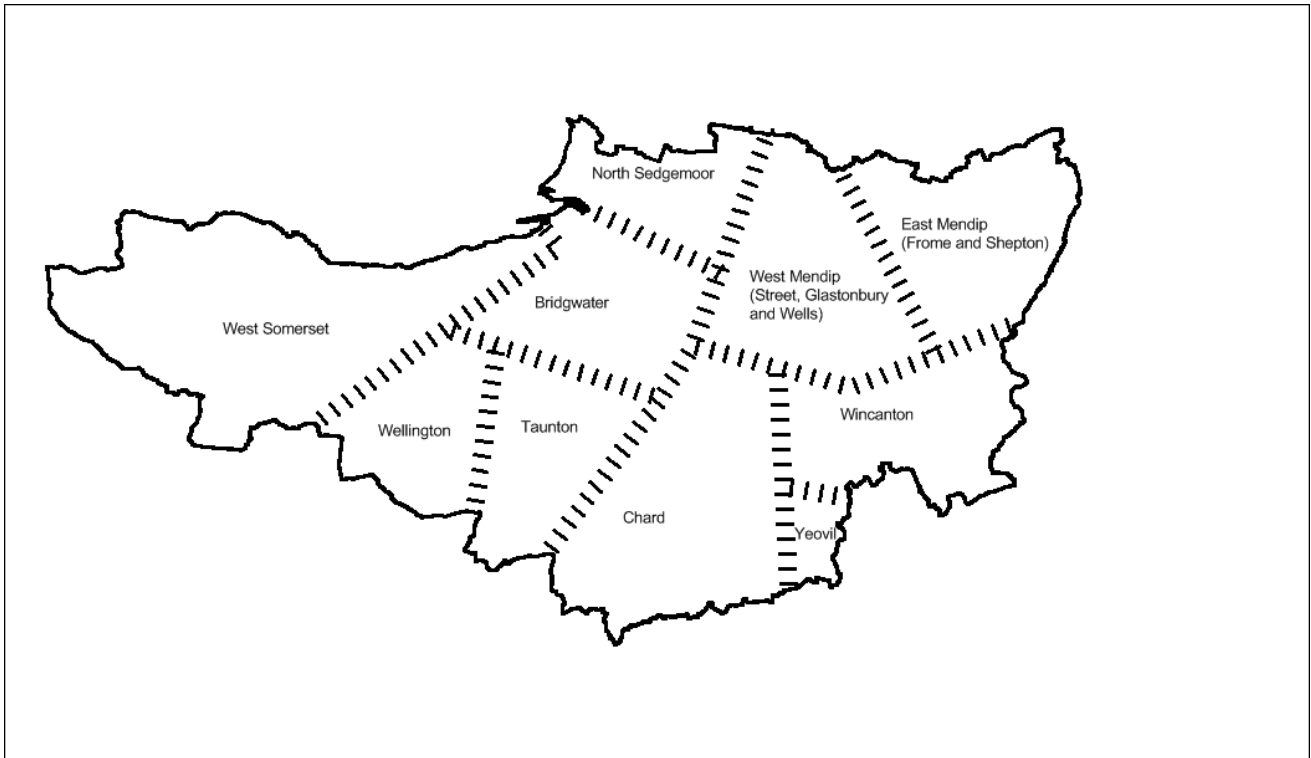
This page is designed to show how individual indicators vary for each area relative to the Somerset average or to each other (quintiles).

Each line represents the stated indicator and each column represents the stated areas, which are grouped by the district council they sit within.

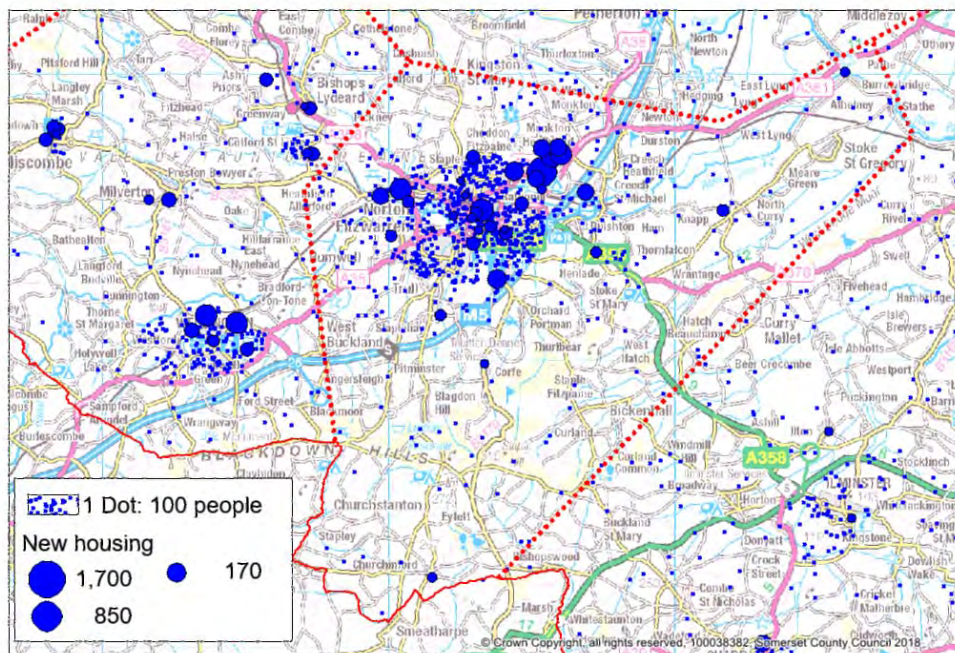
The current shading descriptions are presented in the key at the top of the page.

Taunton

1. The ten JSNA Joint-Planning Areas



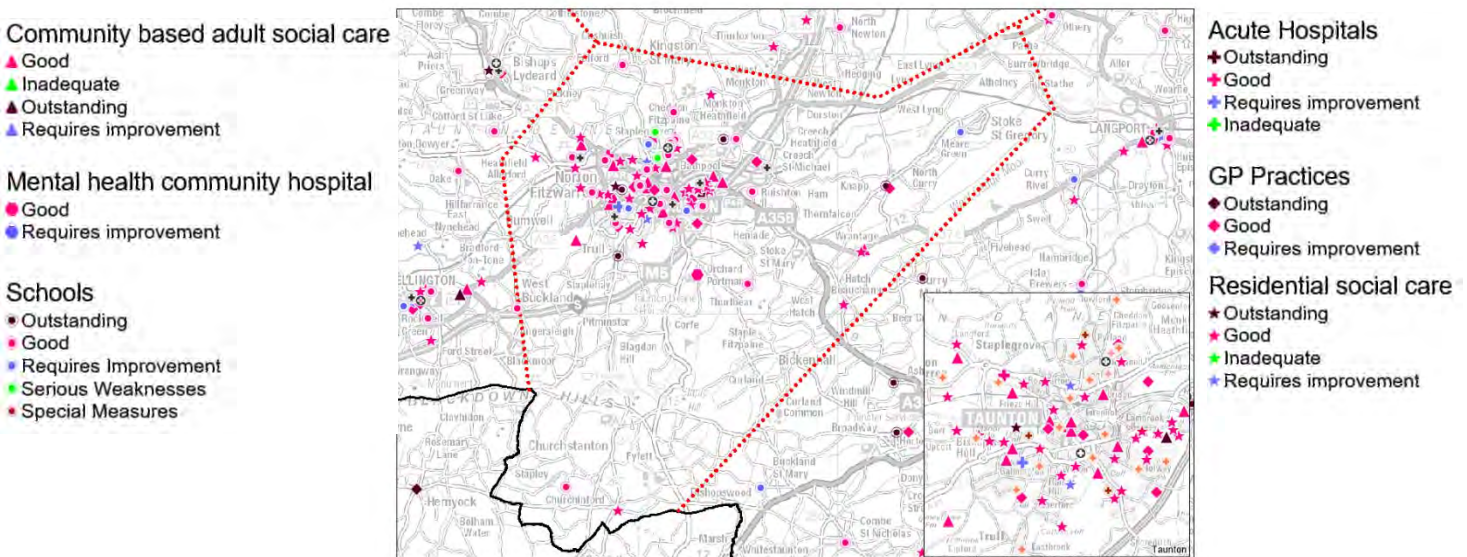
2. Population density and planned housebuilding



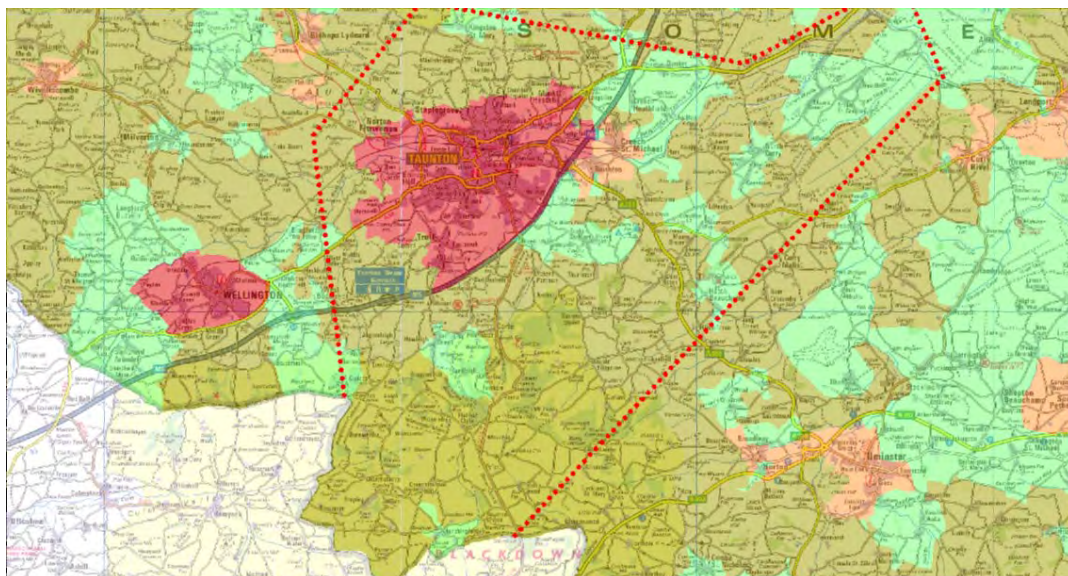
These maps are reproduced from Ordnance Survey material with the permission of Ordnance Survey on behalf of the Controller of Her Majesty's Stationary Office © Crown copyright. Unauthorised reproduction infringes Crown copyright and may lead to prosecution or civil proceedings. Licence no. 100038382 (2018)

Taunton

3. Existing Services



4. Rurality



These maps are reproduced from Ordnance Survey material with the permission of Ordnance Survey on behalf of the Controller of Her Majesty's Stationary Office © Crown copyright. Unauthorised reproduction infringes Crown copyright and may lead to prosecution or civil proceedings. Licence no. 100038382 (2018)

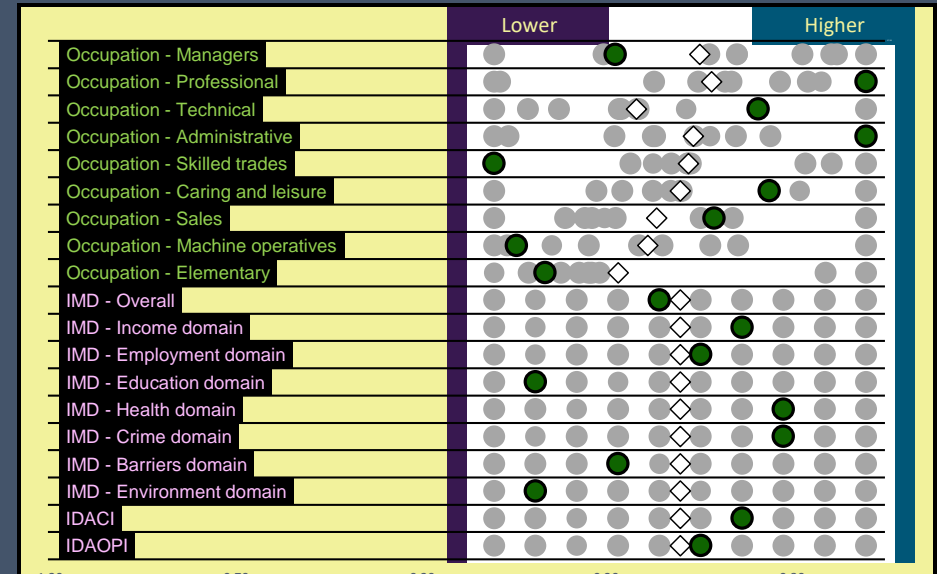
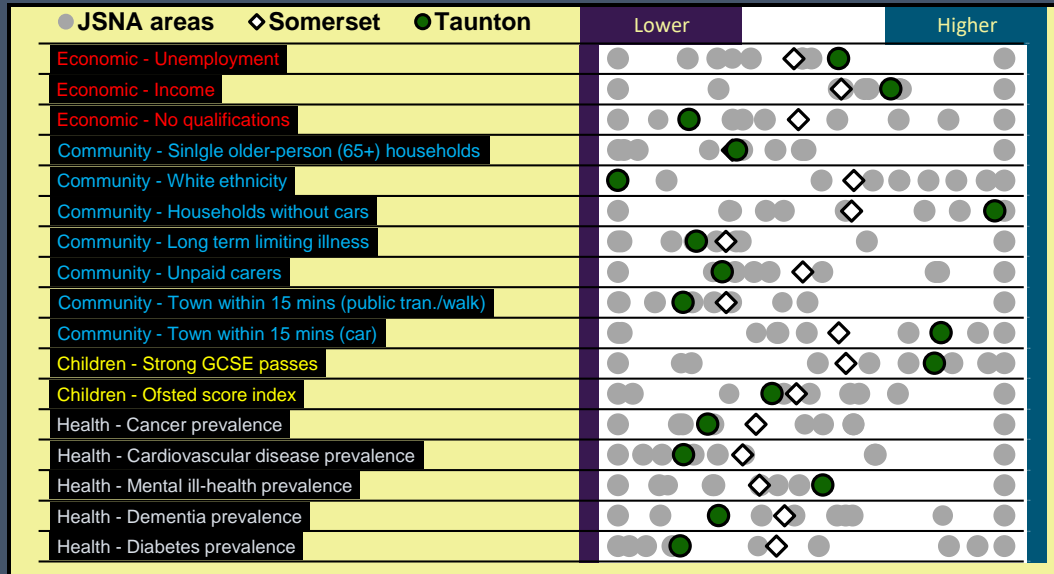
Taunton

Economic	Social	Children
Health	Occupation	Index of Multiple Deprivation

LOW			HIGH		
No qualifications	Significantly lower than Somerset	1	Unemployment	Significantly higher than Somerset and one of the highest two areas	
White ethnicity	Significantly lower than Somerset and one of the lowest two areas	2	Households without cars	Significantly higher than Somerset and one of the highest two areas	
Long term limiting illness	Significantly lower than Somerset	3	Town within 15 mins (car)	Significantly higher than Somerset	
Unpaid carers	Significantly lower than Somerset	4	Mental ill-health prevalence	Significantly higher than Somerset and one of the highest two areas	
Town within 15 mins (public tran./walk)	Significantly lower than Somerset	5	Professional	One of the highest two areas	
Cancer prevalence	Significantly lower than Somerset	6	Technical	One of the highest two areas	
Cardiovascular disease prevalence	Significantly lower than Somerset	7	Administrative	One of the highest two areas	
Diabetes prevalence	Significantly lower than Somerset	8			
Skilled trades	One of the lowest two areas	9			
IMD - Education domain	One of the lowest two areas	10			
IMD - Environment domain	One of the lowest two areas	11			
		12			
		13			
		14			
		15			
		16			
		17			
		18			
		19			
		20			

The area summary uses the information presented in the Tartan Rug. For the area selected on the Area Summary page it shows the indicators for which that area is higher or lower than Somerset or where it is in the higher and lowest quintiles.

Taunton

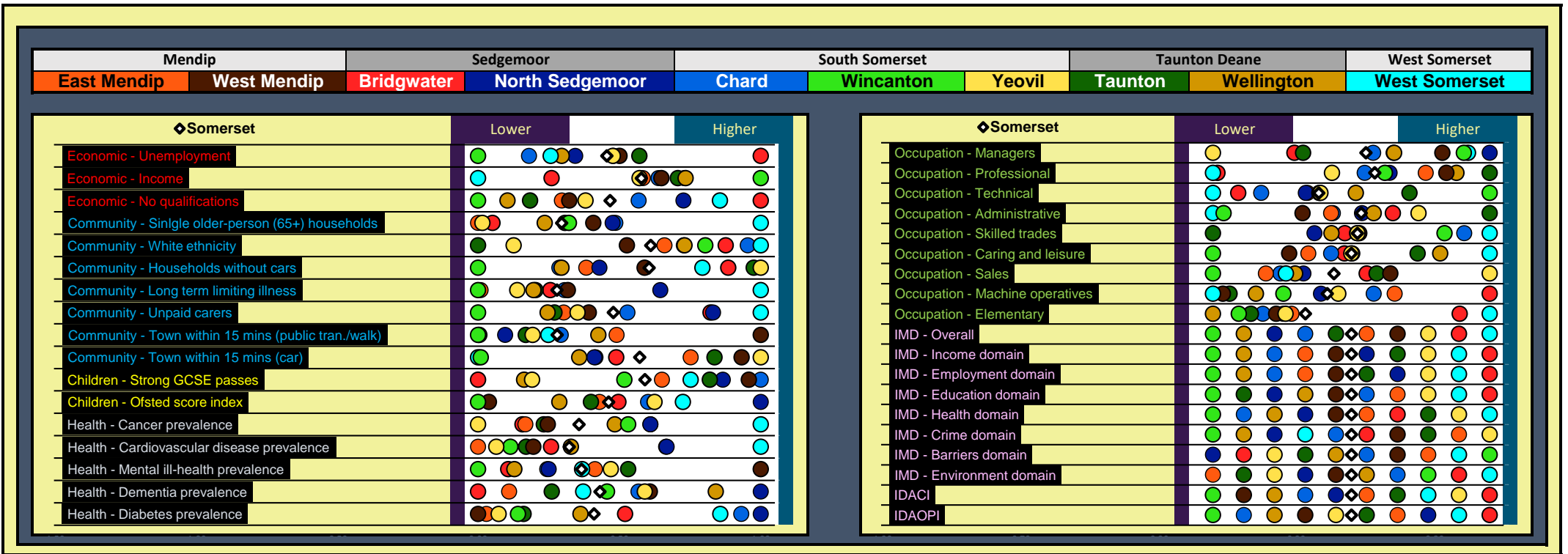


The two chart pages show the same information. However this Specific Area Chart highlights one area at a time.

Each row is a different indicator and that indicator is labelled. The value to the left represents the smallest value and the value to the right represents the highest value. Each circle represents a JSNA Joint-Planning Area.

These charts show the relative distribution they do not indicate the size of the gap between the smallest and largest value which could be very small or very large in some cases. To get the actual indicator value you will need to look at the tartan rug.

Note that the Index of Multiple Deprivation (IMD) values here are based on the rank and so appear evenly spaced because the values are 1,2,3,...10.



The two chart pages show the same information. However this All Area Chart shows all areas all at the same time

Each row is a different indicator and that indicator is labelled. The value to the left represents the smallest value and the value to the right represents the highest value. Each circle represents a JSNA Joint-Planning Area .

These charts show the relative distribution they do not indicate the size of the gap between the smallest and largest value which could be very small or very large in some cases. To get the actual indicator value you will need to look at the tartan rug.

Note that the Index of Multiple Deprivation (IMD) values here are based on the rank and so appear evenly spaced because the values are 1,2,3,...10.

Metadata

Section	Indicator	Description	Time Period	Copyright	Source	
Economic	Unemployment	Unemployment as % residents	Apr-18	ONS Crown Copyright Reserved	nomis	
	Income	Income (weighted average)	2015/16	ONS Crown Copyright Reserved	nomis	
	No qualifications	No qualifications (%)	Census 2011	ONS Crown Copyright Reserved	nomis	
Community	Single older-person (65+) households	Single older-person (65+) households	Census 2011	ONS Crown Copyright Reserved	nomis	
	White ethnicity	% of usual residents with a white ethnicity				
	Households without cars	Households without cars				
	Long term limiting illness	Long term limiting illness				
	Unpaid carers	Residents providing 20+ hours of unpaid care a week				
	Town within 15 mins (public tran./walk)	Households within 15 minutes of a town centre by walking or public transport	2016	-	Department for Transport	
	Town within 15 mins (car)	Households within 15 minutes of a town centre by car				
Children	Strong GCSE passes	Strong GCSE passes (including Maths and English)	2017	-	Somerset County Council	
	Ofsted score index	Ofsted score index - higher values indicate generally better Ofsted results for schools	2018	-	Somerset County Council	
Health	Cancer prevalence	Cancer prevalence (all ages)	2016/17	Copyright © 2017, Health and Social Care Information Centre. The Health and Social Care Information Centre is a non-departmental body created by statute, also known as NHS Digital.	NHS Digital	
	Cardiovascular disease prevalence	Cardiovascular disease prevalence (all ages)				
	Mental ill-health prevalence	Mental ill-health prevalence (all ages)				
	Dementia prevalence	Dementia prevalence (all ages)				
	Diabetes prevalence	Diabetes prevalence (17+)				
Occupation	Managers	Managers - as a proportion of usual residents in employment aged 16-74	Census 2011	ONS Crown Copyright Reserved	nomis	
	Professional	Professional - as a proportion of usual residents in employment aged 16-74				
	Technical	Technical - as a proportion of usual residents in employment aged 16-74				
	Administrative	Administrative - as a proportion of usual residents in employment aged 16-74				
	Skilled trades	Skilled trades - as a proportion of usual residents in employment aged 16-74				
	Caring and leisure	Caring and leisure - as a proportion of usual residents in employment aged 16-74				
	Sales	Sales - as a proportion of usual residents in employment aged 16-74				
	Machine operatives	Machine operatives - as a proportion of usual residents in employment aged 16-74				
	Elementary	Elementary - as a proportion of usual residents in employment aged 16-74				
Index of Multiple Deprivation (IMD) 2015	IMD - Overall	Index of Multiple Deprivation (2015) - Overall	2015	Open Government Licence version 3	English Indices of Deprivation 2015 - DCLG	
	IMD - Income domain	Index of Multiple Deprivation (2015) - Income domain				
	IMD - Employment domain	Index of Multiple Deprivation (2015) - Employment domain				
	IMD - Education domain	Index of Multiple Deprivation (2015) - Education domain				
	IMD - Health domain	Index of Multiple Deprivation (2015) - Health domain				
	IMD - Crime domain	Index of Multiple Deprivation (2015) - Crime domain				
	IMD - Barriers domain	Index of Multiple Deprivation (2015) - Barriers domain				
	IMD - Environment domain	Index of Multiple Deprivation (2015) - Environment domain				
	IDACI	Income deprivation affecting children index (IDACI)				
	IDAOPi	Income deprivation affecting older people index (IDAOPi)				